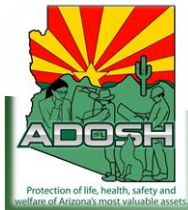
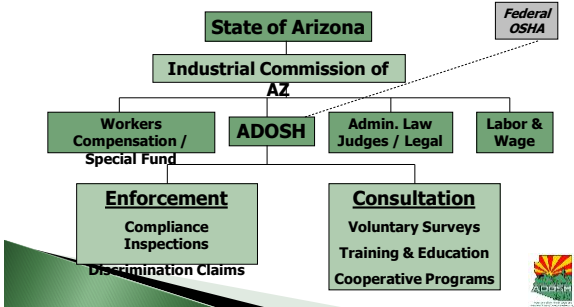


Cactus & Pine
2016 Regulatory Update Seminar
ADOSH Update



Arizona Division of Occupational
Safety and Health

ICA & ADOSH



Outreach Campaigns

Workers Memorial Day—April 28, 2015

What will you be doing on April 28th? The twenty-eighth day of April is designated as "Workers Memorial Day," in remembrance of the victims of workplace injuries and disease and in recognition of the need for strong safety and health protections in the workplace.

ADOSH will spend the day remembering Arizona's fallen workers at the Worker Memorial Day. Many events are planned for the day, and even service projects that honor those who have died while working and by serving the friends and families they left behind.



Outreach Campaigns



Outreach Campaigns cont'd...

- ▶ **Heat Stress**
 - Water
 - Rest
 - Shade
- Outreach to program has begin
 - NPR and local news stations
- Training available




Temporary Workers




Number of Inspections by Type

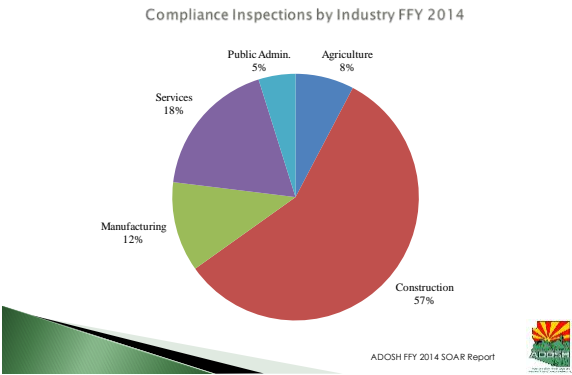
CATEGORY	First Quarter	Second Quarter	Third Quarter	Fourth Quarter	Yearly Totals	Percent
Accident	2	7	5	8	22	2.01
Complaint	57	95	77	56	285	26.08
Planned	230	87	101	206	624	57.09
Prog. Related	12	1	2	0	15	1.37
Follow-up	0	2	2	0	4	0.37
Referrals	9	11	15	8	43	3.93
Unprog. Related	13	16	40	31	100	9.15
Monitoring	0	0	0	0	0	0
Total	323	219	242	309	1093	



ADOSH FFY 2014 SOAR Report



Percent Inspections by Industry



Final Rule Standards

- ▶ Confined Space in Construction
- ▶ Cranes & Derricks in Construction –
 - Operator Certification
- ▶ Occupational Injury & Illness Recording & Reporting Requirements
- ▶ GLOBALLY HARMONIZED SYSTEM



EFFECTIVE GHS OSHA rule

- **Federal Effective Completion Dates:**
- **December 1, 2013:** Employers must train employees on the new label elements and SDS format.
- **June 1, 2015*** Chemical manufacturers, importers, distributors and employers must comply with all modified provisions of this final rule.
- Distributors may ship products labeled by manufacturers under the old system until **December 1, 2015**.
- * This date coincides with the European Union implementation date for classification of mixtures.
- **June 1, 2016:** Employer's Must update alternative workplace labeling and hazard communication program as necessary, and provide additional employee training for newly identified physical or health hazards.
- Transition Period Must Comply with either 29 CFR 1910.1200 (the final standard), or the current standard, or both for all chemical manufacturers, importers, distributors and employers.



GHS - LABELS

- Nine Symbols
- Includes "Environment"

 • Oxidizers	 • Flammables • Pyrophorics • Self-Heating • Emits Flammable Gas • Self Reactives • Organic Peroxides	 • Explosives • Self Reactives • Organic Peroxides
 • Acute toxicity (severe)	 • Corrosives	 • Gases under pressure
 • Carcinogen • Mutagenicity • Reproductive Toxicity • Respiratory Sensitizer • Target Organ Toxicity • Aspiration Toxicity	 • Aquatic Toxicity	 • Irritant • Skin Sensitizer • Acute Toxicity (harmful) • Narcotic effects • Respiratory Tract Irritation • Hazardous to Ozone Layer



GHS - Label example

ToxiFlam (Contains: XYZ)

Danger! Toxic if Swallowed, Flammable Liquid and Vapor

Do not eat, drink or use tobacco when using this product. Wash hands thoroughly after handling. Keep container tightly closed. Keep away from heat/sparks/open flame. No smoking. Wear protective gloves and eye/face protection. Ground container and receiving equipment. Use explosion-proof electrical equipment. Take precautionary measures against static discharge. Use only non-sparking tools. Store in cool/well-ventilated place.

IF SWALLOWED: Immediately call a POISON CONTROL CENTER or doctor/physician. Rinse mouth. In case of fire, use water fog, dry chemical, CO₂, or "alcohol" foam.

See Material Safety Data Sheet for further details regarding safe use of this product

MyCompany, MyStreet, MyTown, NJ 00000, Tel: 444 999 9999



CONSULTATION

- ▶ In addition to compliance activities, the Federal Government requires that State Plans manage a “Consultation, Education and Training” Program
- ▶ It is the Key to Success!



Consultation Assistance

- Provided at no cost
- Delivered by ADOSH Consultation and Training Section
- No penalties are proposed or citations issued
- Possible violations of ADOSH standards are not reported to ADOSH enforcement staff unless employer fails to eliminate or control any serious hazard or imminent danger



Consultation, Education and Training are:



Free Services to employers seeking assistance in complying with the health and safety standards. Employers can learn:

- The requirements of the rules
- Interpretation of the rules
- Application of the rules to control the hazards



CONSULTATION/COMPLIANCE
RELATIONSHIP

- ▶ Consultation cannot be conducted on a site if:
 - Compliance officer is on site
 - Citations have been/will be issued
 - No "Final Order"



CONSULTATION/COMPLIANCE
RELATIONSHIP

- Consultation visit takes precedence over inspections except:
 - Imminent danger
 - Fatality/Catastrophe
 - Formal complaint

◆ Visit is confidential



CONSULTATION SURVEYS

- ▶ Full service
- ▶ Limited service
- ▶ Records Review



All Consultation Activity

INDUSTRY	First Quarter	Second Quarter	Third Quarter	Fourth Quarter	Yearly Totals	Percent of Total	Yearly Goal	Percent of Yearly Goal
Agriculture	0	1	0	4	5	1.75	28	17.86
Construction	37	27	25	35	124	43.51	118	105.08
Manufacturing	23	13	16	14	66	23.16	65	101.54
Services	27	17	16	23	83	29.12	65	127.69
Public Admin.	2	2	1	2	7	2.46	13	53.85
	89	60	58	78	285		289	98.62



Consultation Training

OVERALL TRAINING STATISTICS	First Quarter	Second Quarter	Third Quarter	Fourth Quarter	Yearly Totals
Training Courses/Speeches Presented	72	74	73	72	291
Employer Participants Trained	436	782	618	604	2440
Employer Participant - Hours	1170	1504	1155	1662	5491
Employee Participants Trained	1495	638	616	923	3672
Employee Participant - Hours	2214	2080	1681	2000	7975
Hours of training conducted	138	231	174	160	703
Average mgnt per class	6.06	10.57	8.47	8.39	8.37
Average employees per class	20.76	8.62	8.44	12.82	12.66
Average class length (hours)	1.92	3.12	2.38	2.22	2.41



ADOSH Partnership Programs

VPP

SHARP

RRAP

PEPP



ADOSH VPP & C-VPP Happenings

- ▶ Currently there are 39 sites
- ▶ New additions to the program
 - LOVEN CONTRACTING, INC.
 - Kitchell Contractors, Inc.
 - McCarthy Building Companies



Safety and Health Achievement Recognition Program (SHARP)

- ▶ **SHARP**
 - 29 Current Sites
 - General Industry setting
 - 250 employees and less to qualify
 - Injury/Illness rates less than national BLS listing for their industry
 - **L & H (RAPP)**

NEW: Mobile Workforce SHARP Program – Under Draft, General Contractors and may have areas for subcontractors



Partnership Programs

- ▶ **Rate Reduction Awareness Program**
 - RRAP – Currently 5 companies in program
 - We look for companies with an average above the current BLS listing for their industry
- ▶ **Public Entities Partnership Program (P.E.P.P.)**
 - PEPP – Final program is COMPLETE
 - City of Yuma
 - For all Public Entities -High Hazard Areas Only
 - Wastewater
 - Streets
 - Maintenance Shop
 - Shooting Range
 - PD/FD



ADOSH Safety Summit

Thank you to the Town of Marana for making our April 13-14, 2016 Safety Summit successful!

- Next Safety Summit
 - Flagstaff
 - Phoenix



ADOSH Advocate Quarterly

- Quarterly printed
- What is happening at our office
- Fatal Mistakes
- VPP/SHARP Members
- Schedule of Training
 - Throughout AZ

