



---

---

---

---

---

---

---

Overview of Presentation





ARIZONA DEPT. OF AGRICULTURE'S (ADA)  
CURRENT REGULATIONS FOR TRAINING



ADA'S PESTICIDE SAFETY TRAIN-THE-  
TRAINER WORKSHOP PROGRAM



NEW WPS REGULATIONS THAT WILL IMPACT  
TRAINERS AND TRAINING PROGRAMS



ADA'S INFORMATION FOR AZ TRAINERS

---

---

---

---

---

---

---



---

---

---

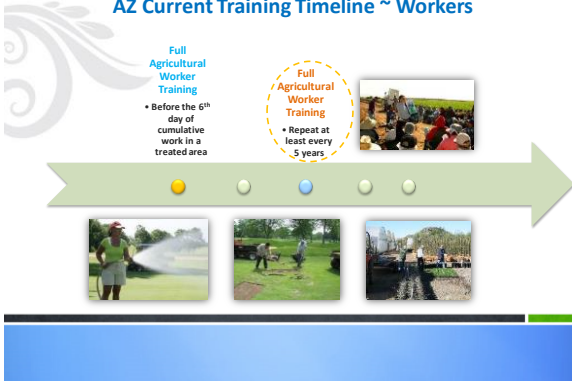
---

---

---

---

### Worker Protection Standard (WPS) AZ Current Training Timeline ~ Workers



---

---

---

---

---

---

---

---

### Worker Protection Standard (WPS) AZ Current Training Timeline



---

---

---

---

---

---

---

---



---

---

---

---

---

---

---

---



### TRAINING VERIFICATION CARDS ARE REQUIRED IN ARIZONA



This is in state law. —





**TRAINERS MUST ALSO HOLD A  
CURRENT ARIZONA TRAINER  
CERTIFICATION**



This is in state law. 

**Overview of Presentation**



ARIZONA DEPT. OF AGRICULTURE'S (ADA)  
CURRENT REGULATIONS FOR TRAINING



ADA'S PESTICIDE SAFETY TRAIN-THE-  
TRAINER WORKSHOP PROGRAM



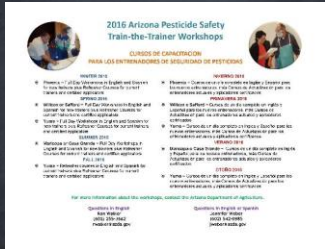
NEW WPS REGULATIONS THAT WILL IMPACT  
TRAINERS AND TRAINING PROGRAMS



ADA'S INFORMATION FOR AZ TRAINERS

**ADA Pesticide Safety Trainer  
Workshops**

- ✦ Arizona Pesticide Safety Trainers only
- ✦ We don't certify attendees to provide training on tribal land
- ✦ Provide Worker Protection Standard (WPS) training to agricultural workers and pesticide handlers
- ✦ Workshop, handouts, and trainer certification are FREE
- ✦ PPT presentations, activities and exam.
- ✦ Continuing Education Units NOT required, however trainers need to renew every 3 years (attend workshop w/exam.)



## Two Types of Workshops



Train-the-Trainer Workshops for New Trainers and People with Expired Certificates

Refresher Courses for Current Trainers, Certified Applicators and PCAs

---

---

---

---

---

---

---

## Train-the-Trainer Workshops for New Attendees and Trainers with Expired Certificates



- 6-hour workshop, plus exam
- English and Spanish workshops
- Sessions on PPE, WPS, Safe Handling, Recordkeeping, Training Techniques, Pesticide Labels, and Health Issues
- Practice presentations in small groups
- Trainer Exam
- Training resources

---

---

---

---

---

---

---

## Refresher Courses for Current Trainers, Certified Applicators and PCAs

- 3-hour Course (Spanish and English, back-to-back)
- Includes trainer exam
- Updates on new regulations, research and resources
- Trainers will have opportunity to share their experiences
- Presentation practice or demonstration – will try a new format each time to keep it fresh



---

---

---

---

---

---

---

Currently  
~ 645 ~  
Certified  
Trainers  
in Arizona



---

---

---

---

---

---

---

---

47 Certified Trainers

31 Golf and Country Clubs

20 Invited ADA to Present On-Site Training

---

---

---

---

---

---

---

---

Overview of Presentation

 ARIZONA DEPT. OF AGRICULTURE'S (ADA) CURRENT REGULATIONS FOR TRAINING

 ADA'S PESTICIDE SAFETY TRAIN-THE-TRAINER WORKSHOP PROGRAM

 NEW WPS REGULATIONS THAT WILL IMPACT TRAINERS AND TRAINING PROGRAMS

 ADA'S INFORMATION FOR AZ TRAINERS

---

---

---

---

---

---

---

---

New WPS:

The 5 day grace period  
will be eliminated.

Everyone must be  
trained before entering a  
treated area.

Treated Area:

REI has been in effect in  
the previous 30 days.



---

---

---

---

---

---

---

---

NEW FEDERAL ~ WHEN TO TRAIN

- Workers – **Complete** training before entry into a treated area

Same as current

**Handlers** – **Complete** training before performing  
any handling task  
**Early entry workers** – **Before** any early-entry task



---

---

---

---

---

---

---

---

NEW FEDERAL REQUIREMENT  
HANDLER & WORKER TRAINING

Employers must make sure that workers and handlers  
receive Pesticide Safety Training

**Agricultural Workers:**  
**EVERY YEAR**

**Pesticide Handlers:**  
**EVERY YEAR**



---

---

---

---

---

---

---

---

# Future Federal WPS Training Topics ~ January 2018

**Agricultural Worker Training**

- Currently 11 Items
- Expanded to 23 Items
- Examples of new topics:
  - Expanded training on risks of taking home pesticides, pesticide residues
  - Reporting violations
  - General background on SDS
  - Early Entry situations and restrictions

**Pesticide Handler Training**

- Currently 13 Items
- Expanded to 36 Items
- Examples of new topics:
  - Respirator fit and use training
  - Employers' responsibilities re: PPE
  - Minimum age
  - Suspending applications
  - Recognize, Prevent and Treat Heat Illness

Special Note: Training materials are being developed now.



---

---

---

---

---

---

---

---

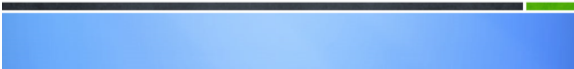
## Two Styles of EPA Training Verification Cards Currently Accepted in Arizona and Other States



Old version



New version



---

---

---

---

---

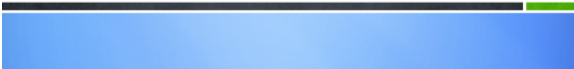
---

---

---

## New Federal WPS Regulation

**Eliminate Training Verification  
Cards**



---

---

---

---

---

---

---

---





**ADA will Mooove forward on the New WPS**

- Including new information in our 2016 Train-the-Trainer Workshops.
- Changed trainer exam questions to reflect changes.  
"Effective January 2017."
- Will notify currently certified trainers and ask them to sign an agreement that they read the changes.
- Other presentations, handouts for expos, meetings, collaborations with others groups, etc.



---

---

---

---

---

---

---


---

**TRAINING VERIFICATION CARDS IN ARIZONA**



**CARDS ARE HERE TO STAY ~ AZ State Law**

**Trainers**



- Accountability
- Renewal Dates
- Name & card number
- Training location
- Reports
- Ordering new cards

**Employers**



- Accountability
- Documents for inspections
- Renewal Dates
- Names and card numbers

**Employees**



- Proof of training
- Renewal Date
- Worker card valid throughout U.S.
- Handler card valid throughout AZ

**AZ Dept. of Ag**



- Accountability
- Data - number of trainers and ag employees trained in state
- Card re-orders
- Tracking cards in case of theft

---

---

---

---

---

---

---

---



**SIDE NOTE: Some growers hire employees on a daily basis.**

**They like the cards because they can immediately tell who has received safety information and can begin work immediately.**

**SPECIAL NOTE FOR ARIZONA TRAINERS:**  
We will continue to use EPA blue and green cards until our inventory disappears. We will switch to an ADA-approved training verification card as soon as they are needed.

---

---

---

---

---

---

---

---

**VERY IMPORTANT BUT SOMEWHAT CONFUSING**

All new and "renewed" Arizona trainers are being instructed to write the training expiration date as January 2, 2018 for training that they provide in 2016. ADA inspectors will advise during 2017 site visits.



---

---

---

---

---

---

---

---

---

---



**New Federal WPS**

Train-the-Trainer Workshop Programs must be submitted to U.S. EPA for approval.  
ADA will submit a program for review.



**NOTE: Arizona State Law.**  
ADA is the only approved  
Train-the-Trainer Workshop  
provider in the state.

---

---

---

---

---

---

---

---

---

---



---

---

---

---

---

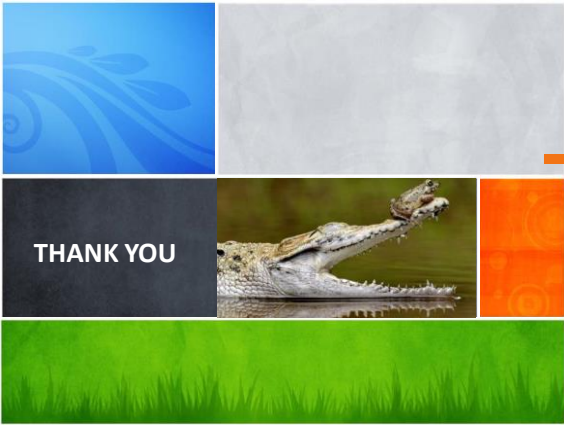
---

---

---

---

---



---

---

---

---

---

---

---