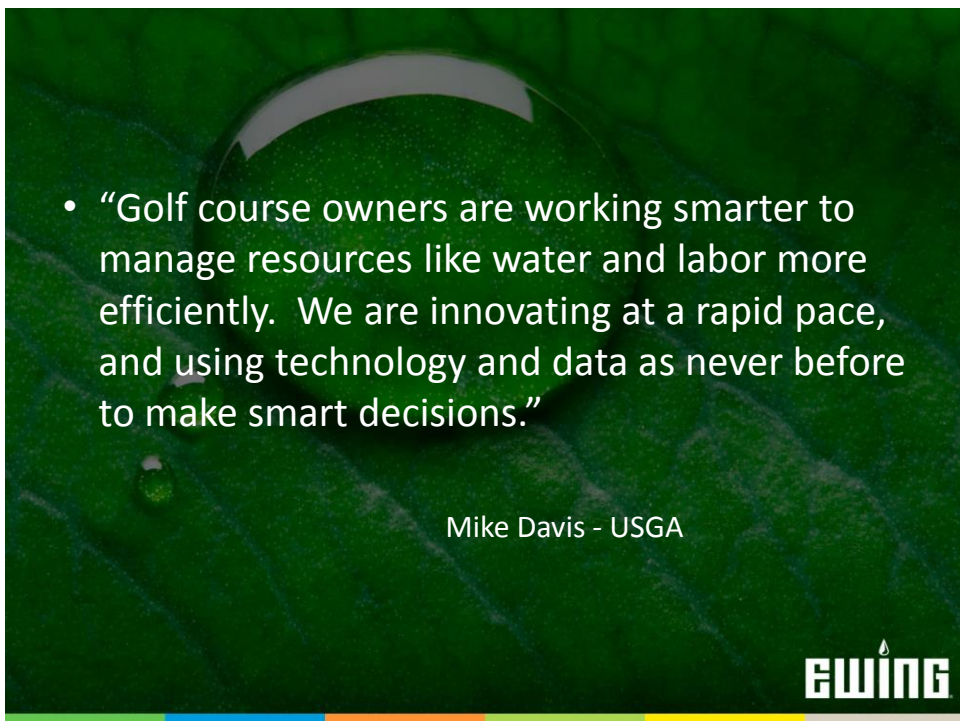





2018 Water Summit

Brian Hurley
National Golf Sales Manager



- “Golf course owners are working smarter to manage resources like water and labor more efficiently. We are innovating at a rapid pace, and using technology and data as never before to make smart decisions.”

Mike Davis - USGA



Landscape Contractors

Interiorscape Contractors

Irrigation Consultants

Landscape Architects

Golf Course Superintendents

Growers & Nurseries

Sports Turf Managers

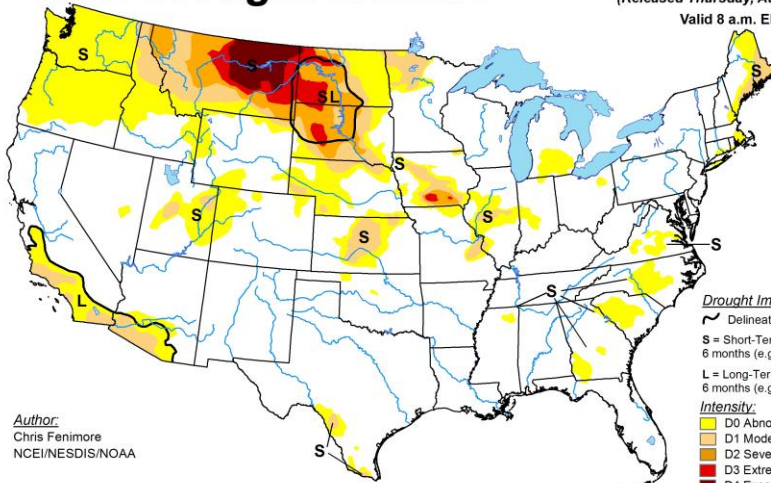
Manufacturers & Distributors

Urban Agriculture

WE ARE THE ORIGINAL GREEN INDUSTRY

U.S. Drought Monitor

August 29, 2017
(Released Thursday, Aug. 31, 2017)
Valid 8 a.m. EDT



Author:
Chris Fenimore
NCEI/NESDIS/NOAA

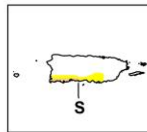
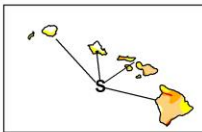
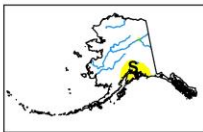
Drought Impact Types:

- Delineates dominant impacts
- S = Short-Term, typically less than 6 months (e.g. agriculture, grasslands)
- L = Long-Term, typically greater than 6 months (e.g. hydrology, ecology)

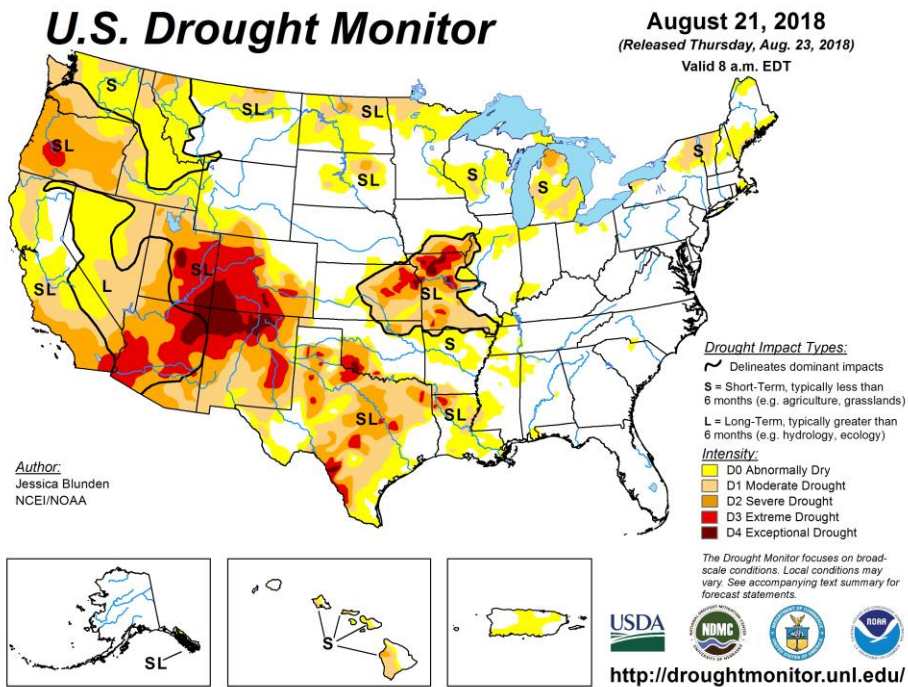
Intensity:

- D0 Abnormally Dry
- D1 Moderate Drought
- D2 Severe Drought
- D3 Extreme Drought
- D4 Exceptional Drought

The Drought Monitor focuses on broad-scale conditions. Local conditions may vary. See accompanying text summary for forecast statements.



<http://droughtmonitor.unl.edu/>



Irrigation Innovations -2018

- System Components
 - Allied (Pipe, wire, fittings)
 - Sprinklers
 - Central Components
 - Flow Management
 - Sensors
 - Inputs
 - Future Integrations
- Misc Items

EWING

Allied Systems

HDPE roughly 50% of all irrigation system
-15% more \$\$\$

New trend – Hybrid systems
-PVC Mainline/HDPE laterals

HDPE Issues? What do we know?



Sprinklers





Irrigation Audits



More precise application of water

This section features a dark green background with a large magnifying glass graphic. Inside the magnifying glass, there is a photograph of a black irrigation riser pipe with a pressure gauge and a flow meter attached. To the right of the magnifying glass is a photograph of a person in a red shirt and grey pants using a hose to apply water to a golf course green. Below the magnifying glass is a photograph of a golf course green with multiple sprinkler heads. In the bottom right corner of this section is the "EWING" logo with a small flame icon above the letter 'I'.

Central Control - Components

Precise control of water

- True integration with water source
- Real Time feedback of water usage



Sensors & Inputs

More information becoming available

- ET (more site specific options)
- Moisture Sensors
- Salinity



Future Integrations.....

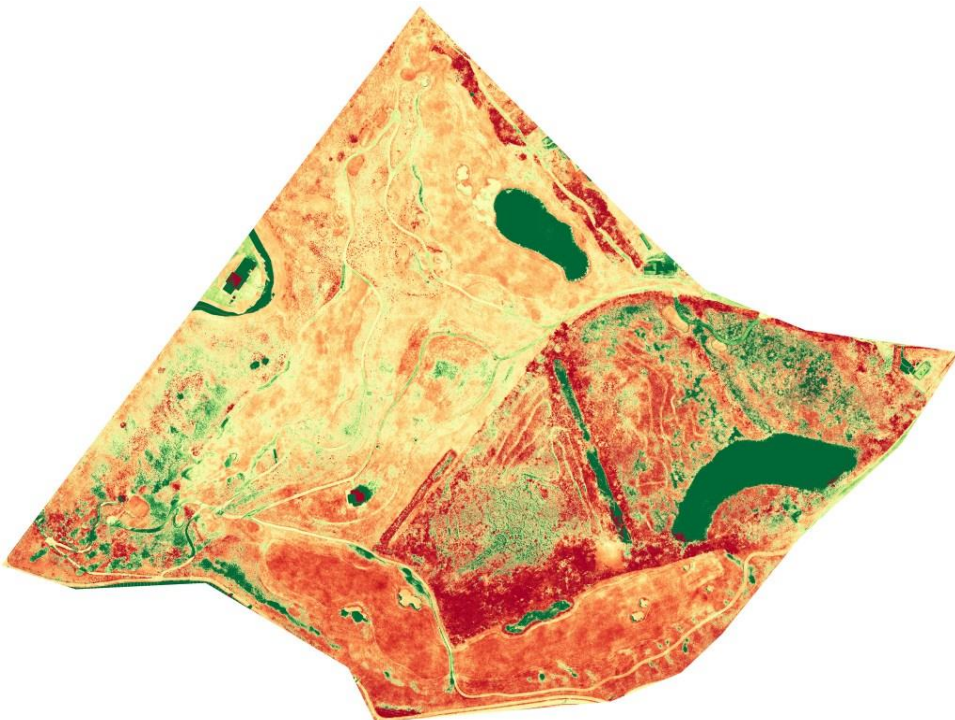
Drone technology

3rd party Moisture/salinity/moisture canopy integration

Whats next?



EWING



Clear Water

Recycled wash down system
70,000 gallons per facility
Uses micro-organisms to treat water

