



The Club That Fits Your Lifestyle

Manhattan Country Club is more than a private golf club, it is the ultimate family experience. Every aspect of the Club has been designed with this in mind. Manhattan Country Club is a place where families and friends create memories that last a lifetime.

- 18 Hole Championship Golf Course
- Practice Facilities
 - Driving Range
 - Putting Green
 - 36,000 Square Foot Short Game Practice Area
- Swimming Pool
- 3 Distinct Dining Experiences
- Year Round Family and Social Events
- Special Events for Friends and Family

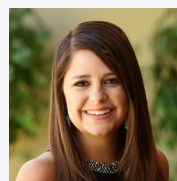
“Discover Manhattan Country Club” —— Preview Membership Initiative ——

Preview and Discover

The “Discover Manhattan Country Club” Preview Membership Initiative makes it easy for you to try out all of the benefits and live the fulfilling lifestyle you will enjoy as a member of Manhattan Country Club.

Membership at Manhattan Country Club is within your reach and we look forward to allowing you to discover all that we have to offer.

If you have any questions regarding the enclosed information or to set up a private tour of our club facilities, please contact Christina Hodges, Membership Marketing Director, and she will be happy to assist you.

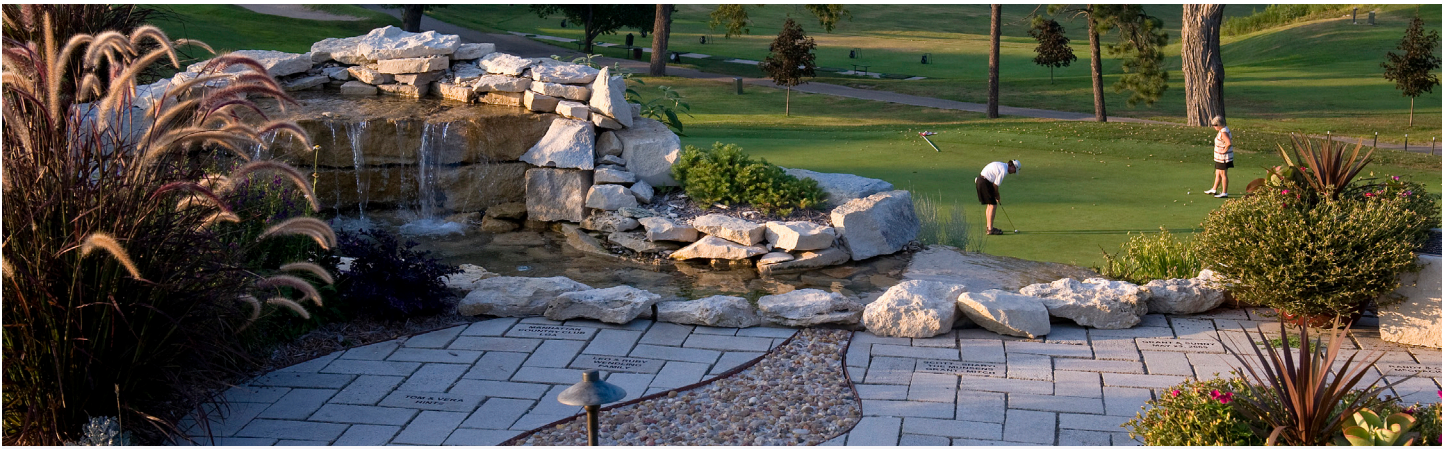


Christina Hodges

Membership Marketing Director

Phone: (785) 539-7801

Email: christina@themanhattancountryclub.com



Membership Opportunities & Privileges

Golf Memberships

Membership provides full access to all of the club's facilities and amenities to include unlimited golf privileges to the championship 18-hole golf course, pool, fitness, dining, clubhouse, banquet facilities and all social related events and activities. Privileges will be extended to the member, member's spouse and dependent children as prescribed by the club.

Regular Golf

Entrance Fee: ~~\$2,000~~

Preferred Entrance Fee: \$1,250

Monthly Dues & Fees

Family Membership: \$357

Individual Membership (1 golfer only): \$283

Single Membership (unmarried): \$237

*This is a voting membership and includes a \$25 stock certificate.

Young Professional

Entrance Fee: ~~\$1,000~~

Preferred Entrance Fee: \$850

Monthly Dues & Fees

Family Membership: \$241

Individual Membership (1 golfer only): \$214

Single Membership (unmarried): \$185

*Available to applicants ages 40 & under.

Non-Resident

Entrance Fee: ~~\$500~~

Preferred Entrance Fee: \$300

Monthly Dues & Fees: \$218

*Available to applicants living 25 or more miles away from the club.

Social Membership

Membership provides access to all of the club's facilities and amenities to include pool, fitness, dining, clubhouse, banquet facilities and all social related events and activities. Privileges will be extended to the member, member's spouse and dependent children as prescribed by the club.

Entrance Fee: ~~\$500~~

Preferred Entrance Fee: \$300

Monthly Membership Dues: \$159

Dining Membership

Membership provides access to the club's facilities and amenities to include dining, clubhouse, banquet facilities and all social related events and activities. Privileges will be extended to the member, member's spouse and dependent children as prescribed by the club.

Entrance Fee: ~~\$300~~

Preferred Entrance Fee: \$200

Monthly Membership Dues: \$73

Preferred Entrance Fees applicable if paid within 60 days