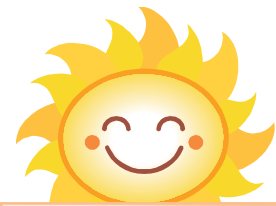


Happy Father's Day
June 15th

June 2025
Lee's Hill Newsflash
10200 Old Dominion Pkwy
Fredericksburg, VA 22408
(540) 891-0111 –Phone
(540) 891-5258 ---Fax
www.leeshillgc.com



Summer Begins
June 20th

Flag Tournament



To be held on Friday, July 4th. 7 am Tee Times.
Greens, Cart, Flag for Cart, contest and prizes.
Regular fees and Entry fee.
Sign up in the pro shop or

at the sign up podium.

Driving Range ***update

The Driving Range will close every **Wednesday at 4:00 pm** for maintenance and clean up. The Range will reopen on Thursday morning.

Lees' Hill Wednesday Ladies League

The Ladies League is set up so that ladies of all abilities (beginners included). Interested? Please call 540-891-0111.

PGA Jr. League

As we conclude our Spring season during the first week of July, we begin to look forward to our Fall PGA Jr. league season. Lee's Hill is signed up again as a participant for the upcoming fall season. Please register at pgajrleague.com. Call Jamie at 540-379-8802 for information about the PGA Jr. Fall league. (Sept-Oct).



Now Available!

On Line Pre Registration Jr. Golf Camp



It's time to sign up for Jr. Golf Camp! This year, for your convenience, we have

On Line Pre Registration!

Visit our website and right from the home page you can pre-register your child. The camp dates, form and information www.leeshillgc.com July 8-12 & July 22-26

2-Player Ransom Results: Sat, May 10, 2025

Flight "A:"- 1st Place (66)

Todd Pickering, Pete Seftas

Flight "A"- 2nd Place (68)

Daryl Perdue, Landon Perdue

Flight "A"- 3rd Place (71)

Steve Corbin, Ronnie Quayle

Flight "B"- 1st Place (76)

Jim Leahy, Larry Rupert

Flight "B"- 2nd Place (78)

Butch Boutchyard, David Clements

Flight "B"- 3rd Place (82)

Kevin Joens, Jonathan Haught

CTP#5- Steve Corbin 6'7"

CTP#7- Todd Pickering 13'6"

CTP#14- Jim Leahy 5'7"

CTP#17- Chuck Barber 4'11"

Spring Glowball 2025 Results will be in the next Newsletter



Spark Golf

Spark is a 9 Hole social golf league organized to be casual and fun, with a touch of friendly competition. You can sign up to play at www.spark.golf

Driving Range & "Tee on Back of Driving Range"

The "back tee" on the driving range is for

Lessons Only.

This is not open to any golfers for play or practice. Golf carts are also prohibited from this area



Club Championship – October this year!

The Club Championship is scheduled for October 11th & 12th this year. Sign up is in the foyer at the podium. Tee Times. Golf, Cart, Prizes, Entry Fee. There are Four (4) Coveted Parking Spots up for grabs

Donation Bin for Animal Shelters & Rescues

Let's not forget our furry little friends. One can at a time. Towels, blankets, pet supplies, food dry or canned & newspaper. All will be given to rescue shelters in the area.

Member Guest Flyer:

Member Guest this year will be on **September 13-15** With a practice round and social on September 13th Sponsor forms are available on line, in the foyer or for the asking. Remember any member that gets \$600 in sponsorships, will get their entry fee for them and their guest waived. If you have any questions about Member Guest, call Jamie or Cindi in the clubhouse. We are only a few months away!

90 Degree Cart Rule: Important (please read)

At this time of the year, it is extremely important to enter the fairways at 90 degrees to the ball from the path in order to help not wear out the turf at the beginning of each fairway once leaving the tee box. Your help and attention to this matter is most appreciated

Tee Times

When a tee time is made a slot is filled, this means no one can have that space. So for "no shows" or too many blocks this can be hurtful to the course and others that want to play. Whether it's to increase or decrease or to cancel, updates are appreciated by all.



No Fishing!

Lee's Hill, accepts no liability to those that get injured while fishing on the golf course



****Take Care****

**Fix ball marks, 90 degrees, Trash in cans
Pick up used Tees**

Turf Talk – June 2024

First impressions. You know what they say, you only get one chance to make a first impression. Coming off Old Dominion Parkway the first thing you see is the front entrance. How's the landscaping? Does it welcome you? The next thing is the parking lot. It certainly is a good sign when you see that it is full. As you drive in are there any open spots between the faded and nearly invisible parking lanes? Oh no, I don't want to park next to that pothole! I will just park on the grass, no matter the available spaces. Outside of the Clubhouse the next sign of proof of the condition on the course are the Putting Green and or the Driving Range. First question, is there grass on the green or the tee? Is it maintained? Is there management of the turf? Ok sorry, I regress down into that old rabbit hole. I shouldn't get upset over the things I can't control, like the weather.



Last year, thinking along the lines of first impressions, my focus was obviously the golf course and improving the conditions for play. Grass was soon to follow after introducing improved management of the turf growing conditions and maintenance practices required for such improvement. Looking back, I recall not opening the Driving Range tee until the first week or so in May. This year I opened the range a little later. Opening was due to the ability of the grass to recover from the beatdown it gets and knowing that the grass can fill those voids of divots and subsequent topdressing. Well here we are, on the cusps of June and the grass is still not growing and recovering from the increased activity of the Range.

The night-time temps have not reach and maintain the required temperatures, 65 degrees. So, to protect our tee, we may have to close it down for a day or maybe two during the week, to decrease the amount of wear until the grass starts to grow, otherwise we will be hitting off sand. But then we do have mats!

Dan Hurley, GCS

Joggers, Walkers & Site Seers!!

The golf season is here and we are all excited. With it comes all the beauty that is a golf course! While we do appreciate our many joggers, walkers, dog walkers and site seer, we ask that they would use the community paths instead of the golf course cart paths