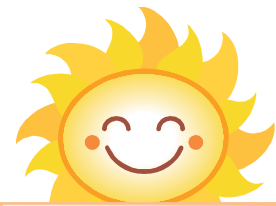


Happy Father's Day
June 14th

June 2026
Lee's Hill Newsflash
10200 Old Dominion Pkwy
Fredericksburg, VA 22408
(540) 891-0111 –Phone
(540) 891-5258 ---Fax
www.leeshillgc.com



Summer Begins
June 20th

Flag Tournament



To be held on Saturday,
July 4th. 7 am Tee Times.
Greens, Cart, Flag for
Cart, contest and prizes.
Regular fees and Entry fee.
Sign up in the pro shop or

at the sign up podium.

Driving Range ***update

The Driving Range will close every **Wednesday at 5:00 pm** for maintenance and clean up. The Range will reopen on Thursday morning.

Lees' Hill Wednesday Ladies League

The Ladies League is set up so that ladies of all abilities (beginners included). Interested? Please call 540-891-0111.

PGA Jr. League

As we conclude our Spring season during the first week of July, we begin to look forward to our Fall PGA Jr. league season. Lee's Hill is signed up again as a participant for the upcoming fall season. Please register at pgajrleague.com. Call Jamie at 540-379-8802 for information about the PGA Jr. Fall league. (Sept-Oct).



Now Available!

On Line Pre Registration Jr. Golf Camp



It's time to sign up for Jr. Golf Camp! This year, for your convenience, we have

On Line Pre Registration!

Visit our website and right from the home page you can pre-register your child. The camp dates, form and information www.leeshillgc.com July 6-10 & July 20-24

Spring Glowball 2026 Results will be in the next Newsletter



Spark Golf

Spark is a 9 Hole social golf league organized to be casual and fun, with a touch of friendly competition. You can sign up to play at www.spark.golf

Driving Range & "Tee on Back of Driving Range"

The "back tee" on the driving range is for

Lessons Only.

This is not open to any golfers for play or practice. Golf carts are also prohibited from this area

Joggers, Walkers & Site Seers!!

The golf season is here and we are all excited. With it comes all the beauty that is a golf course! While we do appreciate our many joggers, walkers, dog walkers and site seer, we ask that they would use the community paths instead of the golf course cart paths

Member Guest Flyer:

Member Guest this year will be on **September 11-13** With a practice round and social on September 11th Sponsor forms are available on line, in the foyer or for the asking. Remember any member that gets \$600 in sponsorships, will get their entry fee for them and their guest waived. If you have any questions about Member Guest, call Jamie or Cindi in the clubhouse. We are only a few months away!



Jr. Golf Camp Thank You!

A special Thank you to Dave Duke and Brett Lively for their donation to the Jr. Golf Camp of Jr. Golf Clubs and Golf Balls. If anyone has any Jr. Golf Clubs or Golf Balls for the Jr. Golf Camps to donate, please contact Jamie.

Club Championship – October this year!

The Club Championship is scheduled for October 10th & 11th this year. Sign up is in the foyer at the podium. Tee Times. Golf, Cart, Prizes, Entry Fee. There are Four (4) Coveted Parking Spots up for grabs

Donation Bin for Animal Shelters & Rescues

Let's not forget our furry little friends. One can at a time. Towels, blankets, pet supplies, food dry or canned & newspaper. All will be given to rescue shelters in the area.

90 Degree Cart Rule: Important (please read)

At this time of the year, it is extremely important to enter the fairways at 90 degrees to the ball from the path in order to help not wear out the turf at the beginning of each fairway once leaving the tee box. Your help and attention to this matter is most appreciated

Tee Times

When a tee time is made a slot is filled, this means no one can have that space. So for "no shows" or too many blocks this can be hurtful to the course and others that want to play. Whether it's to increase or decrease or to cancel, updates are appreciated by all.

No Fishing!



Lee's Hill, accepts no liability to those that get injured while fishing on the golf course

Turf Talk – June 2026

The challenges of maintaining golf courses in the Mid-Atlantic keeps Golf Course Superintendents and their staff at wits end. With our current drought and temperatures enjoying their ride on the rollercoaster, the bermudagrass doesn't know what to do. Just from a definition standpoint it's been near impossible to establish the collar edge to the fairway and fairway edge to the rough. What a free-for-all for all the golfers out there: just roll the ball to the nearest poa clump and swing away. And who hasn't enjoyed the extra distance your getting from the hardening fairways. In summary, great for the golfers but not the same for all turf managers.



Turf Talk Continued.....

The challenge has always been to create the best health and growth to be able to withstand the next season that approaches. In other words, what we do today will affect the turf in six months. The immediate concern or question is will the bermudagrass stand be mature enough to allow us to prepare for the winter months of dormancy. Currently the bermudagrass has greened up but it hasn't started creeping or spreading through rhizomes and stolons.

We are watering as best we can but we are unable to keep up with the current drought conditions. When the grass finally begins to grow, there is little time left to develop any mat or thatch for winter insulation. The turf is thin and vulnerable to winter temperatures and potential desiccation or even winterkill. It seems to be a direct connection to the conditions we've experienced since I've been here but also from the last 20-30 years. I've been told that the depth of both ponds at 10 and 12 was at one time, 25 feet or so. The edge of the ponds or littoral shelf extends to the depth of four feet from a specific elevation and then drops to the depth of 25 feet. Of course, after years of existence and the sedimentation that has accumulated who knows what the current depths are; anyone want to donate a jon boat? The volume of water we have for irrigation is not as much a concern as the ability to deliver it. We've been able to get the greens irrigation running at near 100% but not 100% automated.

The tees and fairways aren't even close. We do the best we can but need more help from Mother Nature if we continue at this rate. There's no doubt we are the 'Avis' of golf course maintenance crews as we try harder! Please enjoy your round and the extra roll! Also please fill your divots and repair you ball marks. See you on the course.

Dan Hurley, GCS



****Take Care****
Fix ball marks, 90 degrees, Trash in cans
Pick up used Tees