

Central Park



Tennis Club

February news & updates

Upcoming Events

1st-5th: BC/CP Tournament Cont.

5th-9th: Lost & Found Clean Out

7th: Lunar New Year Pickleball

12th: CUP Fundraiser

28th: Mix Up Friday - Tennis & Dinner

[2025 Event Calendar](#)

Read Manager, President, Committee and Pro Articles:

[Click Here to Read](#)

Welcome New Members!

Leann & Mark LeMaster
Lokesh Joshi and family
Lorraine Wong & Peter Lee
Kirsten Kam (Junior)
Nirbhay Agarwal (Junior)

Best to our Resigning Members!

Leslie & Bob Haeger
Mindy Park
Jason Hutto
Caden Seuk (Junior)
Austin Zhang (Junior)

YOUR January STATEMENT IS NOW AVAILABLE!

January charges / February dues

You can now view your statement online

Follow these easy steps to access:

- Log in to www.centralparktennisclub.com
- Go to [Members Only](#) to Log in
- Select Member Statement tab
- You may now pay online with a credit card - transaction fees do apply and will be billed on your following month's statement. Checks and ACH are still accepted.
- *Waitlist members do not have online access*

[View your statement today!](#)

February Committee Meetings:



10th: CUP 1pm & Tennis 6:00pm

11th: Facilities 4:30pm

12th: Membership 5:30pm

20th: Finance 5:00pm

26th: Board 6:00pm

Winter Weather

As we are headed into the heart of the winter weather season, please keep in mind and be prepared for adjusted hours/closures at the club. Management will make these decisions based on the safety of our members, staff and guests. When the decision is made, and email will be sent and Gametime will be updated in the dashboard. It's important that you monitor your email and Gametime if we have inclement weather.

NEW CLINICS!

Tuesday:
3.5/4.0 with Mark 7:00-8:00pm

Saturday:
4.0 with Jeff and 4.5+ with Nick 9:00-10:00am

Sunday:
2.5/3.0 Skills & Drills with Phil 3:30-5:00pm

Sign up in Gametime!

LOST & FOUND CLEAN OUT

FEB. 5TH-9TH
IN THE BOARD ROOM

Items not claimed during this period will be donated.



**Are you interested in teaching
a fitness class?**

Yoga? Zumba? Kickboxing?

Contact **Chad**

**Membership Committee is
still looking for volunteers to
help with events.**

Volunteer Form

**USTA Teams Looking
for Players:**

Men's 3.5 65+
contact gamagev@hotmail.com

Women's 5.0 18+
contact stewart_joanna@hotmail.com



Racquet Stringing

Ready to get your racquets serviced?

Simply bring your racquets to the front desk and fill out the form on the iPad.



Winter Session
January 6th - February 23rd

Late Winter Session
Registration opens
February 10th at 1pm

[View all Sessions Here](#)

The CUP fundraiser on
Wednesday February 12th

benefits

Nick of Time Foundation

The CUP Committee is excited to host a Social + Fundraiser this year on **Wednesday, February 12th**. All CUP players are invited to play tennis, enjoy lunch and participate in a live raffle. We are also happy to bring back the all-club silent auction during the week preceding the event where ALL club members will be able to bid and out-bid each other for some amazing gift baskets. This year we hope to fundraise \$5,000.

Donation matching from Harry's Hounds Foundation-Supporting a loving and forever home for all animals. Consider adoption.



Nick of Time
FOUNDATION

www.nickoftimefoundation.org





REGISTRATION NOW OPEN

**CP ADULT WOMEN MEMBERS ONLY
SIGN UP WITH A PARTNER
FLEXIBLE SCHEDULING; MID-MARCH THRU BEG OF MAY
SEPARATE DIVISIONS BY LEVEL (2.5 – 4.5)**

**ARE YOU READY TO FLEX?
SCAN THE QR CODE TO LEARN MORE AND SIGN UP!**



bitly

LUNAR NEW YEAR PICKLEBALL & DINNER

FRIDAY, FEB 7TH

**PICKLEBALL 5-7PM
FOLLOWED BY A
CATERED DINNER
FROM FACING EAST**

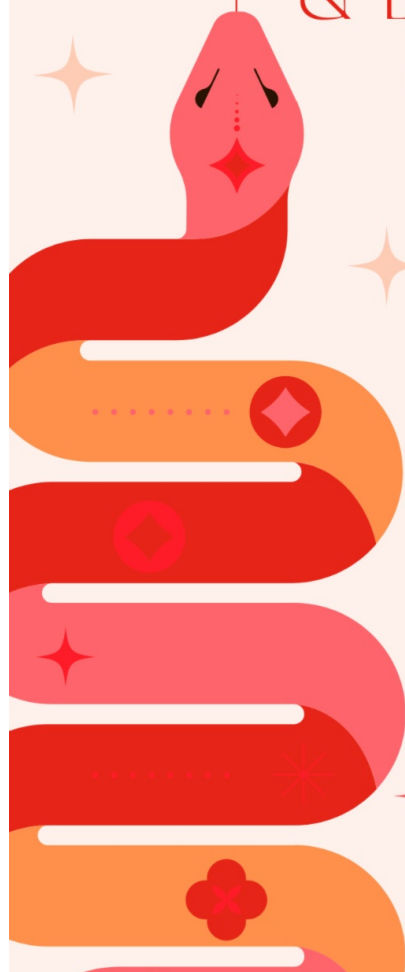
\$25 PER PERSON

**ADULT MEMBERS ONLY
(18 AND UNDER CAN SIGN UP
FEB 3RD IF SPACE ALLOWS)**

**10 INDOOR PICKLEBALL
COURTS, INCLUDING A
DESIGNATED PRO LED
BEGINNER COURT**

**ALL SKILL LEVELS ARE
WELCOME!**

**REGISTRATION
NOW OPEN!**



TENNIS 5:30-7PM & DINNER 7-8:30PM

MIX UP FRIDAY

**FEB
28TH**



**REGISTRATION
OPENS
FEB 14TH**

UPCOMING DATES:

3/28, 4/25, 5/30, 6/27, 8/22, 9/26, 10/31, 11/21

Central Park Tennis Club | Central Park Tennis Club 5820 125th Lane NE | Kirkland, WA 98033 US

[Unsubscribe](#) | [Update Profile](#) | [Constant Contact Data Notice](#)