

Fairways & Waterways

A Social Publication for the Residents of Waterlefe • September 2016

Frank & Donna

Volunteers, Friends | **Your Neighbors**

UPSCALE RESALE SHOP

Community Haven

*Quality Home Decor & Furnishings for every room in your home.
Come see our Unique treasures and eclectic finds.*

Fresh Baked Goods available and special orders taken.

Donations needed and gladly accepted. • Will pick up

100% of proceeds help the Developmentally Disabled in Sarasota and Manatee Counties and beyond.

For more information please call Julie Audet 941 685-8224
www.communityhaven.org

Hours Tues - Thurs 10 to 4 • Wed Fri Sat 10 to 2 • 4405 DeSoto Road -Sarasota - 34235

PROBLEM SOLVED.

\$100 off any repair over \$300
AND **Zero Service Charge**
with any repair, 24/7/365



**MODERN
AIR**
& REFRIGERATION

941-727-0330
www.ModernAirNow.com

**Specializing in Clean
Indoor Comfort for over 15 years.**

Bow to Stern

for All of Your Boating Needs

BOAT REPAIR SHOP | MOBILE MARINE SERVICE

941-773-7602

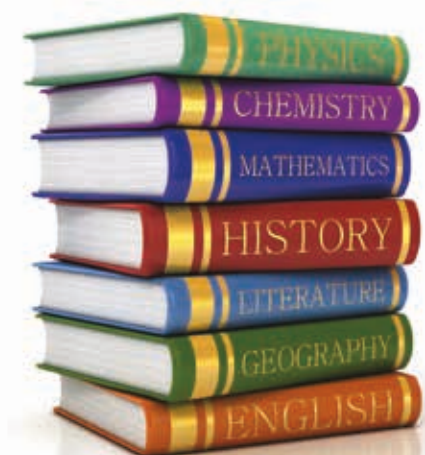
2904 29TH AVE E UNIT A, BRADENTON FL 34208




WWW.BOWTOSTERNSERVICE.COM | BOWTOSTERNSERVICES@LIVE.COM

IMPORTANT INFORMATION

- 911 FIRE, AMBULANCE, POLICE**
Manatee County Utilities Dept.
- 941-792-8811** Water, Sewer, Trash
- 941-917-0708** Florida Power
- 855-222-0102** Cable, Telephone, TV (Brighthouse)
- 877-832-6747** TECO
- 941-782-2100** Lakewood Ranch Medical Center
- 800-222-1222** National Poison Control Center
- 941-747-3011** Manatee County Sheriff -non emergency
- 941-749-1800** County Clerk
- 941-748-8208** Property Tax
- 941-758-3537** US Postal Service
- SCHOOLS**
- 941-708-4990** Freedom Elementary
- 941-714-7240** Haile Middle School
- 941-751-8230** Braden River High School
- 941-727-6100** Lakewood Ranch High School
- 941-708-8770** Manatee County School District
- WATERLEFE**
- 941-744-9881** River Club
- 941-747-6898** MPOA Property Management / Finance
- 941-744-9771** Golf Club
- 941-744-0393** Tee Times
- 941-708-6866** Gatehouse



DISCLAIMER: N2 PUBLISHING IS NOT AFFILIATED WITH OR CONTRACTED BY THE WATERLEFE MASTER PROPERTY OWNERS ASSOCIATION, INC. (THE "ASSOCIATION"). THIS PUBLICATION, INCLUDING THE CONTENT OF ARTICLES AND ADVERTISEMENTS CONTAINED HEREIN, IS NOT AUTHORIZED OR ENDORSED BY THE ASSOCIATION. ANY ARTICLES INCLUDED IN THIS PUBLICATION AND/OR OPINIONS EXPRESSED THEREIN DO NOT NECESSARILY REFLECT THE VIEWS OF N2 PUBLISHING BUT REMAIN SOLELY THOSE OF THE AUTHOR(S). THE PAID ADVERTISEMENTS CONTAINED WITHIN THE FAIRWAYS & WATERWAYS MAGAZINE ARE NOT ENDORSED OR RECOMMENDED BY N2 PUBLISHING OR THE PUBLISHER. THEREFORE, NEITHER N2 PUBLISHING NOR THE PUBLISHER MAY BE HELD LIABLE OR RESPONSIBLE FOR BUSINESS PRACTICES OF THESE COMPANIES. **NOTE:** WHEN COMMUNITY EVENTS TAKE PLACE, PHOTOGRAPHERS MAY BE PRESENT TO TAKE PHOTOS FOR THAT EVENT AND THEY MAY BE USED IN THIS PUBLICATION.



www.n2pub.com
© 2016 Neighborhood Networks Publishing, Inc.

AREA DIRECTOR Eileen Bland
941-524-1687
eileen.bland@n2pub.com

PHOTOGRAPHER Ellen Sherman
www.ellenmarie.com

GENERAL MANAGER Ben Snowden
pittads@n2pub.com

CREATIVE TEAM Joe Pihlblad
Sarah Rinker
April Minton

CONTRIBUTORS AT LARGE The residents of Watrelefe Golf & River Club
We are always looking for residents to follow up on leads, find great stories and send us ideas. Let's celebrate the great things happening in our community! No contribution is too small. Please email eileen.bland@n2pub.com with your pictures, suggestions, or requests.

MeadowsFamilyDentistry

pediatric • orthodontic • adult care

For a Lifetime of Beautiful Smiles

Committed to providing outstanding dental care
Pediatric & Adult Dentistry • Child & Adult Orthodontics
Sedation Services • Financing Available
We Accept Most PPO Insurance



Call for your Appointment Today!!

941-745-1143
www.MeadowsFamilyDentistryFL.com

2015 TOP 1%  



This section has been created to give you easier access when searching for a trusted neighborhood vendor to use. Take a minute to familiarize yourself with the businesses sponsoring your newsletter magazine. These local businesses are proud to partner with you and make this magazine possible. Please support these businesses and thank them for supporting your community!

AIR CONDITIONING AND PLUMBING

Cool Today / N&M
(941) 462-2349
www.CoolToday.com

AIR CONDITIONING / REFRIGERATION

Modern Air and Refrigeration
(941) 727-0330
www.ModernAirNow.com

ART AND CULTURE

Manatee Performing Arts Center
(941) 748-5875
manateeperformingartscenter.com

ART AND PICTURE FRAMING

Integrated Art Services Inc
(941) 758-5300

ASSISTED LIVING / MEMORY CARE

Sheridan at Lakewood Ranch
(480) 471-8390
www.seniorlifestyle.com

ATTORNEY - REAL ESTATE

Riddell Law Group
(941) 366-1300
www.rlglawfirm.com

BOATS & MARINE SERVICE

Bow to Stern Marine Center
(941) 773-7602
www.bowtosternservice.com

CHIROPRACTIC CARE & WELLNESS

University Chiropractic Center
(941) 360-2220
www.universitychiropracticcenter.com

CLEANING SERVICES

Neat & Tidy Cleaning
(941) 928-3325

CONCRETE RESURFACING

Driveway Renew
(941) 264-9351

CUSTOM CABINETRY

Artist Woodworks Inc
(727) 667-8937
www.artistwoodworks.com

CUSTOM HOME BUILDERS

John Cannon Homes
(941) 361-1303
JohnCannonHomes.com

DENTISTRY- GENERAL & PEDIATRIC

Meadows Family Dentistry
(941) 745-1143
www.meadowsfamilydentistryfl.com

ELECTRICIAN & SOLAR ENERGY

Cool Today / N&M
(941) 462-2349
www.CoolToday.com

FINANCIAL ADVISOR / INVESTMENT PLANNING

Edward Jones
(941) 747-8103
www.edwardjones.com

FINANCIAL ADVISOR / WEALTH MANAGEMENT

Skybox Financial Group
(941) 753-3814
www.skyboxfinancial.com

FURNITURE & HOME ACCESSORIES

Miller's Dutch Haus Furniture
(941) 952-5646
www.dutchhausfurniture.com

GOLF CART SALES AND SERVICE

Mr. High Performance Carts
(941) 993-3248

HEALTH & WELLNESS

Whole Health
(941) 666-8757
www.WholeHealthLWR.com

INSURANCE

State Farm
(941) 748-2886
www.susiejackson.com

LANDSCAPE DESIGN & LAWN MAINTENANCE

Towne & Country Lawn & Maintenance
(941) 704-5677

LANDSCAPE DESIGN/ BUILD / CONSTRUCT

Little Farmers LLC
(941) 650-4253
littlefarmerslandscape.com

MOVING SERVICES

Davi & Valenti Movers
(941) 727-1459
www.davivalenti.com

PAINTING CONTRACTOR

Turner Painting LLC
(941) 730-7201
www.turnerpaintingfl.com

PERSONAL CHEF

Simply Sicilian
(941) 993-4566

PET SITTING SERVICE

Yappy Tails Pet Services
(941) 448-4358

PHOTOGRAPHY

Personalized Photoart Inc.
(941) 350-8865
www.PersonalizedPhotoArt.com

PHOTOGRAPHY - FAMILY - WEDDINGS - EVENTS

Ellen Marie Photography
(813) 317-4244
www.ellenmarie.com

PLUMBING SERVICES

Pete Kelley Plumbing, Inc.
(941) 747-4791
www.petekelleyplumbing.com

PROPERTY CARE AND MAINTENANCE

Top to Bottom Property Services
(941) 567-4918

REAL ESTATE - RESIDENTIAL AND COMMERCIAL

Barrett Realty
(941) 812-7983
www.barrettrealty1.com

REALTOR-LUXURY HOME SPECIALIST

Joe Murphy Team
(941) 780-3260
www.manateemoves.com

ROOFING

Kirkey Roofing Inc.
(941) 474-2113
www.KirkeyRoofing.com

ROOFING

Roofing By Curry
(941) 921-9111
www.WhyWorryCallCurry.com

VETERINARY SPECIALISTS

Braden River Animal Hospital
(941) 745-1513
www.bradenriveranimalhospital.com

WARDROBE STYLIST

Stylynn by Sheron
(941) 753-1794
www.StylynnBySheron.com

WEIGHT LOSS CENTER

Premiere Weight Loss Center
(941) 827-0024
www.bradentonweightloss.com

Get noticed.
Contact n2 for ad placement
www.n2pub.com

n2 publishing

Need someone that speaks fluent insurance?

Susie Jackson Ins Agcy Inc
Susie Jackson, Agent
2527 Lakewood Ranch Blvd
Bradenton, FL 34211
Bus: 941-748-2886
WWW.SUSIEJACKSON.COM

I'm your agent for that.
No one wants to pay for unnecessary extras and with my help, you won't have to. I'll help make sure you understand your options, and that you have the best coverage at the best price.
Like a good neighbor, State Farm is there.®
CALL ME TODAY.

State Farm™

1001183.1 State Farm, Home Office, Bloomington, IL

PUBLISHER'S NOTE

Your neighbors Frank & Donna are this month's Family Spotlight-enjoy their story. You'll also see some of the nature that surrounds you each and every day here in Waterlefe; these animals are both beautiful and amazing. Your MPOA has lots to share - their news is here to keep you up to date and informed.

Labor Day was celebrated on September 5th - I hope you had the opportunity to relax and enjoy. Patriot Day and Grandparents Day are celebrated on the 11th - tell someone special you love them today! As we head into fall hopefully the weather will cool a bit enabling you to take in some extra golf swings or days enjoying the river.

Last month you read about the wonderful event we did at Rosa Fiorelli Winery; there's a collage of Sponsors included in this edition. They took time out of their busy lives to enjoy wonderful company, exceptional wine and beautiful grounds. All of our sponsors look forward to meeting you, whether at an event or providing you with exceptional service; without them this newsletter would not be possible. If you've had the chance to do business with one of our sponsors - we'd love to hear you raves.

There are many of you who take time out to volunteer in the community. We Care Mantee, Inc. has a need for volunteers - They are a 501 (c) 3 nonprofit, and their mission is "to facilitate and/or provide medical care to low- income, uninsured adult residents of Manatee County, Florida at no cost. We provide comprehensive medical care, diagnostics, and prescription vouchers for acute and or chronic diseases, at no cost to the patient through one or more of our four main programs."

If you have some time and you are able to help out they are located at 300 Riverside Drive East, suite 4500, Bradenton, FL 34208 and can be reached by phone: 941.755.3952 ext.2 - I do have a flyer I can share via email if you'd like additional information before calling them directly - I am happy to pass it along.

Stay safe, be well, enjoy!

Eileen Bland

Area Director of Bradenton East
941-524-1687
eileen.bland@n2pub.com



Back to School Fun?!? Share your stories and photos! Do you have something you'd like to announce? Email your stories and/or photos to eileen.bland@n2pub.com. Anything family friendly is welcome!

Simply Sicilian

Placido Magra | Personal Chef



941-993-4566

f FB: Simply Sicilian

Simply Sicilian - Fresh for You - Served for You
Sugnu Siciliano - Fresco per Voi - Servizio per Voi

Neat n Tidy Cleaning

You won't be sorry! We are the best!

Free
Estimates



Licensed
and Insured

941-928-3325

Priority List upon request

General cleaning weekly, biweekly or monthly
Complete Cleaning - Specializing in Whole Home Tasks
We do offices and move in and move outs!

RLG RIDDELL
LAW GROUP
SARASOTA | VENICE | LAKEWOOD RANCH

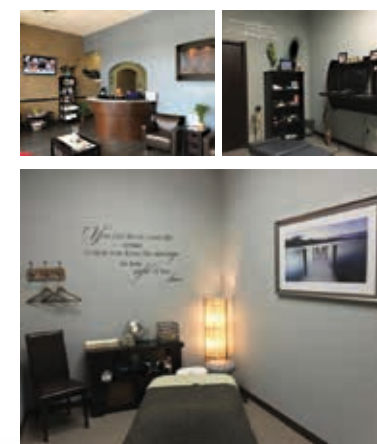


Cynthia A. Riddell
Attorney at Law
CRIDDELL@RLGLAWFIRM.COM

Office: 941-366-1300
Direct: 941-726-2789
8470 Enterprise Circle, Suite 300
Lakewood Ranch, FL 34202

- Residential Real Estate Closings
- Title Insurance
- Buyer and Seller Representation
- Deed Preparation
- Probate Administration
- Estate Planning
- Landlord/Tenant
- Contract Preparation

www.rlglawfirm.com



UNIVERSITY
CHIROPRACTIC CENTER

DR. BRADY ARNSPERGER

Your Neighbor - Your Chiropractor

- Prioritizing Patient Needs
- Competent, Qualified, Compassionate Care

941-360-2220

5245 University Parkway, Unit 101 | University Park, FL 34201

MPOA BOARD OF DIRECTORS THANK YOU

The MPOA Board wishes to thank all of the volunteers on our many committees. As you read every month there is considerable activity that, obviously, takes the time so generously supplied by our Waterlefe volunteers. The Board appreciates your efforts. New committee members are always welcome. Please contact the MPOA Board.

River Club Kitchen Expansion

Our kitchen addition, including nine new pieces of pizza and salad making equipment, is now operational. The staff continues to experiment with new menu creations as we fine tune operations. In late August, we will shut down the existing main kitchen to begin its refurbishment. This effort will upgrade and expand the cook line as well as create a new food prep area. The plan is to be completely operational before the end of September. We will have the entire kitchen facility online in time for return of our snowbird residents. Chef Dan and his staff will continue to serve a limited menu during shutdown of the main kitchen.

Design Review Board

With summer here, it's the perfect time for many outdoor projects. If you wish to make any exterior change to your property, please remember to get an application for change at the Property Management Office or you can print one from the Waterlefe website. Also, please be sure to review our guidelines that have been recently updated to ensure you are in compliance with our Guidelines and Covenants. Have a wonderful summer. Let's continue to keep Waterlefe beautiful!

WATERLEFE ARTISTS GUILD

Because of the pending construction of a new doorway from the kitchen and the associated reconfiguration of the front entrance and hall, in October, the WATERLEFE ARTISTS GUILD monthly exhibit will move to the Member's Room.

Amenities Committee

After consulting professionals in the field, the

Amenities Committee is constructing noise dampening panels for the River Club's Sunset Lounge. New accent painting will be completed in strategic locations in order to highlight the beautiful pictures that our Waterlefe photographers have donated.

As indicated above, this fall the Artist's Guild will relocate their art displays from the Lobby to the Member's Room. The resident photographs currently in the Member's Room will be re-hung in other prominent places within the River Club. Once this project is completed, a legend will be created to recognize the contributing photographers.

In conjunction with Property Management, several safety measures have been made to existing structures and other landscape enhancements have been completed.

We continue to work on several other projects that pertain to beautification of the River Club in 2017. Look for more announcements in the future.

The Watch and The Watch II Condos A friendly reminder from property management, please have your air conditioner serviced regularly. This time of year, it is very common for the condensation drain line to become clogged. By making sure the drain line is clear and draining properly, you can save hundreds of dollars from water damage repairs. Homeowners are reminded of this simple step, it is one of the most important maintenance items.

Property Management Manatee County Utilities Department has scheduled delivery of the new single stream trash containers to Waterlefe during the week of September 19. One blue 64-gallon wheeled container will be delivered to each house or condo address.

Once delivery starts, we will issue an email blast to the entire community. At this time, we ask owners who will not be here during that time to contact a neighbor, friend or relative and make arrangements for them to put the container away for you.

You can either keep the old containers for another use, or put them out at the curb for pick-up. With single stream recycling all recyclable items go into the new container; no sorting required. Additional information is provided in your MCUD bill, or is available on line at www.mymanatee.org.

WATERLEFE WELCOME COMMITTEE

We have welcomed seven more new residents to our community since last month's issue bringing the total to 21 for the year. We hope you all are enjoying living in Waterlefe as much as we do. The Welcome Committee thanks John Gittler for his help in supplying the maps that are sent out to new residents. We hope you find the maps helpful.

The Welcome Committee will be holding our semi-annual social gathering which we call "Meet and Greet" for all new residents in the fall when seasonal residents return. Once a

date is determined, those residents will receive an invitation. In the meantime, if you have any questions, please contact Anita Johnson at Anjohnston@aol.com or 941-746-2699.

You Can Make a Difference

A heartfelt thank you goes out to one of our Waterlefe Residents. Recently, a resident donated money to have weeds and brush removed from between the 8th green and 9th tee.

The golf course accepted the donation and completed the work. This was a win-win for the residents in the area and the golf course as the residents benefitted from an improved view of the river and the golf course is more visually appealing for golfers.

In addition to volunteering for a Waterlefe Committee, this is an example of another way to contribute to our Waterlefe Community. If you are interested in contributing to a mutually beneficial project, please contact one of the MPOA Board Members or Property Management.

Waterlefe Golf Club News

The Waterlefe Grille Room and Lefe Room will be closed August 22 through September 9 for painting and carpet replacement. Tee times and golf will be "business as usual" during this time-frame. Food and beverages are always be available. Mark your calendar: The final aerification of the greens will be September 6-8, 2016.

The WWGA and the WMGA have announced their Fall Get-A-Way to Lely Golf Club in Naples Florida. The ladies will travel October 10-12th, and the men will follow October 17-19. Details and sign up are available at the Golf Shop. The WWGA will also sponsor their annual Spooktacular Golf Tournament on Tuesday, October 25. Details will be forthcoming soon! Are you are thinking of a golf membership at the Waterlefe Golf Club? Ask about our fall promotion and getting three months of membership dues free! See you on the greens!

Moore's Dairy Farm (south boundary of Waterlefe)

A recent article in the *Observer* indicates, "A 289-acre parcel immediately south of Waterlefe soon will transform from a cow pasture into a community of up to 1,400 homes with associated commercial development." Our CDD successfully negotiated an agreement such that "Plans call for the realignment of Port Harbour Parkway to meander through the property rather than run in a straight line along Waterlefe's southern boundary east to Upper Manatee River Road."

Also important, "The proposed potential commercial/retail uses are limited to retail wholesale or office commercial uses that serve the community, such as food stores, convenience stores or offices for professional services, for example. Developer attor-



Towne and Country Lawn & Maintenance, LLC
Oscar Villegas • 941-704-5677
Enhancing your home's beauty with:
 Mowing • Edging • Weeding • Flowers • Mulching • Trimming

•••

ney Scott Rudacille worked out stipulations with Patricia Petrucci, attorney for the Waterlefe Community Development District, immortalizing a private agreement that commercial development will exclude certain types of businesses, including sexually oriented businesses, gas stations and bars, within 500 feet of Waterlefe.” See the CDD Update for additional detail.

Fort Hamer Bridge

A July 7 article in the Bradenton Herald indicates, “Workers were on an island midstream of the Manatee River this week to the east of Waterlefe Golf and Country Club.” Other important information, “The bridge will have a sidewalk on the east side, paved bike lanes and roadway lighting. A new traffic signal will be added on the south side of the bridge at its intersection with Upper Manatee River Road. A detour is planned for August-September while crews construct a new traffic pattern from Upper Manatee River Road to the south approach of the bridge.” The latest estimate for completion of the bridge is June 2017. See additional information in the CDD update.

CDD Summer Update as of July 2016

Greetings from sunny, warm and wet Waterlefe. I want to take this opportunity to update you on several issues and projects that are being worked on by your CDD Board.

As many of you know we have two seats open for election. Al Haibach has been confirmed to fill the position he was appointed to a result of a vacancy. Bill (Willie) Strollo is confirmed to serve as our newest Board member; he takes his seat in November. Congratulations to Bill. Chris Hogan decided not to run for re-election. The Board and residents thank Chris for his outstanding service to our community.

Budget — Our current budget shows we are on pace to be well under our stated budget for this year. Looking ahead to next year the Board voted to reduce the Operations and Maintenance fees by \$54.00 for each homeowner.

Assessment — All residents will see an assessment in their tax bill related to the settlement of the golf course bonds. That process is ongoing at this time but the cost per homeowner will be not more than \$365.00 per year. That is equal to \$1.00 a day per year. The exact number of years will depend on our ability to sell new bonds or obtain private financing which will impact the interest rate and number of years on the bond/loan as well. We expect to receive the last of the consent forms from the current bond holders accepting our offer to settle the bond debt. The Board received notice that the hearing on the bond validation process for the Golf Course Refunding Bonds was approved by the judge on the 25th of July validating the bonds and assessments. This settlement will conclude by September 1. As more information is available, you will receive notice.

WCI debt — The Board voted to settle the alleged debt owed to WCI and recover the purchase option. The settlement was completed in late June and as a result the Board, with the assistance

of the golf club saved \$50,000 on the final payment of \$450,000 to WCI. No additional assessment will be required from residents.

Shores — This legal journey is nearing a close with the last defendants appealing the verdict to the Court of Appeals. We are hoping for closure on this case in the near future.

Security/Parking regulations — New comprehensive parking regulations have been adopted for our roads and will be enforced with the assistance of the MPOA Property Management office. The new regulations restrict parking in all cul-de-sacs in the community. The regulations are on the CDD website. To further improve privacy for our community, we installed hardware to our Winding Stream Way gate so that only residents and approved vehicles will be able to enter or exit our community using that gate. We are waiting for appropriate signage to be installed to activate the system. The gatehouse is undergoing repairs and will be repainted later this summer.

Landscape — All fountains and water features have been repaired or replaced in various ponds. Planning for landscape work is continuing on the Waterlefe Blvd circle.

Ponds and Canals — The Board has approved stocking Blue Gill fish (Bream) in our waterways and selected ponds this November. This should be completed in the next two months. The Southwest Florida Water Management District (SWFWMD) has approved our permit for the stocking of the Triploid Carp. We are now awaiting sign off by FWC. We anticipate stocking the carp during the winter months. Our program to stock the waterways and certain ponds with Large Mouth Bass is under review by Aquatic Systems in order to determine the quantity and cost. If approved it will be done in the spring of 2017.

Erosion — The next phase of the erosion repairs for our ponds and canals is being scheduled to begin later this year after the rainy season and when the water levels are at their lowest. The areas to be done are being prioritized based on severity of erosion. Information will be communicated to the residents later this summer.

Roadways and walls — The pavers in the outside (outbound lane) at the gatehouse have been replaced and new gate sensors have been installed. Repairs and repainting of the entrance monuments walls throughout Waterlefe have been completed.



Ft Hamer Bridge — The end of the Bridge can be seen from the Waterlefe side of the river and it is about 40 percent complete coming from the Ft Hamer Road side of the River. We have a lot of activity near the Winding Stream Gate with the new Bridge access road beginning to take shape. You should be receiving regular updates

on the Bridge sent via email blasts. You can also go on the County’s website and look at the progress while you are away.

Medallion Property — Medallion is in the final stage of permitting with the County for development of their property. All commercial and multi family buildings will be on the side away from the extended Port Harbour Parkway road and Waterlefe. Construction is expected to begin around the last quarter of this year with the extension of the roadway.

Golf Course — All residents of Waterlefe receive up to a 20 percent discount for each round of golf throughout the entire year. Also, residents should look for special programs that will be available this fall to everyone as part of a community wide offer.

Membership — Currently at 127 full members and 33 summer program participants. It is a good possibility that we can convert at least 11 of these summer golfers to full time.

Activities—The Club sponsors four major championships each season. The champion golfers for 2016 are:
Club Champions: Men’s Bob Pelletier, Ladies Jean Paddison
Member Guest Champions: Men’s Tom King and Joe Farrell, Ladies Leslie Carroll and Annie Gilbert
Member-Member Champions: Men’s Al Bilotti and John Lippincott, Ladies Jean Paddison and Jerri Haibach
Plans are underway for the 2016/17 season events with the WWGA and WMGA planning fall golf outings to the Lely Resort in Naples. Member-Management Scramble and Hole-in-one parties kick off the year in early October. The WWGA will host the Spooktacular in October and the semi-annual meeting in Novem-

ber. The WMGA will kick off its season in December, with a one day Member-Guest tournament, and a Pro-Member tournament with the West Florida Golf Tour on the 13th of December.

Major Projects — The maintenance staff is working on several projects including repair of the bridges, traps and greens.

New Staff — Steve Dietz officially became General Manager of Golf Operations, and Matt Hill was promoted to Head Golf Professional. Grant Spencer joined the pro shop staff as first Assistant Professional. Chris Threatt was hired as our new Golf Course Superintendent in May.

CDD meetings—During the summer through September all meetings will be on the third Monday at 2 p.m. in the Lefe Room, unless otherwise announced. All residents are welcome and encouraged to attend. You can also get updates on the CDD website.

Finally, it has been a frantic six months for the Board and community related to the Golf Course Bonds, WCI discussions as well as the Shores hearings. I am pleased to tell you that most of these issues (WCI and golf bonds) have been resolved or should be finalized by the end of the summer. I personally want to thank the residents of Waterlefe for their patience and engagement on the issues that impact our community. Special thanks to the Board members, the Rizzetta staff and in particular Mr. Andrew Cohen, the CDD Board Attorney for his help and guidance through all of these matters.

MARY LUPI • 941-448-4358
WORRY - FREE PET SITTING

YOUR BEAUTIFUL LANDSCAPE BEGINS WITH

LITTLE FARMERS LANDSCAPE
A Full Circle of Services
Integrated Pest Management

A Full Circle of Lawn & Landscape Services

Tim Almeter
941-650-4253 | LittleFarmersLandscape.com

Where quality service and attention to detail are always in season



LITTLE DITTY ABOUT Frank & Donna family spotlight

Background: Frank was born in Washington, DC and grew up in a military family living in Europe three separate times during his childhood. Donna was born in Wisconsin and grew up in a small farm community.

They met in Washington D.C. and have been married for 30 years. They have a son together, Kyle, and Frank has a daughter, Ivy, from a previous marriage. They are proud grandparents of Ivy's 3-year-old son, Rory. Kyle, Ivy and Rory reside in Virginia. A third member of their household is their Norwegian Forest Cat, Whiskey.

Education: Frank received a Bachelors at American University in Washington D.C. and a Masters in Criminology from Florida State University. Donna received a Bachelors in Anthropology from the University of Wisconsin - Madison and her an MBA from George Washington University in Washington, D.C.

Careers: Both Frank and Donna had careers with the federal government. Frank was a Marine Infantry Officer (including a combat tour in Vietnam), a Diplomatic Security Agent with the Department of State, and had a long-term career as a Criminologist specializing in juvenile justice and delinquency prevention with the Justice Department.

Donna worked a majority of her career with the US Customs and Border Protection, Department of Homeland Security in Washington, D.C.

Living in Waterlefe:

After retiring, they moved to Waterlefe in early 2006. Since moving into the community, they have been



active volunteers at various times with CERT, the WWLS Annual Luncheons, and the Design Review Board. Currently, Donna is a member of a Waterlefe book club.

They love living in Waterlefe for the following reasons:

- the beauty of the natural setting
- the friendly neighbors
- close proximity to art and cultural activities in the area
- proximity to great restaurants (including the River Club)

Other Activities:

Frank is an active sailor and has competitively raced his Corsair trimaran in local events on Sarasota Bay and nearby Gulf waters. They are long time members of the Sarasota Sailing Squadron. They both enjoy sailing with friends and family on Sarasota Bay.

Frank and Donna enjoy exercising and working out in the community. They are active members of the Lakewood Ranch YMCA where they frequently work out and enjoy the classes offered, especially yoga. Donna also enjoys taking "fun" classes at the Lifelong Learning Academy in Sarasota — learning more about opera, art and meditation/spirituality.

They also enjoy traveling in the U.S. and abroad. Donna's most recent favorite trip was a week aboard a small vessel island hoping along the Dalmatian coast. Frank also enjoyed Croatia because he met a distant cousin and learned more about his

grandfather's roots. Other memorable trips include visits to New Zealand, Fiji, Ireland, London, and Paris. They are definitely checking items off their "bucket list!"

For the past four years, they have worked as poll workers with the Manatee County's Supervision of Elections' Office for all local, state and national elections — and this year's election will be a big one! In 2010, Donna worked with the U.S. Census Bureau in conducting the decennial census of population in this area.

Driveway Renew



Seal paver for longer -
Keep more of your sand.
We offer many options for concrete driveways.

Facebook • Twitter • Instagram



941-264-9351
drivewayrenew@gmail.com

Remember your special day for a lifetime.

Let our designers work with you to preserve your memories in a beautiful custom frame.



ONE DAY FRAMES ~ 4908 LENA ROAD
941-758-5300

ONE DAY FRAMES IS AN INTEGRATED ART SERVICES, INC. COMPANY
Proudly serving the Lakewood Ranch community since 2004



Worried about market volatility? Let's talk.



Julie G Mekhail, AAMS®
Financial Advisor
11053 Gatewood Dr
Lakewood Ranch, FL 34211
941-747-8103

www.edwardjones.com
Member SIPC

Edward Jones
MAKING SENSE OF INVESTING

MKT-5694F-A-A1

Barrett
Real Estate Auctions

What can Real Estate Auctions do for YOU?
MOVE. YOU. FAST.



All the advantages of auctions.

All the protection of traditional Real Estate transactions.

Sellers get a short-term commitment, a property that moves quickly, reduced traffic through Open House options, and 3.25% commission

Buyers get the same quick turn-around time plus the protections of traditional transactions AND complete bidding transparency.

941.745.9999

BRmovesYOU.com

BR
Barrett Realty

1823 Lakewood Ranch Blvd. Bradenton FL 34211

making a difference

VOLUNTEERING WITH THE RINGLING MUSEUM

You met Frank and Donna on the previous pages; your neighbors, community volunteers and that wonderful spirit of giving flows from the gates of Waterlefe. The following interview of Frank Porpotage, explains his volunteering activities with the John and Mable Ringling Museum of Art in Sarasota.

Tell us about the Ringling Museum.

The museum is the remarkable legacy of circus entrepreneur, art collector and financier John Ringling and his wife Mable. They purchased the property on Sarasota Bay in 1911 and eventually acquired additional surrounding acreage, Lido Key and Longboat Key. The Sarasota site was their winter home in the 1920s and due to their desire to share their renowned art collection, they built and opened the Museum of Art in 1930. Upon his death in 1936, John Ringling left his art collection and the 66 acre estate to the people of the Florida. Today, the campus includes the Museum of Art with 21 galleries of European, American and Asian works of art; the Ca'D'Zan, the mansion designed by the Ringlings; the Circus Museum; the Tibbals Learning Center, which houses a miniature circus of the period 1919 to 1938; the Historic Asolo Theatre of 1798; and the fabulous grounds and gardens of the Ringling estate.

What do you do as a volunteer at Ringling?

I am a Tram Driver. I operate an eight passenger golf cart, which transports visitors at the museum from one venue to another. Due to the size of the grounds, many, if not most, visitors take advantage of the trams to get to the various museum exhibits while enjoying the lush scenery. Tram drivers are charged with visitor safety and, of course with answering questions from the visitors about the various venues available to visit. Visitors frequently ask questions about the exhibits in the venues, what not to miss, and how to navigate the grounds. Because of our visibility and duties, we are often thought of as "roving ambassadors" for Ringling. The museum is truly a visitor-centered museum that strives to provide an outstanding experience to the guests. I work a minimum of one afternoon per week. There are over 500 volunteers in a variety of positions at Ringling.

What do you enjoy most about volunteering at the Ringling?

There are three major benefits to my volunteer experience. First, I have thoroughly enjoyed meeting and talking with individuals and families from across our country and from around the world. Everyone is in a delightful mood and this makes it fun and easy to be as helpful and accommodating as possible. As an example, I met an older Russian visitor on May 9, also known in Russia as the anniversary of Victory in Europe Day in 1945. (We celebrate the event here on May 8.) The gentleman saw my "Marine Vietnam Veteran" hat and told me that he had survived the Battle of Stalingrad as a teenager. He went to say that he was wounded twice during the six month battle — the first by a bullet and second time by shrapnel. He then proceeded to show me his scars! We, two former "cold-war" adversaries parted as friends.

The second benefit I enjoy about volunteering at the Ringling has to do with the beauty of the perfectly landscaped grounds and gardens. Three formal gardens



Frank with his Tram at Ringling

are on the grounds as Mable Ringling was an enthusiastic gardener. She and her husband landscaped the grounds with indigenous plants and trees and non-native trees from Africa, Australia, South Asia, and the West Indies. The gardens and grounds are so spectacular that the Museum has applied for Arboretum status. Walking or riding through these landscaped grounds and viewing a Sarasota Bay sunset among the towering Banyan trees can leave me in awe. It is inspiring every day I work as a volunteer at Ringling.

Finally, volunteers earn discounts for the Museum Store and Muse Restaurant. We also receive free day passes after accumulating a certain amount of volunteer hours, which we can use with friends and family when visiting.

Do you have any last words about the Ringling Museum?

Yes, the Ringling was voted by Trip Advisors as the number one attraction in Sarasota, and number two Florida Attraction. It is usually considered to be one of the top museums in the U.S. If any Waterlefe residents have not had a chance to visit the museum, they have a big treat when they do. Don't miss this wonderful place right in our back yard. And, if you're interested in volunteering at the Ringling, check out their web site for additional information.



Get to know your neighbors better by having your family featured in the next available issue! Email us at eileen.bland@n2pub.com.



**Roofing
by Curry**
Why Worry - Call Curry

WhyWorry-CallCurry!
Residential Roofing Since 1986!
Tile - Shingle - Metal - Flat
Roof Leak Repairs & Roof Replacements

941-921-9111
RoofingByCurry.com

Free Estimates!
Payment Options Available
Family Owned & Operated
All Work Guaranteed!



Jesse Gary



FL State Lic ccc1325654

Solid Handcrafted Amish Furniture,
always built in the USA!
www.dutchhausfurniture.com




Visit one of our large showrooms in Sarasota!

With TWO locations!
*3737 Bahia Vista Street
Sarasota, FL 34232
(941) 952-5646
*6100 N. Lockwood Ridge Rd
Sarasota, FL 34243
(941) 960-2942

5% off with this Ad!
In-Stock or Order
(Off regular price only, not valid on custom orders or previous purchases.) Exp. 01/2017



Herald Tribune
2016
SARASOTA & MANATEE
COUNTY
READERS' CHOICE
FIRST PLACE

The Baylee



**JOHN
CANNON
HOMES**
Build a Legacy.

Just across the river...where your dreams live.

The Baylee at The Islands on the Manatee River | 11736 Rive Isle Run | 941.444.6466
Coming to The Islands February 2017 | The Corindi by John Cannon Homes

6710 Professional Parkway West, Suite 100 | Sarasota, FL 34240 | 941.924.5935 | johncannonhomes.com | CGCA18551



ARTIST WOODWORKS, INC.
Custom Cabinetry

Indoor and Outdoor Kitchens • Vanities • Entertainment Centers
Offices • Libraries • Etcetera



727-667-8937
www.artistwoodworks.com
artistwoodworks@gmail.com





PENDING

FISH HOOK COVE

home of the month

Stunning riverfront paired villa with fabulous views of the Manatee River from the great room, kitchen, master bedroom and guest bedrooms. Relax in the private pool while enjoying spectacular views and sunsets. The 4 bedroom, 4.5 bath home contains numerous upgrades and custom finishes throughout. First floor master bedroom features large walk in closets, granite dual sink counters, tub and walk in-shower. Open kitchen with solid wood cabinets, stainless steel appliances, granite counter, pantry, pull outs in cabinets, convection oven and much more.

Dining room opens to courtyard pool area for easy entertaining inside and out. Solid wood doors, crown molding, upgraded lighting fixtures, tile and carpet throughout, brick paver driveway, walks, verandas and courtyard plus numerous additional upgrades complete this outstanding home. Don't miss this opportunity to live in a gorgeous riverfront home in the outstanding community of Waterlefe Golf & River Club. Waterlefe amenities are abundant: 24-hour guard gate, world class golf, boating, fine dining at the River Club, brand new state of the art fitness center, playground, nature trails, Jr. Olympic pool and tiki bar. Welcome to a beautiful home and a wonderful lifestyle!

Would you like to have your home featured in an upcoming issue or would you like to nominate one of your neighbors? Then send an email to: eileen.bland@n2pub.com.

Local or Long Distance...Consider Your Move Done
Locally Owned and Operated for Over 35 Years

Exceptional Service • Air Conditioned Storage
Professional Packaging & Crating • Free Estimates



Your Friendly Quote is Just a Phone Call or Click Away!
941-727-1459 • DaviValenti.com

DOT # 2388113
FL # IM2185



Interstate Agent For:



Trust Your Move to a Promover.

Your Air Conditioning, Electric and Plumbing Experts.

Afraid of what is
Lurking in your pipes?
\$93 OR IT'S FREE!
SEWER DRAIN CLEARING

*Some restrictions may apply. Outside Ground access. Call for details.

\$93 OR IT'S FREE!
SEWER DRAIN CLEARING

We'll open the drain or it's FREE! Plus, it's Guaranteed for 1 Year!

*Some restrictions may apply. Outside Ground access. Must be present at time of service. Cannot be combined with other offers. Expires one month from date of publication.

\$50 OFF ANY REPAIR

*New customers only please! Must be present at time of service. Cannot be combined with other offers. Expires one month from date of publication.

\$89 WATER HEATER TUNE-UP

Includes: Flushing (recommended annually)
Check Valves, Elements and Thermostats

Must be present at time of service. Cannot be combined with other offers. Expires one month from date of publication.

CoolToday CAC055539 | EnergyToday EC13005317 Electricians | PlumbingToday CFC1428238

NEVER AN OVERTIME CHARGE! 7 DAYS A WEEK!
941-584-8689

Schedule Online Today at CoolToday.com
[f/GetTheBestFromToday](https://www.facebook.com/GetTheBestFromToday)





precious pets

Florida River Otters

photos courtesy of Patsy Hall
by Pauline Dickson

River Otters have often been seen swimming in Waterlefe's ponds and streaking over the fairways. They weigh between 17 and 25 pounds and are brown furry mammals who never stray far from fresh or slightly salty water.

Otters have the ability to close their ears and noses while under water and their webbed feet and long thick tails propel them through the water very quickly. All-the-better to catch fish crustaceans, amphibians, reptiles, birds and insects; being able to see above and below the water, also helps.

When not eating they are curious and playful and can be heard making a variety of sounds such as chirps, barks, whistles and grunts.

Otters have dens called holts, which are dug into the banks or they may use a hollow log. The den will have its main entrance under water leading to a small chamber above the water level where it will raise its young. The babies are called kits and there may be as many as five. Born in the spring, they will stay in the safety of the den for several months.

Although thoroughly adorable to watch, be aware that they can, like any wild animal, be dangerous. In Newport Richey, a four foot otter seized a dog and dragged it into the water; otters have also been known to take out a small alligator. These attacks are highly unusual and could have been caused by the animal protecting its young. Please be aware.

Do you have a pet and would like to share his/her story? Then email eileen.bland@n2pub.com to have them featured in the next available issue! Dogs, cats, horses, fish and any other type of animals are welcome!



The two basic concepts

- 1.) ball position
- 2.) the position of the hands in relationship to the ball.

Standing directly over the ball ensures better alignment and a truer roll. The simple test to make sure you are properly lined up is to stand directly over the ball, then hold another ball over your dominate eye and drop it. If it hits the ball below, you're lined up properly. Easy as that!

The second principal is making sure your hands are in front of the ball. This will de loft the putter, which allows the ball to stay on the ground and prevents the ball from "hopping" on the green. If the ball becomes airborne during its approach to the hole, there is a greater chance that it will bounce off line. Keeping the hands in front of the ball in a "forward press," causes the ball to stay on the ground and gives you the best chance to make the putt.



Putting Drills

Putting

Coin Drill – This drill is designed to improve the consistency of the roll of ball on the green. The importance of having a true roll of ball is huge, if your ball is hopping and bouncing on the green then you don't have control. When performing the drill you need to be able to putt the quarter along the ground without it skipping or rolling.

If you'd like to discuss how you can better your game, give Matt a Call, 941-744-9771 x 23

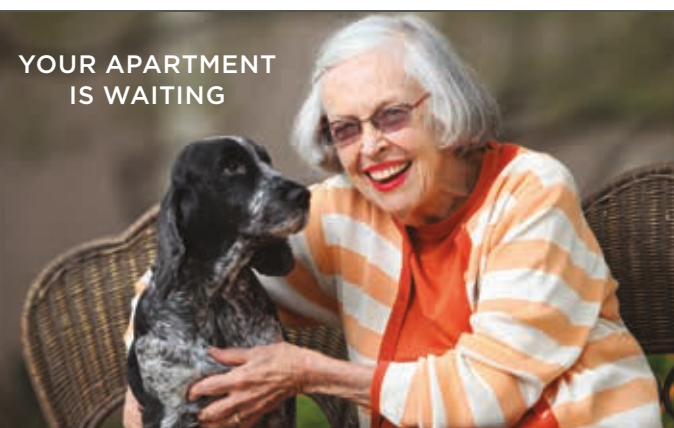


Are you a Waterlefe resident, love to golf, and have a tip you'd like to share - send your tips to share with your fellow golfers to eileen.bland@n2pub.com.

golf tip of the month

by Matt Hill

YOUR APARTMENT IS WAITING



No guarantee you'll spend much time there.

CALL 941-893-1986 FOR A TOUR TODAY!

THE SHERIDAN
AT LAKEWOOD RANCH
a Senior Lifestyle community

11705 EVENING WALK DRIVE
LAKEWOOD RANCH, FL 34211
Assisted Living Facility License #12858
WWW.SENIORLIFESTYLE.COM



Best-in-class assisted living & memory care



Mr HIGH PERFORMANCE CARTS

Serviceing all Makes & Model of Golf Carts
Sales, Service, Parts • Specializing in Performance Carts

T: 941-993-3248 | F: 941-417-2808
email: mrhpcarts59@yahoo.com

606 17th St E Suite D
Palmetto FL 34221



Pied-Billed Grebe



It has been years since we had limpkins at WATERLEFE, and this year we are lucky enough to have two.



Soft-shelled turtle trying to survive the alligator population.

The Wonderful World Of Waterlefe Nature

Pictures Courtesy of Patsy Hall



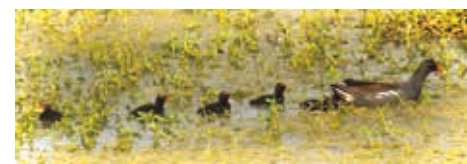
The new SAND HILL CRANE family on the third hole only stayed around for a few days.



Meanwhile, the impending hatching of the two eggs on the eighth hole seemed to go on forever, with a huge audience waiting right through the 29-32 days of incubation and then for another week. Unfortunately, both eggs were bad, and we didn't get our new colts.



This mottled duck family lives near the eighth hole.



Newborn Moorhens



The black-bellied whistling ducks, who have not been abundant in WATERLEFE for years, have been playing hopscotch on the roofs.



Arts & Culture

Sarasota Farmers Market

Where: 5 Points Park On Central Avenue And First Street In Downtown Sarasota
1592 Main Street
Sarasota, FL 34236

When: 7 a.m. to Noon (May through October)

The Sarasota Farmers Market was established in 1979. The market continues its tradition of serving the community with local produce, plants, prepared foods, and artisans. We currently have a full market that includes 55 vendors and 5,000 square feet of produce and plants. Hours: The market is held every Saturday (rain or shine)

Sylvia ... Love and Laughter Unleashed

Where: Bradenton Kiwanis Theater: Manatee Performing Arts Center
502 Third Avenue West
Bradenton, FL 34205

When: Sept. 15 - Oct. 2

In collaboration with The Humane Society of Manatee County
Associate Producer: PETE and ME

The world of a middle-aged New York couple is turned topsy-turvy when the husband brings home an exceptionally engaging canine running loose in Central Park. Her name is Silvia. This story is about her, the couple that takes her in, and the comedy that results. Rated-PG

To purchase tickets call 941-748-5875 or visit www.manateeperformingartscenter.com/event/sylvia/

FRIDAY FEST CONCERT SERIES:

The Dr. Dave Band
Join us for our FREE outdoor concert series Friday Fest
September 23.

Where: Van Wezel Performing Arts Hall
777 N. Tamiami Trail
Sarasota, FL 34236

When: September 23, 2016

A Bradenton favorite performing for more than a decade as the go-to house band at many Manatee county jaunts, the Dr. Dave Band is well-known for getting the crowd to their feet cheering,

dancing and singing along to their catalog of classic rock, country and Blues favorites.

Gypsy

Directed by Brad Wages, Musically Directed by Alan Cory

Where: The Player's Theater
838 N. Tamiami Trail/U.S. 41
Sarasota, FL 34236

When: September 28 - October 16, 2016

"Everything's Coming Up Roses" with this 1959 classic musical about the ultimate stage mother! Loosely based on the memoirs of famous strip-tease artist Gypsy Rose Lee, this piece is often referred to as "The Greatest American Musical."

For more information, please call the box office at (941) 365-2494 or visit www.theplayers.org.



MANATEE
PERFORMING ARTS CENTER
Artistic Inspiration for Everyone

941.748.5875 | 502 3rd Ave W. Bradenton, FL 34205
www.ManateePerformingArtsCenter.com

OPENING AUGUST 1ST



WHOLE HEALTH
DR. KINGA PORTER

COMBINING EVIDENCE BASED HOLISTIC MEDICINE WITH CUTTING EDGE WESTERN MEDICINE TO HELP YOU FEEL YOUR BEST.

Specializing in: Primary Care, Holistic Medicine, Integrative Medicine, Functional Medicine, Hormone Testing, Weight Loss, Thyroid Testing, Male & Female Sexual Dysfunction

11509 Palmbush Trail #202 Lakewood Ranch, FL 34202 | 941-666-8757 | WholeHealthLWR.com

Wine Tasting at Rosa Fiorelli Winery
Collage of Sponsors - Have you met
them? They'd love to earn your
business.



Your Important Numbers Sponsor -
Meadows Family Dentistry, Dr. George
& Jennifer Meadows



Your Featured Family Sponsor -
Driveway Renew, Jacob Weimer and
his wife Tamara



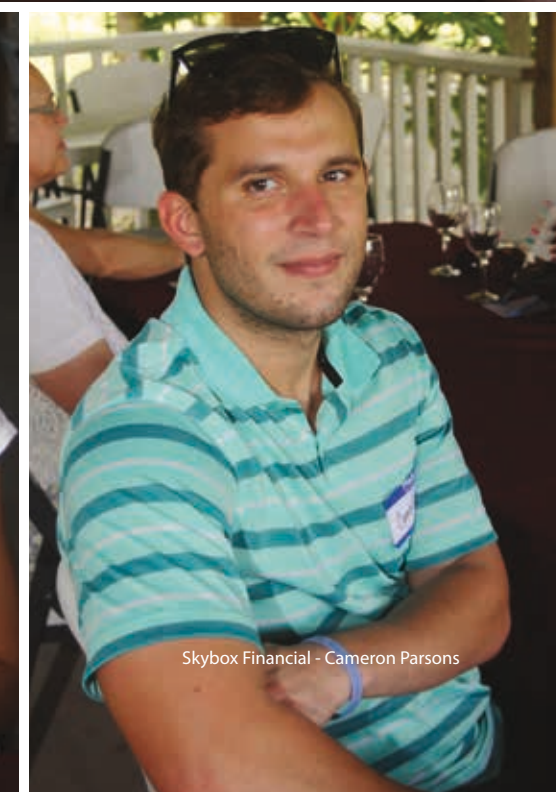
Ellen Marie Photography -
Ellen Sherman



Top to Bottom's Property Service -
Kymberli & Adam



Neat & Tidy's owner Barb Mullet and daughter Jennifer



Skybox Financial - Cameron Parsons

MANATEE COUNTY SCHOOL CALENDAR

School District of Manatee County 2016 -2017 Academic Calendar

August 2016						
S	M	T	W	Th	F	S
	1	2	3	4	5	6
7	8	9	10	11	12	13
14	15	16	17	18	19	20
21	22	23	24	25	26	27
28	29	30	31			

Aug 4 Teachers Return - Inservice
 Aug 5 Teacher Workday
 Aug 8 Teacher Workday
 Aug 9 Teacher Inservice
 Aug 10 First Day Students

September 2016						
S	M	T	W	Th	F	S
				1	2	3
4	5	6	7	8	9	10
11	12	13	14	15	16	17
18	19	20	21	22	23	24
25	26	27	28	29	30	

Sept 5 Labor Day - All District Sites Closed
 Sept 7 Professional Learning Early Release (District)

October 2016						
S	M	T	W	Th	F	S
						1
2	3	4	5	6	7	8
9	10	11	12	13	14	15
16	17	18	19	20	21	22
23	24	25	26	27	28	29
30	31					

Oct 3-4 Rosh Hashanah Oct 12 Yom Kippur
 Oct 5 Professional Learning Early Release (School)
 Oct 10-14 FTE Survey 2 Window
 Oct 13 End 1st Quarter (46 days)
 Oct 14 Record Day - No school for students
 Oct 21 & Oct 28 Elem Early Release
 Oct 24 Teacher Inservice - No school for students

November 2016						
S	M	T	W	Th	F	S
		1	2	3	4	5
6	7	8	9	10	11	12
13	14	15	16	17	18	19
20	21*	22*	23*	24	25	26
27	28	29	30			

Nov 11 Veterans' Day - All District Sites Closed
 Nov 21-25 Thanksgiving Break - Schools Closed
 Nov 24-25 All District Sites Closed
 Nov 24 Thanksgiving
 *Nov 21-23 Hurricane make-up days if needed

December 2016						
S	M	T	W	Th	F	S
				1	2	3
4	5	6	7	8	9	10
11	12	13	14	15	16	17
18	19	20	21	22	23	24
25	26	27	28	29	30	31

Dec 7 Professional Learning Early Release (School)
 Dec 12-21 MS/HS Exams (tentative)
 Dec 19-21 High School Early Release
 Dec 21 End First Semester (87 days)
 Dec 22-30 - All District Sites Closed
 Dec 25 Christmas

January 2017						
S	M	T	W	Th	F	S
1	2	3	4	5	6	7
8	9	10	11	12	13	14
15	16	17	18	19	20	21
22	23	24	25	26	27	28
29	30	31				

Jan 1 - New Years Day
 Jan 5 Record Day - No School for Students
 Jan 6 Teacher Inservice - No School for Students
 Jan 9 Students Return
 Jan 16 ML King Birthday - All District Sites Closed

February 2017						
S	M	T	W	Th	F	S
			1	2	3	4
5	6	7	8	9	10	11
12	13	14	15	16	17	18
19	20	21	22	23	24	25
26	27	28				

Feb 1 Professional Learning Early Release (District)
 Feb 6-10 FTE Survey 3 Window
 Feb 20 Presidents' Day-All District Sites Closed

April 2017						
S	M	T	W	Th	F	S
						1
2	3	4	5	6	7	8
9	10	11	12	13	14	15
16	17	18	19	20	21	22
23	24	25	26	27	28	29
30						

April 7 Elementary Early Release
 April 11-18 Passover
 April 14 Good Friday
 April 16 Easter

May 2017						
S	M	T	W	Th	F	S
1	2	3	4	5	6	
7	8	9	10	11	12	13
14	15	16	17	18	19	20
21	22	23	24	25	26	27
28	29	30	31			

May 3 Professional Learning Early Release (School)
 May 15-31 MS/HS Exams (tentative)
 May 26 Early Release All Schools
 May 29 Memorial Day - All District Sites Closed
 May 31 Last day for students - Early Release All Schools
 May 31 End 2nd Semester (93 days)
 Graduations: 5/17-SEHS, 5/18-BHS, 5/19-RRHS
 Graduations: 5/20-PHS, LRHS, MHS, Horizon/LIFE

June 2017						
S	M	T	W	Th	F	S
				1	2	3
4	5	6	7	8	9	10
11	12	13	14	15	16	17
18	19	20	21	22	23	24
25	26	27	28	29	30	

June 1 Post School Day - Last day for teachers
 June 12 Summer School begins (tentative)

March 2017						
S	M	T	W	Th	F	S
			1	2	3	4
5	6	7	8	9	10	11
12	13	14	15	16	17	18
19	20	21	22	23	24	25
26	27	28	29	30	31	

March 1 Professional Learning Early Release (School)
 March 16 End Qtr 3 (47 days)
 March 17 Record Day - No school for students
 March 20-24 Spring Break - Schools closed
 March 31 Elementary Early Release

July 2017						
S	M	T	W	Th	F	S
						1
2	3	4	5	6	7	8
9	10	11	12	13	14	15
16	17	18	19	20	21	22
23	24	25	26	27	28	29
30	31					

July 4 Independence Day
 Indicates Paid Holiday

District Assessment Calendar: http://www.manateeschools.net/files/_HGfH/_334ef17a872dcff63745a49013852ec4/2015-2016_Calendar_.pdf

Board Approved December 8, 2015



Do you have a favorite restaurant you'd like to review? Send an email to eileen.bland@n2pub.com and let us know who you'd like us to feature here

Braden River Animal Hospital

The Dogs Days of Summer are here and your trusted companion needs help staying cool too! Visit our web site to learn how to Help Rover Beat the Heat!

SUPERIOR FULL-SERVICE VETERINARY CARE
 Terry Clekis, DVM • Laura Eslinger, DVM • Crystal Berarducci, DVM • John Pierce, DVM

5012 SR 64 East
 Bradenton, FL 34208
(941)745-1513
www.bradenriveranimalhospital.com

Boarding and Grooming Facility Opening in late Summer

Family · Weddings · Events

813-317-4244 · www.ellenmarie.com
 email: ellenmariephoto@gmail.com

YOUR ROOF'S BEST FRIEND

Re-Roofs · Repairs

\$50 off Repair
\$500 Off Re-Roof
 ** Register on web-site for complete terms and conditions!

ROOF ROOF

"The crew of men & women you have, is commendable - they made a dreaded job seem like a piece of cake!" - Pat Mielke

Ask us about:
 Hurricane Warranties
 Energy Savings and Rebates
 Flat Rate Guaranteed Pricing for repairs

KIRKEY ROOFING INC.

WWW.KIRKEYROOFING.COM
941-462-2335



TURNER PAINTING LLC

Licensed • Insured • Free Estimates

CASEY TURNER

941-730-7201

CTURNERPAINT23@GMAIL.COM

WWW.FACEBOOK.COM/EFWERFAWDSF

WWW.TURNERPAINTINGFL.COM

Tired of looking at the same old clothes and you don't want to replace your entire wardrobe?



Wardrobe Therapy on a Dime

Stylynn By Sheron

941.753.1794

Working with the "Lonely Clothes" in the back of your closet, We Can:

Create your personal wardrobe "Look Book" reflecting your image and style.



Color Drape to determine if you are in the right colors.



Assist with what to keep, donate \$25 per hour • 2 hour minimum

Sheron Benkert • StylynnBySheron.com StylynnBySheron@gmail.com

Real Estate RESOURCE

Featured properties may not be listed by the office/agent presenting this brochure. Source Multiple Listing Service. All information herein has not been verified and is not guaranteed. Supplied by Joe Murphy Team



Address	Neighborhood	Sale Price	Sold Date	DOM	Beds	Baths	SqFt
9704 PORTSIDE TER Unit#9704	WATERLEFE GOLF & RIVER CLUB UN9 PB39/10	\$255,600	04/29/16	905	2	2	1,765
9612 PORTSIDE TER	WATERLEFE GOLF & RIVER CLUB UN9	\$315,000	04/26/16	85	2	2	1,765
9415 PORTSIDE TER	WATERLEFE GOLF & RIVER CLUB UN5	\$325,000	04/20/16	156	3	2	1,885
819 WHOOPING CRANE CT	WATERLEFE GOLF & RIVER CLUB UN 1	\$630,000	04/20/16	65	5	4	4,049
943 RIVER BASIN CT Unit#102B	WATERLEFE AT THE WATCH	\$263,000	04/18/16	13	3	2	1,777
618 FOGGY MORN LN	WATERLEFE GOLF & RIVER CLUB UN5	\$245,000	04/05/16	319	3	2	1,540
910 RIVER BASIN CT Unit#202D	THE WATCH AT WATERLEFE PH II	\$214,000	04/01/16	67	3	2	1,388
9708 PORTSIDE TER	WATERLEFE GOLF & RIVER CLUB UN9	\$285,000	03/31/16	167	2	2	1,565
10310 RIVERBANK TER	WATERLEFE GOLF & RIVER CLUB UN 3 PB37/89	\$1,150,000	03/25/16	597	4	4.5	4,438
10638 RESTORATION TER	WATERLEFE GOLF & RIVER CLUB UN7	\$615,000	01/15/16	74	4	3	3,057
9453 DISCOVERY TER Unit#102B	THE WATCH II AT WATERLEFE A CND	\$247,450	12/29/15	102	3	2	1,777
728 FOGGY MORN LN	WATERLEFE GOLF & RIVER CLUB UN4	\$290,000	12/18/15	221	3	2	1,848
10630 RESTORATION TER	WATERLEFE GOLF & RIVER CLUB UN7	\$440,000	10/23/15	360	4	3	2,846
9630 SEA TURTLE TER Unit#102	THE WATCH AT WATERLEFE CONDO	\$182,500	10/16/15	127	2	2	1,156
9454 DISCOVERY TER Unit#201C	THE WATCH II AT WATERLEFE CONDO	\$250,000	10/15/15	586	3	2	2,343
9435 DISCOVERY TER Unit#102B	THE WATCH II AT WATERLEFE A CND	\$250,000	10/07/15	227	3	2	1,666
9419 PORTSIDE TER	WATERLEFE GOLF & RIVER CLUB UN5	\$300,000	09/25/15	86	2	2	1,921
10606 RESTORATION TER	WATERLEFE GOLF & RIVER CLUB UN7	\$485,000	09/22/15	113	4	3	2,588

PETE KELLEY PLUMBING, INC.



PETE KELLEY PLUMBING, INC. GUARANTEES:

All work performed by a master plumber

Drug free, non smoking, non drinking professionals

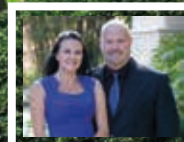
Honesty, integrity and quality workmanship at a great value



941-747-4791 • CFC1426336 • www.petekelleyplumbing.com



WATERLEFE REAL ESTATE EXPERTS



Joe & Molly Murphy | 941-780-3260 Direct | joe@manateemoves.com

941-739-6777 Office | www.manateemoves.com

2015 Top 10 Coldwell Banker Team Nationwide

Waterlefe Residents for 13 Years
Broker Associate / Realtor

Fairways & Waterways

RESIDENT BUSINESS GUIDE

Attention Waterlefe Residents: Do you own or run a business? To have your business featured in the resident business guide in *Fairways & Waterways* please send an e-mail to eileen.bland@n2pub.com.

CHIROPRACTIC & WELLNESS

University Chiropractic Center

Dr. Brady Arnspenger
(941) 360-2220
www.universitychiropracticcenter.com

DOG GROOMING

De La Pooch

Denise DeSaulnier
(941) 748-2626

HANDYMAN / REMODELING

Jerry's Remolding Service

(Owned by Roger

Michaelsen)

Roger Michaelsen
(941) 739-2582
ramichaelsen@verizon.net

INSURANCE

Insurance Time of Bradenton

Nancy Bancs
(941) 746-5151
nancy@insurancetime.org

INVESTMENTS

Oppenheimer & Co. Inc

Richard Carpenter - Senior Director - Investments
(941) 363-2800
richard.carpenter@opco.com

KW LUXURY HOMES

Keller Williams Realty International

Roberta Burish GRI < TRC. CLHMS
(941) 704-4223
rburish@kw.com

LUXURY REAL ESTATE SALES

The Murphy Team -Coldwell Banker

Joe Murphy
(941) 739-6777
joe@manateemoves.com
www.manateemoves.com

MOVING

Davi & Valeti Movers

Jason Taylor
(941) 727-1459
www.davivalenti.com

REAL ESTATE

Michael Saunders &

Company "Howies Homes

Team

Howie Drourr
(941) 842-6476
howie@howieshomes.com

Michael Saunders &

Company "Howies Homes

Team

Karen Enis
(941) 224-0297
karen@howieshomes.com

Michael Saunders &

Company "Howies Homes

Team

Robyn Drourr
(941) 812-7778
robbyn@howieshomes.com

RV SALES & SERVICE

Dream RV

Chad Paulson
(941) 748-8889
dreamrvfinance@yahoo.com
www.dreamrvfl.com

TOP TO BOTTOM CLEANING AND HOME WATCH SERVICE

Trees Need Attention Too - Trimming Now Might Save a Headache Later!

Cleaning / Home Watch Services We Provide :

- Weekly, BiWkly & Monthly Basic Cleaning Service
- Detailed / Spring Cleanings
- Rental / Vacation Cleanings
- OMG... Help me !!! Kids / Grandchildren just visited..
- All Cleaning Chemicals & Equipment supplied by us
- Weekly house checks for Home Watch clients
- Removal of flyers, package, mail & other evidence of non occupancy
- Handyman & Minor Plumbing Services
- Tree Trimming
- Available 24/7 for emergencies
- Weekly or Monthly Home Watch Rates available
- Servicing Manasota area Since 1998



Excellent References From Your Waterlefe Neighbors

941-726-4143 • 941-567-4918

TopToBottomPropertyService@Hotmail.Com

Kymerli Winter / Adam Baker



Cameron Parsons | Financial Consultant: Skybox Financial Group

Cameron@SkyboxFinancial.com | www.skyboxfinancial.com

941.753.3814

*This isn't just my job - it's my passion.
My goal - help you.*



**Complimentary Engagement Meeting
for all Waterlefe Members**

**Financial Goals & Objectives
Wealth Management | Financial Organization
Estate Planning | Cash Flow & Budgeting**

**EXCLUSIVE WATERLEFE GOLF &
RIVER CLUB MEMBER'S SPECIAL**

\$2,000 6-Week Financial Consultation Workshop (Normally \$4,500)

Or

FREE 6 Session Financial Consultation Plan for New Investment Clients

MIRACLE LEAGUE OF MANASOTA

4 years as a Coach
3 years Board of Directors

The Miracle League of Manasota is a 501(c)(3) organization dedicated to providing an opportunity for all children to play baseball, regardless of their ability. Filled with smiles, tears, laughs, and best friends. No disability on earth could hold us back. At our ballpark, Miracles happen every day.

Past performance is not a guarantee of future financial results. Skybox Financial Group cannot guarantee future financial results. Skybox Financial Group and its representatives do not provide tax or legal advice. Consult with your tax advisor or attorney regarding specific tax issues. Advisory services offered through Skybox Financial Group. Skybox Financial Group is independent of CAMAS. Certain representatives of Skybox Financial Group are also Registered Representatives offering securities through Comprehensive Asset Management and Servicing, Inc., Member FINRA/SIPC 2001 Route 46, Suite 506, Parsippany, NJ 07054

Fairways & Waterways

PRSR STD
US POSTAGE PAID
WILMINGTON NC
PERMIT NO. 40

FL_Bradenton East



Start Building The "New You" Today.

Premiere
weight loss center

We're here to help you reach your goals.

(941) 827-0024
bradentonweightloss.com

YOU CAN DO THIS

Fully Licensed & Board Certified