

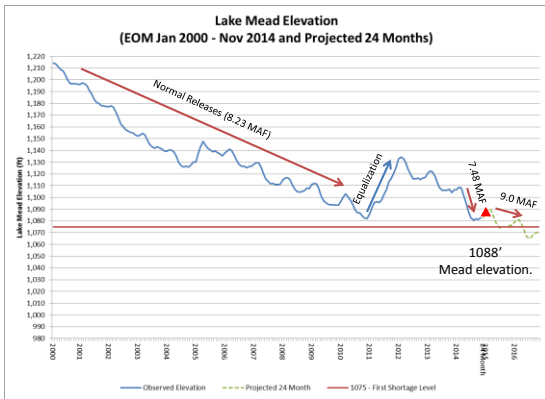
Shortage Sharing

- Arizona and Nevada share Lower Basin shortages under the 2007 Guidelines
- Mexico voluntarily agreed in Minute 319 to accept reductions in its deliveries at the same elevations

Lake Mead Elevation	Arizona Reduction	Nevada Reduction	Mexico Reduction
1075'	320,000 AF	13,000 AF	50,000 AF
1050'	400,000 AF	17,000 AF	70,000 AF
1025'	480,000 AF	20,000 AF	125,000 AF

No reductions to California under 2007 Guidelines





Colorado River Status: Future Shortage?

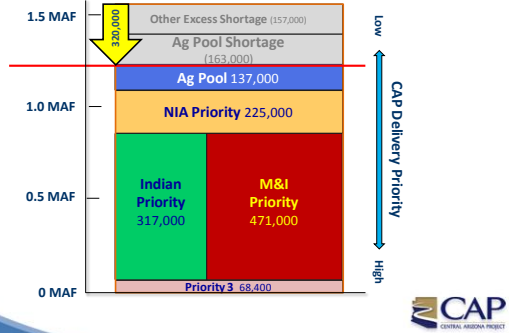
16th Year -- Ongoing Record Drought

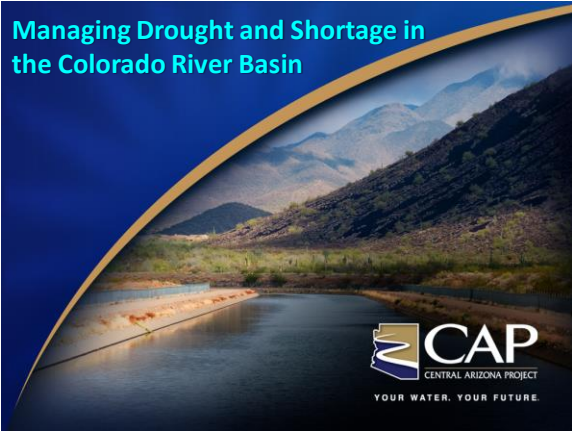
Lake Mead is at elevation 1084 feet = 40% capacity

- 2016 – **No Shortage**
- 2017 – **15%** probability
- 2018 – **52%** probability



2017 Level 1 Shortage





Drought Response & Sustainability Strategies

- **Storage:**
 - CAP and Arizona Water Bank stored water underground for future recovery during shortages (3.7 MAF – over twice of CAP’s annual diversions from the Colorado)
- **Conservation/Efficiency**
 - System Conservation
 - Pilot System Conservation Agreement (targets 75 KAF)
 - Pilot Drought Response Actions MOU (targets 740 KAF)
 - Brock Reservoir water savings (100 KAF/year)
 - Workgroup exploring options to address bypass and excess flows to Mexico
- **Augmentation**
 - Expand Weather Modification projects in the Upper Basin (2006-present) & Tamarisk removal
 - Desalination studies for the Lower Basin (desalination is "drought proof")
 - Potential partnerships for Seawater Reverse Osmosis with Mexico and other U.S. Users
 - Yuma Desalting Plant pilot run

Overview of MOU: Reservoir Protection

- CAP is working on a reservoir protection plan with other Lower Basin water users and taking steps to protect Lake Mead (MOU is the first step)
- Protection Volume: use "best efforts" to create additional storage or system water
- Term: '14 – '17
- **CAP = 345 kaf** (stored >200 kaf to date)
- MWD = 300 kaf
- SNWA = 45 kaf
- BOR = 50 kaf



Use of CAP Water By Golf Courses

- CAP water is used by more than 20 courses at an annual volume of 10,000+ acre feet
- Excess water supply for golf courses and other small users has diminished; no excess water will be available in the near term
- Most courses have agreements with M&I subcontractors for untreated, priority water and pay fees to the municipality



Questions?

