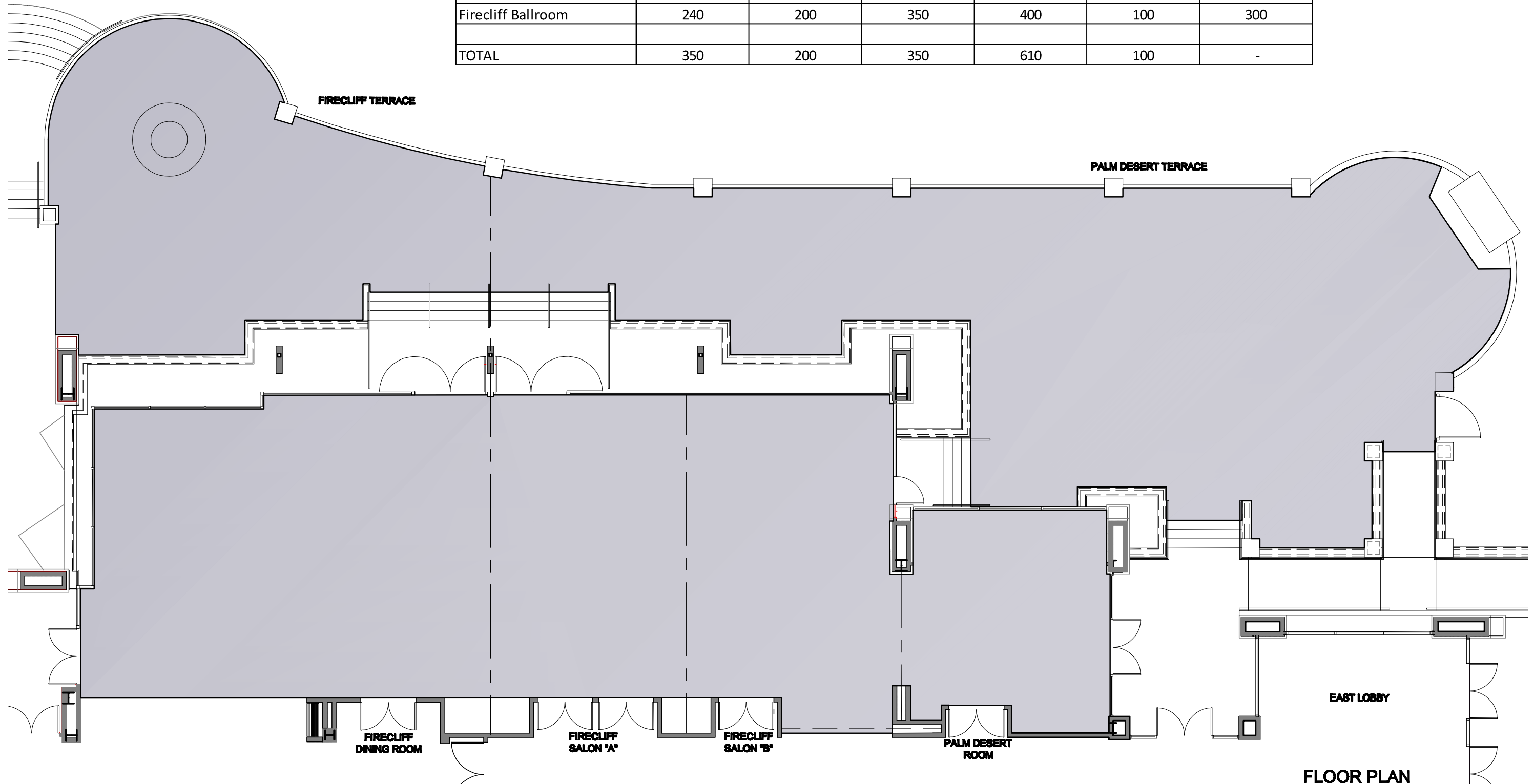


# FIRECLIFF BALLROOM, & FIRECLIFF TERRACE

AREA: 7,234 SQ. FT.



| Room Name           | # of Guests Seated at Banquet Seating | # of Guests for Classroom | Theater | Reception | Crescent | Ceremony |
|---------------------|---------------------------------------|---------------------------|---------|-----------|----------|----------|
| Firecliff Terrace   | 30                                    | -                         | -       | 60        | -        | -        |
| Palm Desert Terrace | 80                                    | -                         | -       | 150       | -        | 120      |
| Firecliff Ballroom  | 240                                   | 200                       | 350     | 400       | 100      | 300      |
| TOTAL               | 350                                   | 200                       | 350     | 610       | 100      | -        |



FLOOR PLAN  
SCALE: 3/32" = 1'-0"