



# The Rock Newsletter

## *Message from President~ Craig Bohn*

---

I would like to take this opportunity to extend a special THANK YOU to the Board members whose tenure expired earlier this month. Elyce Kahn / Vice President & House Chair, Charles Marsh / Secretary –Treasurer & Finance Chair and Glenn Kliebert / Membership Chair. These members have represented RCC with great commitment, vision and were truly great leaders for the club. As President I could not be more proud of these three members and everything they helped to accomplish throughout their term.

I would also like to welcome the three newly elected members. Charles Marsh, Barbara Smyth and Jeanne Arnold. They each bring to the Board a wide range of experience from employment at the US Treasury Department, a past President of RCC and world-wide deployments defending our country. Very impressive group and we are pleased to have each of them as new Directors.

As this Board plans and prepares for the future we all Thank You in advance for your continued support. Our goals are simple: 1) Continue to grow our membership in all categories, 2) offer you the best possible service standards and product quality and 3) continue to elevate the financial position of the club.

I look forward to serving as your President for 2021 and ask for your continued support.



## *Message from the GM~ Rick DeLoach*

---

March was a very challenging month for RCC. As you know we had Covid 19 hit our staff and we ended up with four positive cases. While we consider ourselves lucky in that we went one year with no cases it hit home in March. I'm pleased to inform you that all have fully recovered and everyone has returned to work.

We will continue to take every possible step to insure that we provide you a safe and healthy atmosphere while at the club.

On a more positive note, the sod is down on #1 and filling in nicely. Weather permitting we will have the new grass down on #10 by next week. We were also able to complete some patch work on #9 and #18 both of which are filling in nicely. In addition to the work on the course we have purchased new pool furniture and outdoor lighting for the upcoming summer months.

Finally, thank you to all that have responded about your vaccinations. As of right now about 30% of the membership has responded that they have been vaccinated. If you have not responded please drop Chris a quick email and let her know at [cdeloach@rockportcc.com](mailto:cdeloach@rockportcc.com).



## Golf Operations~ Thane Emerson

### “SHOWDOWN AT THE ROCK”!

March 27<sup>th</sup> & 28<sup>th</sup> Gunslingers out dueled the Outlaws!

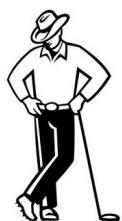
For the 2<sup>nd</sup> year in a row the Gunslingers Captained by Arno Penshorn and Assistant Dan Holiltzke took the lead after the first day 15 - 9 and did not let up on the Outlaws defeating them

26-14 for the 2 day total. The overall series is tied up 2-2 after the Outlaws won the first two events.

The Outlaws were Captained by Ed Patterson and Assistant Jeff Atteberry.

Special Thanks go out to the  
Captains and all that participated in this year's event!

### Gunslingers



### April Events

- 8 MGA Tournament 9:00 Shotgun
- 9, 10 & 11 Ladies Individual Match Play Tournament  
Tee Times begin at 9:00 AM each day
- 15 Area 8 AGC Outing 1:00 Shotgun  
\*8:30 Shotgun for Member Play
- 17 MGA/LGA Tournament 9:00 Shotgun
- 24 LGA Saturday Playday Tee Times 8:50-9:20
- 25 Sunday Couples Tournament 1:00 Shotgun  
Format: Select Drive – One Best Ball Net  
Entry Fee: \$20 per player
- 26 & 27 Golf Course Closed Monday & Tuesday for  
Greens Aerification



28<sup>TH</sup> ANNUAL SPRING MEMBER-MEMBER  
MARCH 13 & 14, 2021  
RESULTS

LADIES 1 <sup>ST</sup> FLIGHT		SCORE
1 <sup>ST</sup>	Elaine Davis/Shelley Gatlin	73-99=172
2 <sup>nd</sup>	Barbara Poth/Retta White	73-104=177
3 <sup>rd</sup>	Betty Lamb/Bilinda Hulse	74-106=180*
	Eunice Hellums/Charlotte Sherman	71-109=180
* Won Scorecard Playoff		

LADIES 2 <sup>ND</sup> FLIGHT		SCORE
1 <sup>ST</sup>	Jan Sutter/Shirley Hartnett	75-100=175
2 <sup>nd</sup>	Laura Wilson/Ann Barkley	76-107=183
3 <sup>rd</sup>	Linda Bohn/Pat Bellefeuille	72-113=185

MEN 1 <sup>ST</sup> FLIGHT		SCORE
1 <sup>ST</sup>	Dan Holitzke/Tommy Wright	67-103=170
2 <sup>nd</sup>	Bruce Hood/Alan Prigge	73-99=172
3 <sup>rd</sup>	Roger Saylor/Dave Moreland	66-107=173
4 <sup>th</sup>	Matt Lynch/Luke Wester	71-106=177*
	Jeff Hulse/Chuck Schwing	69-108=177
	John Wheeler/Doug Smith	70-107=177

MEN 2 <sup>ND</sup> FLIGHT		SCORE
1 <sup>ST</sup>	Tony Legner/Brad McDonald	68-107=175
2 <sup>nd</sup>	Jim Ryan/Dennis Verthein	71-106=177
3 <sup>rd</sup>	Scott Bibeau/Craig Bohn	73-105=178
4 <sup>th</sup>	Greg Zoll/Arno Penshorn	68-110=178

CLOSEST TO PIN

Saturday -	Ladies #3	Tatsumi Isada
	White Tees #15	Steve Carter
	Gold Tees #7	Jeff Hulse
Sunday -	Ladies #7	Betty Lamb
	White Tees #12	Dave Moreland
	Gold Tees #3	Dennis Verthein

## MGA~ President Ed Patterson

I would like to be the first to acknowledge Jeff Hulse for his successful service as the President of the RCC MGA and to congratulate him for all that the MGA was able to accomplish in 2020, the most difficult of years. Jeff partnered up with Chris DeLoach and together they grew the MGA membership by 31 golfers during his term as president. Under his direction the MGA purchased a Jon boat for the maintenance crew to use to trim the heavy aquatic plant growth around the ponds. Your MGA provided the funds necessary to purchase the grass sprigs to establish a “Greens” nursey and a second chipping area on the driving range. In March the MGA purchased 4 “Barn Owl” houses to begin to launch a natural way to control the moles or whatever animal is making those sand mounds. With the assistance of Bruce Hood and Neil Adams the Houses were installed at various locations on the course. The signature tree located in the greenside trap on the 16<sup>th</sup> hole that we lost during Harvey is going to be replaced by RCC. The MGA has committed to cover the total cost. Jeff teamed up with Bruce Hood our greens committee chairman and Red Hunt MGA past president to select the perfect tree from Bloomers Nursey. RCC Superintendent Derrick Hashimoto was also present to pick a planting spot that would not hinder our golf course and to make certain the new tree would block most of our approach shots to the green, thanks Derrick! Who knows maybe in a couple of three years someone might offer us twice as much money to cut it down!

All total the MGA in 2020 returned over \$6,000.00 back to our golf course. **JOB WELL DONE JEFF.** When you have the opportunity congratulate Jeff on a very successful year.

The Thursday March 11th MGA event was labeled “**Just Golf**”. The field was divided into groups of (4 or five) players whose handicaps was similar and each group had a Gross Winner and a Net Winner, it was a new format, unique in the fact that you were competing only against the other golfers in your group. We had 34 players, Doug Smith, Ed Patterson, Mike Whitney, Alan Prigge, Michael Hord, Greg Zoll, Brad McDonald, Brett Bohn, Keith Gibson, John Idling, Paul Dacy, Scott Bibeau, Roger Saylor, Jeff Hulse, Jack Wright, Danny Lee, and Bruce Frazier were all winners in their flight.

The Saturday March 20th MGA event was “**3-2-1 LOW NET**”. We had 28 players. The team of Bruce Hood, Terry Thompson, Chuck Robinson and Bob Meador won the event with a total team score of 108 (fantastic score). Second place was the team of Jim Valenti, Jeff Hulse, Scott Bibeau and Keith Hamilton with a total team score of 119.

The event dates for next month are **Thursday April 8<sup>th</sup>** and **Saturday April 17<sup>th</sup>**. Sign up sheets will pop up in golf shop, mark your calendars, and sign up and enjoy the fun.

Brad McDonald has volunteered to serve this year as the vice president, and I am excited to be able to team up with Brad.

*Thank You for being a member*





## LGA~ President Betty Lamb

---

The annual LGA Ladies Match Play Tournament will be held April 9, 10 and 11. We're really hoping for a good turnout for this fun tournament – sign up in the Golf Shop. The Ladies Sandbox Invitational Tournament has now been rescheduled to October 5 and 6. It was canceled twice in 2020 due to COVID -19 and we also canceled our April 2021 Sandbox due to COVID. Hopefully we'll be more successful with our planned October date. Thank you LGA members for participating in the Spring Member/Member Tournament on March 13 and 14. We had a great turnout and even managed to get quite soaked (and cold) on Sunday! Golfer of the Month for March 2021 is Linda Bohn. Way to go Linda!

The RCC LGA welcomes our four newest LGA members! Stephanie Redding, Mary Lessor, Sandy Richard and Debbie Conger. Thank you for joining and supporting the RCC LGA. We look forward to getting to know you better and having some fun times golfing.

---

### Ladies Nine Hole Golf – “The Niners”

Ladies if you are interested in a nine hole non-competitive round of golf RCC has what you are looking for. The Niner's, as they call themselves, play only nine holes with a primary focus on just having fun and making new friends.

If you are interested please contact Barbs Meader at 361.205.6606 or Jeanne Arnold at 512.585.4019.

---

## RCCLA~ Rhoda Collier

---

### *Rockport County Club Ladies Association*

#### *“High Tea”*

*Friday, April 9th, 2021  
2:00 - 4:00  
Rockport Country Club*

*In Memory of Aida 'DeDe' Valenti  
RCCLA President 2020-2021  
Donations honoring DeDe may be made  
to The Rockport Fulton Humane Society  
and Adoption Center*



*Cost is \$25.00  
RSVP by Tuesday, April 6th,  
to Beverly Dickson @ [bdickson@rockportcc.com](mailto:bdickson@rockportcc.com)  
or (361)450-4980*

Join us to Honor our past President  
DeDe Valenti at a High Tea  
April 9, 2021  
2 TO 4pm  
Cost \$25

**MAKE YOUR RESERVATION  
BY APRIL 6  
AT 361-450-4980 #2**

**ALL LADIES OF RCC AND  
GUESTS ARE WELCOME.**

Save the Date:

May 21, 2021

RCCLA trip to Goliad, Texas  
Includes bus transportation,  
tour Goliad State Park,  
lunch....and of course  
time for shopping!



# IMPORTANT ANNOUNCEMENT

RCC Members,

As you know, on March 10<sup>th</sup> Governor Greg Abbot signed an executive order to re-open Texas to 100%. As a club, we have followed his lead with some basic operating procedures. We believe it is now time to move forward with the re-opening of RCC.

## Effective Tuesday April 5<sup>th</sup>

Both men's and women's locker rooms will re-open for gatherings

Card games, mah jongg and gaming may resume in the clubhouse

Fitness center will no longer have limited workout times

We ask that all golfers start pairing up on golf carts. Most everyone has enjoyed the single cart ridership however we need to start moving towards two players per cart. The club plans by May 1<sup>st</sup> to fully comply with not more than two carts per group or not more than three carts per group with more than four players

The Copper Room Bar will extend the hours of operation until 7:00 PM on Tuesday, Wednesday and Sundays.

Dining reservations will be extended to 8:30 PM on Thursday, Friday and Saturday nights

Weekday lunch buffet will start up again on April 6<sup>th</sup>

Copper Room Bar Happy Hour Pricing will move to 4:30 – 7:00 PM Tuesday – Friday

We will continue the Sunday menu however on the LAST SUNDAY of each month we will offer a Sunday Brunch Buffet

*We ask that you continue to wear face covering inside the clubhouse but they are not required. Social Distancing, hand sanitizer, washing of hands are all still important and should be practiced by all using the club.*

## Reminder Notes:

We should be completed with the sod project on hole #10 weather permitting mid next week. We will ask that you do not drive your golf carts or play shots from the newly laid sod until it is fully grown in.

Remember it is your course. Please help us with repairing your ball marks on the greens, filling your divots in the fairways and remain at least 10 yards from greens and tees with golf carts.

Since Covid -19 and single cart ridership we have seen more cart traffic related damage throughout the course. Help us to scatter the carts and avoid the high traffic areas until we get into full growing season

Once the #10 sod project is completed we will start work on selected greens to remove contaminated sub-surface soil to develop better growing conditions. These repairs will be primarily on green edges on holes #1, #3, #4, #9, #15 and #16. Turf will be stripped and the sub surface soil will be re-placed with fresh soil and then re-sodded.

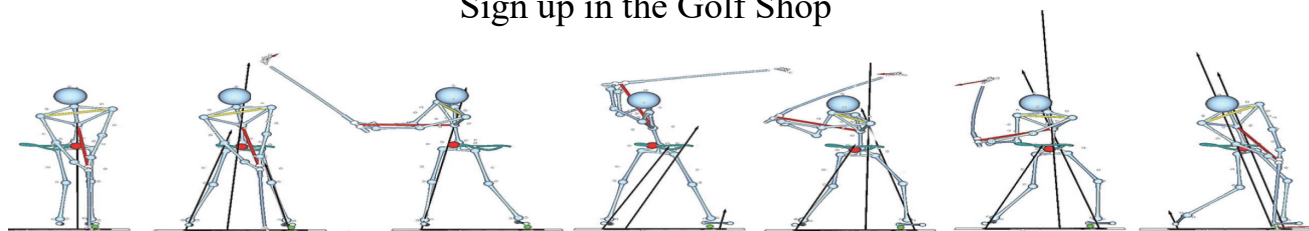
We plan to Aerify greens on April 26<sup>th</sup> and 27<sup>th</sup>



## ~ Player Development ~

9363

Sign up in the Golf Shop



### April

**Sat April 3rd**

**Sat April 10th**

**Sat April 17th**

**Sat April 24th**

---

### HOLE-IN-ONE CLUB REMINDER!

The Golf Shop offers a Hole-in-One Club to our golfing Members that is FREE to join.

In the event one of the Members in the club makes a Hole-in-One with at least two witnesses each member is billed \$5. The total amount billed gets credited to the lucky persons credit book account in the golf shop. To sign up stop by or call the Golf Shop at 729-4182 and we will be happy to add your name to the club so when you hit that perfect (or lucky) shot, it will be even more rewarding.

---

## Course Update~ Derick Hashimoto

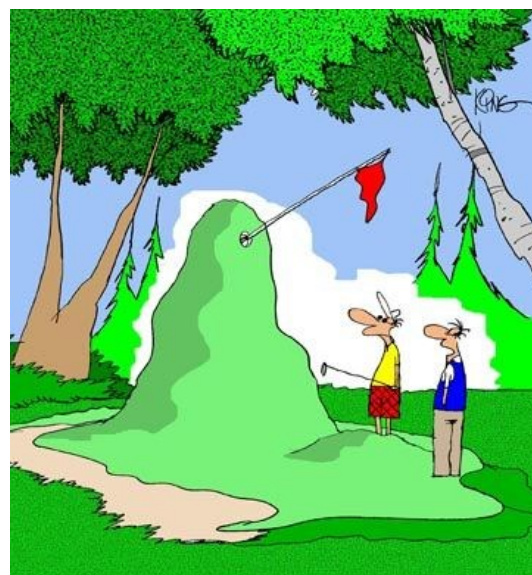
---

April is here and we are finishing up the sod work on 1 and 10 with platinum paspalum. We will continue to roll and topdress for the next few weeks to make it a smooth as possible. We will also conduct our spring greens aerification on April 26 & 27. This will be a full core aerification.

We will also continue to work on these high focus areas:

- Removal of the St. Augustine grass from the playing areas. This will be a slow process before it is all gone but we are working towards that goal.
- We will continue to manage traffic control ropes in the playing area to assist with the grow in

Finally, we need your help in assisting us with cart traffic. With the single cart use program, we are seeing more areas on the course showing signs of the additional cart traffic. PLEASE avoid weak areas and PLEASE observe all cart rules throughout the course.



*"I hear this is one of the tougher greens to putt on."*





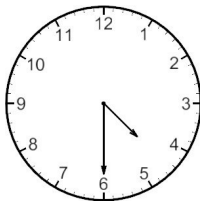
Easter Sunday  
April 4th

### Did You Know?

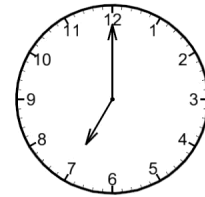
The first golf balls were made of thin leather stuffed with feathers. Tightly-packed feathers made balls that flew the farthest and they were used until 1848.



Earth Day  
April 22nd



Copper Room Bar  
Happy Hour  
4:30pm-7pm



Socialize with your fellow Members & Guests.





## Chef Gordon

Spring is in the air. We are working on New Menu items and bringing back our Weekly Lunch Buffet. Also our Sunday Brunch Buffet will be the last Sunday of the month. Make your Reservations in advance..

Thank you for your continue support.

From Chef Gordon and all the Kitchen Staff. Happy Easter!



## Dining Reservations

### Copper Room Dining Reservations and Curbside Pick Up

Monday — Closed

Tuesday — Dine in 11am-3pm \* Curbside 11am-3pm Only Kitchen Closes at 3pm

\* Copper Room Bar 11am-7pm

Wednesday — Dine in 11am-3pm Only. Curbside 11am-7pm Order must be place by 5:30pm.

Pick Up no later than 6pm \* Copper Room Bar 11am-7pm

Thursday — Dine in 11am-8:30pm. Curbside 11am-7pm Order must be placed by 5:30pm

\* Copper Room Bar 11am-8:30pm

Friday — Dine in 11am-8:30pm. Curbside 11am-7pm Order must be placed by 5:30pm

\* Copper Room Bar 11am-8:30pm

Saturday — Dine in 11am-8:30pm. Curbside 11am-7pm Order must be placed by 5:30pm

\* Copper Room Bar 11am-8:30pm

Sunday Brunch — No Curbside or To Go. Dine in Only 10am-2pm

\* Copper Room Bar 10am-7pm

### Curbside Pick Up & Delivery

Let us Do the Cooking for You.

Delicious Weekly Specials & All of Your Favorite Menu Items.

Place Your Order and Drive Up to the Front Entrance. We will bring it out to your vehicle.

Delivery Within the Country Club Estates Thursday—Saturday after 5pm

361-729-8324 #2 bdickson@rockportcc.com



Beverly Dickson

Administrative Assistance  
Day  
April 21st



Reminder to always check your receipt when making purchases. Your name and member number should always match.

Take a moment to double check. log into the website at [Rockportcc.com](http://Rockportcc.com) to view your statement.

Any adjustments are made at the end of each month.

If you have any questions

Contact Diane

Sign up for EZ-Pay . This saves Trees and Postage

Contact:

Diane Hipp

Director of Finance &  
Operations

361-729-8324

[dhipp@rockportcc.com](mailto:dhipp@rockportcc.com)

## Membership Update

---

Please join me in welcoming our new members of the club. We love seeing new faces at the club. I am always available if you need anything. It makes my day to see a happy member. Enjoy your club and one another.

### New Members

Chuck & Elizabeth Nash

Chris & Bettie Boyd

Edward & Yvonne Patton

Robert Hopkins & Terri McElroy with Harley & Haylen

Lewis & Kathy Aven

Bradlee Cole and Shelly-Ann Manning with Zay

George "Tripp" and Elizabeth "Blew" Green III

Gibson McGuire

### Seasonal

Forrest & Debbie Chadwick

Gary & Anna Wren



Bruce & Marina Jefferis



### Membership

Contact: Chris DeLoach

361-450-4393

[cdeLoach@rockportcc.com](mailto:cdeLoach@rockportcc.com)



## FITNESS CENTER

---

Rockport Country Club offers its membership four state of the art tennis courts. In addition to tennis, club members enjoy a junior Olympic size swimming pool and state of the art, expanded fitness facilities with all new equipment. These facilities offer Rockport Country Club members group and private events that include tennis tournaments and leagues, birthday parties, private parties and other various programming to fit an active lifestyle.

## Special Events & Banquets~ Karen Hernandez

---



**For All Your Private Events.**

**Contactless Catering & Event Planning**

Contact:

Karen Hernandez

Event Coordinator

361-729-8324

[khernandez@rockportcc.com](mailto:khernandez@rockportcc.com)



# April 2021 Dining

Reservations 361-729.8324 #2  
bdickson@rockportcc.com



WiFi  
Guest Password :  
TheRock8324

Sun	Mon	Tue	Wed	Thu	Fri	Sat
	1 CLOSED	Lunch Buffet is Back! 11am-2pm Tuesday—Saturday Beginning April 6th		1 Lunch 11am-3pm Dinner 4pm-8:30pm Curbside 11am-7pm Copper Room Bar 11am-8:30pm	2 Lunch 11am-3pm Dinner 4pm-8:30pm Curbside 11am-7pm Copper Room Bar 11am-8:30pm	3 Lunch 11am-3pm Dinner 4pm-8:30pm Curbside 11am-7pm Copper Room Bar 11am-8:30pm
4 Easter Brunch Buffet	5 CLOSED Gold Star Spouses Day	6 Dining Hours Lunch 11am-3pm Only Copper Room Bar 11am-6pm	7 Dining Hours Lunch 11am-3pm Only Dinner 4pm-6pm Curbside Only Copper Room Bar 11am-6pm	8 Fried Chicken Night Buffet	9 Lunch 11am-3pm Dinner 4pm-8:30pm Curbside 11am-7pm Copper Room Bar 11am-8:30pm	10 Lunch 11am-3pm Dinner 4pm-8:30pm Curbside 11am-7pm Copper Room Bar 11am-8:30pm
11 Sunday Brunch 10am—2pm	12 CLOSED	13 Dining Hours Lunch 11am-3pm Only Copper Room Bar 11am-6pm	14 Dining Hours Lunch 11am-3pm Only Dinner 4pm-6pm Curbside Only Copper Room Bar 11am-6pm	15 Bayou Night	16 Lunch 11am-3pm Dinner 4pm-8:30pm Curbside 11am-7pm Copper Room Bar 11am-8:30pm	17 Lunch 11am-3pm Dinner 4pm-8:30pm Curbside 11am-7pm Copper Room Bar 11am-8:30pm
18 Sunday Brunch 10am—2pm	19 CLOSED	20 Dining Hours Lunch 11am-3pm Only Copper Room Bar 11am-6pm	21 Dining Hours Lunch 11am-3pm Only Dinner 4pm-6pm Curbside Only Copper Room Bar 11am-6pm	22 Greek Night	23 Lunch 11am-3pm Dinner 4pm-8:30pm Curbside 11am-7pm Copper Room Bar 11am-8:30pm	24 Lunch 11am-3pm Dinner 4pm-8:30pm Curbside 11am-7pm Copper Room Bar 11am-8:30pm
25 Sunday Brunch Buffet 10am—2pm	26 CLOSED	27 Dining Hours Lunch 11am-3pm Only Copper Room Bar 11am-6pm	28 Dining Hours Lunch 11am-3pm Only Dinner 4pm-6pm Curbside Only Copper Room Bar 11am-6pm	29 Prime Rib Night	30 Lunch 11am-3pm Dinner 4pm-8:30pm Curbside 11am-7pm Copper Room Bar 11am-8:30pm	



# April 2021 Golf

## 361-729.8324



WiFi  
Guest Password :  
TheRock8324

Sun

Mon


Tue

Wed

Thu

Fri

Sat

				1	2	3
4 Happy Easter Ladies Match Play	5 CLOSED Gold Star Spouses Day	6	7 LGA~9am	8 MGA 9am Shotgun	9 Ladies Match Play	10 Player Development Clinic 10:00 - 11:00 AM at Driving Range Ladies Match Play
11 Ladies Match Play	12 CLOSED	13	14	15 Area 8 AGC 1pm Shotgun	16	17 Player Development Clinic 10:00 - 11:00 AM at Driving Range MGA 9am
18	19 CLOSED	20	21 LGA~9am	22 	23	24 Player Development Clinic 10:00 - 11:00 AM at Driving Range
25 Couples Tournament 1pm Shotgun	26 CLOSED Greens Aerification	27 CLOSED Greens Aerification	28 LGA~9am	29	30	