



Message from the President—Craig Bohn

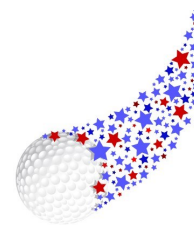
July was a wild and crazy month for RCC. Twenty plus inches of rain really had an impact on RCC and the community. As you may know we have a storm water drainage contract with the City of Rockport. In this contract it requires the city to maintain all aspects of the drainage system. Over the years we believe that the city has failed to maintain the drainage system to proper standards. We are working with the RCC HOA to join forces to convince the city to honor their part of the contract. The RCC Board of Directors has assigned Jeanne (Arnold) Hooker the duty of working with the city to resolve some of these maintenance issues.

After the recent rain event, Rick DeLoach, Jeanne Hooker, myself and other RCC members and RCC residents attended a city council workshop meeting that we were able to outline what we believe to be the most critical issues with the drainage system. We also had a tour with Ward 4 council person Andrea Hattman, to show her the various issues we are facing with the drainage pathways. These drainage issues are NOT a golf course problem rather a community problem.

Only time will tell if the city fulfills their obligations on the needed repairs. I believe that we are being heard and that they will start to honor their obligations. Feel free to contact your Ward 4 council person to express your concern at ward4council@cityofrockport.com or 361.729.2213 ext. 221. We will keep you posted on the progress.

Finally, I would like to thank Jeanne for making the presentation on behalf of RCC and hopefully the city officials got the message.

As always, thank you for your continued support



Message from the GM~ Rick DeLoach

One of the on-going subjects that come up around the club is member / guest "Dress Code". While we want to create a casual and relaxed atmosphere there are guidelines set forth and approved by the Board. We could always be better at enforcing these guidelines but I felt it was time to communicate again one of the basic guidelines. Below is point #5 in our club Rules and Regulations:

Attire. *The club is located in a community known for its casual, inviting, and outdoors atmosphere. It is the club's intent to reflect this atmosphere as most inviting to members and guests. Consistent with this intent, the following guidelines shall apply to attire. Proper attire is required at all times in the public areas of the clubhouse. Casual clothing for both day and evening wear is acceptable, including suitable golf and tennis attire, for both ladies and gentlemen. However, cutoffs, pants with patches or holes, bathing suits, halter tops, tank tops and other comparable clothing are not acceptable. Shoes or other appropriate footwear are required of all members and guests in all areas of the clubhouse. Appropriate hats/caps may be worn in the clubhouse, but must be facing forward at all times. Men may not wear hats/caps in the banquet room and during special club functions and private events, except when special circumstances make them appropriate. Further, men may not wear hats in the member dining area at dinner time (after 5:00 PM). Children are required to conform to the same dress code as adults. Members are responsible for advising their guests of the appropriate attire while visiting the club and for any events. Members should not confront any other member or guest at the club and make any comments about possible attire non-compliance. Rather, they should discretely bring the matter to the attention of management on duty and allow management to address the situation.*

The club Rules and Regulations may be found on the website or the Admin staff will be happy to print a copy for you upon request. Thank you in advance for knowing these Rules and helping us to better manage the club.

Recent Flooding at RCC

We all know about the recent rains and floods in Rockport. What you may not know is that Rockport Country Club has a storm water drainage contract with the city of Rockport. This contract outlines the specific responsibilities the city has that includes the maintenance of the drainage system.

We have had on-going discussions with City representatives about our concerns with no required action on their part. The drainage system is designed to collect runoff water from the community and we all saw the end result of the lack of maintenance to the system.

The entire community needs to stand up and contact your local council person for Ward 4 and voice your concern. There is approximately 650 homes in the RCC community. That's some serious tax dollars and votes! Did you know that approx. 32% of Rockport Country Club residents are actually members of the country club? Again, this is not a country club problem but a community problem!

We are working with the Rockport Country Club HOA and their Board of Directors to make a difference. We also need for you to talk with your neighbors who are not members of the club and reach out to our local council person to express their concern. Below is the contact information should you elect to call or email your local representatives.

City Council Ward 4—Andrea Hattman / ward4council@cityofrockport.com / 361.729.2213
Mayor—Pat Rios / mayor@cityofrockport.com / 361.729.2213

Swimming Pool Update

Recently we contracted American Leak Detection to come out to identify possible leaks we had at the pool. As it turns out there are multiple leaks around the skimmers that need to be repaired. As a result we have had to add water and chemicals on a daily basis keep the water some what clear. We have scheduled the repairs August 8th & 9th. We will be closing the pool on August 8th & 9th to make the necessary repairs.

Golf—Thane Emerson

NEW COURSE RATINGS AND SLOPE RATINGS

The new course ratings are in effect now as the golf course was recently re-rated by a four person rating team sent in by the Texas Golf Association who administers the GHIN System for the State of Texas. The USGA requires that all courses are rated every ten years to stay current as a recognized USGA Course. Our new score-cards will reflect the new ratings when they come in the near future. The new ratings are listed below:

<u>WOMEN</u>	New Course Rating/Slope Rating
Red Tees	68.4/123
Silver Tees	64.8/109

<u>MEN</u>	
Blue Tees	72.5/132
White Tees	69.0/128
Gold Tees	66.3/117
Red Tees	64.8/111
Silver Tees	62.3/106

UPCOMING GOLF EVENTS REMINDER!

The Fall Member-Member will be held September 11th & 12th.
The format will be One Best Ball Net of the Twosome both days.
Flights for Ladies and Men. The number of flights will be determined by the number of entries.

The RCC Member-Guest Tournament will be held September 17th, 18th & 19th.
Format for this three day event will be Fourball 9 Hole Match Play. Each flight will consist of 6 two man teams with each team playing one 9 hole match against the 5 other teams in the flight. More detailed information soon as final details and agenda are being worked out.

TOURNAMENT RESULTS

RED, WHITE & BLUE SCRAMBLE – JULY 4TH 114 Players Participated

FIRST FLIGHT

1 ST Place Gross	Greg Barton, JT Barton, Tyler Barton & Ed Patterson	55
2 nd Place Gross	Richard Takac, Sherry, Takac, Zander Takac & JP Jones	55
1 st Place Net	Mike Hord, Jack Ort, Randall Harris & Chip Lee	43
2 nd Place Net	Jerry Foust, Dennis Parker, Vic Giroux & Wes Neesham	44

SECOND FLIGHT

1 ST Place Gross	Stephen & Caroline Bradford, Weldon & Kristen Dietze	62
2 nd Place Gross	Jeff & Bilinda Hulse, Mike & Amy Sievert	63
1 st Place Net	Linda Collins, Stephanie Redding, Alan & Katy Prigge	43
2 nd Place Net	Lee & Lana Sandell, Ron Tatsch & Erik McDonald	44

Calculating Your Maximum Hole Score

The Golf Shop Staff enters scores turned into the Golf Shop hole-by-hole so the Maximum Hole Score is calculated automatically. Players that enter their own scores are encouraged to do so hole-by-hole as opposed to total score. The following article explains the Maximum Hole Score calculation under the World Handicap System for all scores entered into the GHIN system.

Net Double Bogey is the maximum hole score under the World Handicap System™

What Is Net Double Bogey?

Net Double Bogey is the maximum allowable hole score for handicap purposes.

The procedure is typically applied after the round and before a score is posted. However, when the format of play allows, or when playing a recreational round, you can pick up once you've reached your Net Double Bogey limit.

Net Double Bogey prevents the occasional bad hole from impacting your Handicap Index too severely.

How Is Net Double Bogey calculated?

Net Double Bogey –

Double Bogey +/- any handicap strokes received on a hole (minus applies to plus-handicap players)

If you post hole-by-hole scores, the Net Double Bogey adjustment should be applied automatically.

Can I see an example?

A player with a Course Handicap™ of 10 can post a maximum hole score of **Double Bogey +1** on holes allocated 1 through 10 on the scorecard (denoted with red ●). The max score on all other holes is Double Bogey.

Hole	1	2	3	4	5	6	7	8	9	OUT
Yardage	333	133	375	490	333	378	155	416	357	3030
Par	4	3	4	5	4	4	3	4	4	35
Stroke Index	3 ●	17	8 ●	1 ●	11	7 ●	15	2 ●	10	
Player A	4	4	5	6	4	5	3	4	4	39

Hole	10	11	12	13	14	15	16	17	18	IN
Yardage	341	150	330	131	471	323	314	375	340	2807
Par	4	3	4	3	5	4	4	4	4	35
Stroke Index	8 ●	16	9 ●	18	2 ●	10 ●	14	4 ●	12	
Player A	4	4	8	4	6	4	4	5	5	44

Front 9	39
Back 9	44
Total	83
1	
Adjusted Score	82

The player's score of 8 on the 12th hole would be reduced to a 7 for handicap purposes. This is because their Net Double Bogey maximum was **Double Bogey +1**, which on a Par 4 = 7. The score for the competition is 83, but the score for handicap purposes is 82.

What If my Course Handicap Is above 18?

If your Course Handicap is between 19 and 36:

Triple Bogey is your baseline – post up to **Triple Bogey +1** on holes with stroke index values less than or equal to your **Course Handicap – 18**.

If your Course Handicap is between 37 and 54:

Quadruple Bogey is your baseline – post up to **Quadruple Bogey +1** on holes with stroke index values less than or equal to your **Course Handicap – 36**.

For more information or to learn more about the WHS, visit usga.org/whs

WORLD HANDICAP SYSTEM
R&A USGA

LGA~ Betty Lamb

The LGA would like to welcome our newest LGA member, Mary Leonard. Thank you Mary for being a part of the LGA. If you're a new member or just haven't been playing golf lately, come out and join the fun. You may sign up in the Golf Shop. If your interested in joining the LGA, contact Thane Emerson (Head Golf Professional) or one of the LGA board members and they will direct you through the process. BONUS membership fee for 2021 (Beginning in July) is only \$15.00.

August games will be Low Gross/Net/Putts on August 4

Ones on August 11

Crisscross on August 18

Team Scramble on August 25

Saturday Play Days will be on August 7 and August 28. Tee time is at 9:00 and we ask you to be there at 8:30. Call or stop by the Golf Shop to sign up.

Golfer of the Month for July is Shelley Gatlin! Kudos to Shelley!!

Now is the time to find your partner for RCC'S Fall Member/Member Tournament, scheduled for September 11 & 12. Stay hydrated, the dog days of summer are upon us!



Ladies Nine Hole Golf – “The Niners”

Ladies if you are interested in a nine hole non-competitive round of golf RCC has what you are looking for. The Niner's, as they call themselves, play only nine holes with a primary focus on just having fun and making new friends.

If you are interested please contact Barbs Meader at 361.205.6606

or Jeanne Hooker at 512.585.4019.

RCCLA~ Rhoda Collier

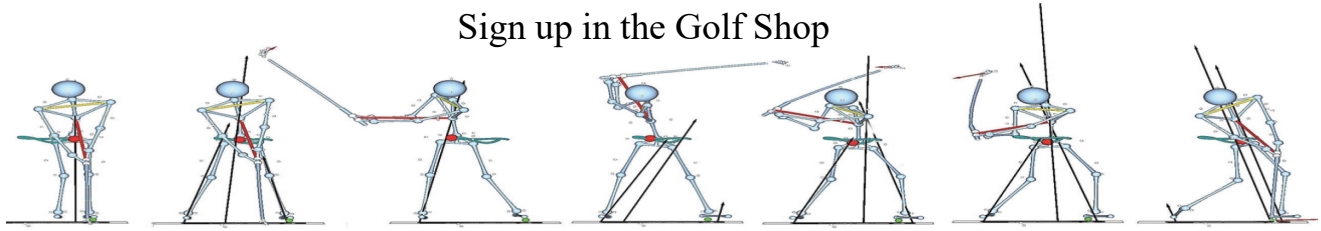
THE BOARD IS PLANNING AN EXCITING MEETING FOR SEPTEMBER. WATCH FOR MORE INFORMATION IN THE NEXT NEWSLETTER. WE ARE ASKING ALL TO BRING ONE OR MORE GUESTS THAT CAN BE POTENTIAL NEW MEMBERS OR MEMBERS WHO HAVE NOT ATTENDED A RCCLA MEETING FOR A LONG TIME. HELP US GROW OUR MEMBERSHIP AND TO MAKE A POSITIVE IMPACT AT THE CLUB AND COMMUNITY.

PUT YOUR THINKING CAP ON NOW. THERE WILL BE MORE INFO NEXT MONTH.

THANK YOU AND SEE YOU ALL SOON

Player Development

Sign up in the Golf Shop



August

Sat August 7th 10:00 am

Sat August 14th 10:00 am

Sat August 21st 10:00 am

Sat August 28th 10:00 am



HOLE-IN-ONE CLUB REMINDER!

The Golf Shop offers a Hole-in-One Club to our golfing Members that is FREE to join.

In the event one of the Members in the club makes a Hole-in-One with at least two witnesses each member is billed \$5. The total amount billed gets credited to the lucky persons credit book account in the golf shop. To sign up stop by or call the Golf Shop at 729-4182 and we will be happy to add your name to the club so when you hit that perfect (or lucky) shot, it will be even more rewarding.

Course Update~ Derick Hashimoto

July was a very wet month for us. The rain event of July 6-8 resulted in about 24 total inches. While rain is a good thing that much rain also has negative effects. It completely flushes the soil of any pre-emergent and nutrients you have established to prevent weeds and promote healthy turf growth.

For the next few weeks we will be playing catch up on mowing and some of the other details we were not able to address during the wet period. We will also be applying a post emergent herbicide to address the weed problem. Soon you will start to see the effects of the weeds dying and some off color spots on and around the course.

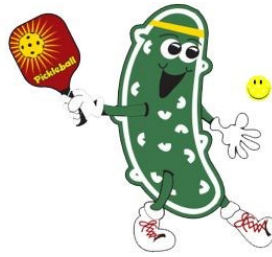
On August 9th & 10th we will be completing our last greens core aerification of 2021. We will be using a smaller "3/8 inch" tine. This promotes less stress on the greens and a quicker recovery. In addition with the excessive heat expected in August you will also see more irrigation running throughout the day. This process is used to fight against hot spots during the hot summer months.

One of the on-going challenges using this process is creating wet spots on the course during the day. Help us avoid the low areas that may hold water.



"Before you replace your divot, I'd like to get a photo of you with it. That has to be a world's record."

Pickleball



Pickleball Participants

Each Monday at 6:30 PM Pickle ball players are encouraged to meet at the tennis courts for fun and games. Remember we have rental rackets and ball in the golf shop if you need them. If you would like to be on the Pickleball email list notify Chris DeLoach at cdeloach@rockportcc.com

MAH JONGG UPDATE

Mah Jongg Playday—RCC Members Only

Last Friday of every month

Next Play Date Friday, August 27th

July Winners

Congratulations!

1st Place – Sherilyn Hunt, 195 points (3 rounds)

2nd Place – Beverly Robinson, 175 points (3 rounds)

3rd Place - Barbara Smyth, 160 points (3 rounds)

Mah Jongg playday is the last Friday of every month from 1pm– 4pm (3 rounds) and the cost is \$5 with all monies going to the prize pot. Please contact Sherilyn Hunt at 361.816.1327 or sherilynhunt@stx.rr.com if you would like to play or be put on email list. Notices are sent out a week in advance, NEXT PLAYDAY IS AUGUST 27TH

Dinning Reservations

Copper Room Dining Reservations and Curbside Pick Up

Monday — Closed

Tuesday — Dine in 11am-3pm Only* Curbside 11am-3pm Only. Kitchen Closes at 3pm

* Copper Room Bar 11am-7pm

Wednesday — Dine in 11am-3pm Only. Curbside 11am-3pm Only. Kitchen Closes at 3pm

* Copper Room Bar 11am-7pm

Thursday — Dine in 11am-8:30pm. Curbside 11am-7pm Order must be placed by 5:30pm

* Copper Room Bar 11am-8:30pm

Friday — Dine in 11am-8:30pm. Curbside 11am-7pm Order must be placed by 5:30pm

* Copper Room Bar 11am-8:30pm

Saturday — Dine in 11am-8:30pm. Curbside 11am-7pm Order must be placed by 5:30pm

* Copper Room Bar 11am-8:30pm

Sunday Brunch — No Curbside or To Go. Dine in Only 10am-2pm

* Copper Room Bar 10am-7pm

*



Please remember to contact the club if you decide to cancel your reservation. Help us give your spot to another member. By not cancelling your reservation it only cost you money.

Curbside Pick Up & Delivery

Delicious Weekly Specials & All of Your Favorite Menu Items.

Place Your Order and Drive Up to the Front Entrance. We will bring it out to your vehicle.

Delivery Within the Country Club Estates Thursday—Saturday after 5pm

361-729-8324 #2

Reminder to always check your receipt when making purchases. Your name and member number should always match.

Take a moment to double check. log into the website at Rockportcc.com to view your statement.

Any adjustments are made at the end of each month.

If you have any questions

Contact Diane

Sign up for EZ-Pay

This saves Trees and Postage

Contact:

Diane Hipp

361-729-8324

dhipp@rockportcc.com



Please say Welcome and Hello to our Newest Members of the Club!

Contact Chris DeLoach
cdeloach@rockportcc.com

Ronald Miltenberger & Catherine Thompson

John & Karen Mathews

James & Brenda Crump

Steven Grigg

Joshua & Amy DeVillier and son Jack

Susan White & Steven Guess

James & Cynthia Martin

Paulina, Claudia, George & Derek Irish

Chris & Lisa Ostby

Dean & Jennifer McDaniel with Grant, Mia & Ava

Mike & Pamela Frost

James & Celina Borden

Brandon & Tammy Rains

Jason & Amy Goode w/ daughter Sara

Kenny & Patsy Owens

James & Keri Patterson w/ sons Case, Conner



Chris & Lisa Ostby



Steven Grigg



James & Cynthia Martin



James & Brenda Crump

RCC Will SUSPEND the Weekday Lunch Buffet for the month of August. Many of our members are traveling this time of year which slows down the business. We will resume the buffet later in the fall.—Thank you

Special Events & Banquets~ Karen Hernandez

As you may know the restaurant industry has really been hit hard throughout the US with the labor pool shortages. Rockport is no exception. Take a look around town. Everyone is looking for help?

I would like to take a moment to thank you to our staff for their efforts on a daily basis.

Throughout the U.S. Restaurant purveyors are having issues. For example there are not enough truck drivers to get the product from manufactures to distribution centers. This by itself has caused random items to not be available from one week to the next. Needless to say the price increases across the board. I'm sure you have noticed them at the grocery store. In addition to the trucking issues, manufacturers are suffering the same problems with labor.

We will continue to give our members the best dining experiences as possible. You, the members are the heart and soul of RCC and remain our focus.



Contact:

Karen Hernandez

Event Coordinator

361-450-4392 or

817-994-7355 (c)

khernandez@rockportcc.com

August 2021 - Dining
Call 361.729.8324 #2 for Reservations or
Email: reservations@rockportcc.com

Sun	Mon	Tue	Wed	Thu	Fri	Sat
1 Sunday Brunch 10-2	2 Club Closed	3 Lunch Served 11-2	4 Lunch Served 11-2	5 Lunch Served 11-2 Dinner Served 5-8	6 Chef Special TBA Dinner Served 5-8	7 Chef Special TBA Dinner Served 5-8
8 Sunday Brunch 10-2	9 Club Closed	10 Clubhouse Closed Today	11 Lunch Served 11-2	12 Lunch Served 11-2 Dinner Served 5-8	13 Chef Special TBA Dinner Served 5-8	14 Chef Special TBA Dinner Served 5-8
15 Sunday Brunch 10-2	16 Club Closed	17 Lunch Served 11-2	18 Lunch Served 11-2	19 Lunch Served 11-2 Fried Chicken Night	20 Chef Special TBA Dinner Served 5-8	21 Chef Special TBA Dinner Served 5-8
22 Sunday Brunch 10-2	23 Club Closed	24 Lunch Served 11-2	25 Lunch Served 11-2	26 Lunch Served 11-2 Dinner Served 5-8	27 Chef Special TBA Dinner Served 5-8	28 Chef Special TBA Dinner Served 5-8
29 Sunday Brunch 10-2	30 Club Closed	31 Lunch Served 11-2				

August 2021—Golf Operations

Call 361.729.4182 for Tee Times

Sun	Mon	Tue	Wed	Thu	Fri	Sat
1	2 Club Closed	3	4 LGA Playday 9:00 shotgun	5	6	7 Player Development 10am-11am LGA Playday
8	9 Club Closed for Aerification	10 Club Closed for Aerification	11 LGA Playday 9:00 shotgun	12	12	14 Player Development 10am-11am
15	16 Club Closed	17	18 LGA Playday 9:00 shotgun	19 MGA Tournament 9:00 Shotgun	20	21 Player Development 10am-11am
22	23 Club Closed	24	25 LGA Playday 9:00 shotgun	26	27	28 Player Development 10am-11am MGA/LGA Playday
29	30 Club Closed	31				