

The Rock Newsletter

Message from President~ Craig Bohn

On Saturday, March 28th the RCC Board of Directors completed the Annual Meeting. I'm sorry that all could not attend but I think you all understand why it was a closed meeting. It was just not possible to conduct the meeting and adhere to the rules in place on Social Distancing.

Congratulations to Jerry Foust, Arno Penshorn and Jeff Hulse as your new Directors for 2020. Below is a breakdown of the Officers and Committee chairs for this year.

Craig Bohn – President
Elyce Kahn – 1st Vice President
Red Hunt – 2nd Vice President
Charles Marsh – Secretary / Treasure

Golf Committee
Red Hunt (Chair)
Jerry Foust

Membership Committee
Arno Penshore
Glenn Kliebert
Charles Marsh

House Committee
Elyse Kahn (Chair)
Arno Penshore
Jeff Hulse

Greens Committee
Bruce Hood (Chair)
Jeff Hulse
Arno Penshore

Swim / Tennis / Fitness
Jerry Foust
Glenn Kliebert



Message from the GM~ Rick DeLoach

March has been quite the month. RCC and our nation have seen many changes this month and hopefully it will be behind us soon. We have been forced to make many difficult decisions that hopefully will only be short term and soon things can get back to normal.

Meanwhile, as a reminder, all Food and Beverage is "Take Out" only until further notice and we are now offering In-Club Delivery Thursday – Saturday. Both actions have taken off very well and as you know, we are taking every step possible to generate revenue for the club and at the same time keeping as many of our current staff employed as possible.

Not knowing how long this will all last, we ask for your continued support by playing golf and placing those TO GO orders. Unlike Hurricane Harvey, we will not be receiving business interruption insurance proceeds from this pandemic.

Please stay current with the club updates by checking your emails. It is critical that we all continue to adhere to the guidelines set forth by our National, State and Community leaders.



Golf Operations~ Thane Emerson

These times certainly are unprecedented in this lifetime and has required all of us to change our habits and accept some inconveniences due to the Covid-19 Virus. We certainly appreciate everyone's cooperation in the changes we have had to implement at the Club for the benefit of all Members and Staff.

Our Tournament schedule has been derailed as well and will require pushing our spring major events into summer and fall dates. The Golf Committee will be determining a new schedule as soon as things begin to return to normal.

However on the bright side, it is great to see so many of you still getting out on the course and enjoying the opportunity to get some fresh air and to get to play the game of golf.

Course Update~ Derick Hashimoto

I guess by now most of you have noticed some changes on the golf course like, no bunker rakes, plugs in the cups, and no water coolers just to name a few. As we move forward through this pandemic we will continue to utilize the best practices offered by the PGA of America, the USGA, the Superintendent's Association of America, and various other industry organizations.

In April, we will begin verticutting greens and have scheduled our first greens aerification on April 27th and 28th. You will also start to see more mowing taking place as our grass has finally started growing with the warmer weather.

You will also see more traffic control ropes on the course. There are numerous spots on the course that need special attention. We will start roping these areas off in efforts to keep cart traffic away from these areas so we can have a better chance of re-establishing turf. Please help us avoid these areas with your carts until they have grown in.



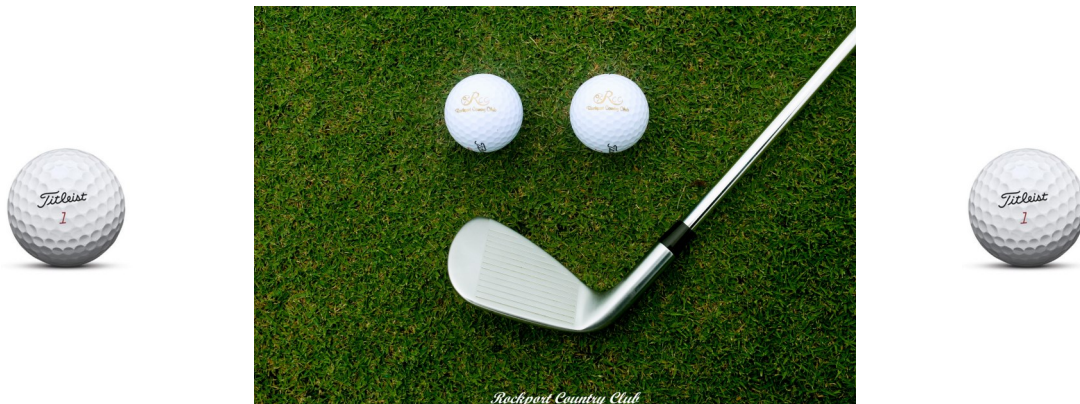
FITNESS CENTER



Fitness Center is closed until further notice as required by state and local officials.

Swimming and Tennis are still open with the understanding that you must practice social distancing while using the facilities.

BRAGGING RIGHTS!



27th ANNUAL SPRING MEMBER-MEMBER TOURNAMENT MARCH 7 & 8, 2020 RESULTS

LADIE'S FLIGHT		<u>SCORE</u>
1 ST	Eunice Hellums/Johnie Bosworth	73+107=180
2 ND	Charlotte Sherman/Susan French	72+169=181
3 rd	Barbara Poth/Cynthia Bryson	75+108=183

LADIE'S SILVER FLIGHT		
1 ST	Ann Barkley/Shirley Hartnett	75-108=183
2 nd	Linda Bohn/Bonnie Reilly	88+105=193

MEN'S WHITE TEE FLIGHT		
1 ST	Jeff Atteberry/Dan Holitzke	72+110=182
2 nd	Keith Gibson/Chuck Schwing	69-114=183

MEN'S GOLD TEE FLIGHT		
1 ST	Jeff Hulse/Red Hunt	68+105=173
2 nd	Dennis Verthein/Jim Ryan	72+106=178
3 rd	Bob McCann/John Firmstone	76+109=185

MARCH HOLE-IN-ONE'S

CONGRATULATION'S GO OUT TO

CHARLOTTE SHERMAN #7 March 3rd

~~~

RED HUNT #3 March 26<sup>th</sup>





## MGA~ President Jeff Hulse

---

The MGA held its Annual Banquet on Tuesday, March 10th. 106 members and spouses attended the event.

The MGA would like to thank Red Hunt who was our President this past year. We appreciate his leadership, commitment, and service. The new President is Jeff Hulse who moves into this position after serving as the Vice President for a year. The MGA's new Vice President is Ed Patterson.

March 14th the MGA had 21 participants in a 1-2-3 low net Tournament. There were 7 teams of 3 players.

First Place Team with a 123 Score was:

Tommy Wright

Chuck Robinson

John Landry

Second Place Team with a 124 score was:

Ed Patterson

Scott Bibeau

David Woods

There have been several MGA and RCC Tournaments cancelled this past month due to COVID 19. Please keep a watchful eye out for those Tournaments to be re-scheduled at later dates and posted on our RCC online calendar.

As members and ambassadors of RCC, we are extremely fortunate that we can continue to play. Please respect social distancing guidelines. Stay Safe.



## LGA~ President Betty Lamb

---

Obviously, March didn't quite turn out as planned due to COVID-19. The April 14 and 15 Sandbox Tournament was rescheduled for September 15 and 16. LGA Match Play scheduled for April 3, 4 and 5 was canceled. Nevertheless LGA Play Days continue - practicing social distancing, one person per cart, exchanging no money but instead giving a rousing round of applause for the winners. Refer to the RCC Ladies Play Schedule for regular Play Days planned for April. The Sandbox Tournament event will be replaced by a regular Play Day with a Match Play format. And lastly, but certainly not least, congratulations go to Charlotte Sherman for a Hole-in-One on No. 3 on March 31. Way to go Charlotte!!!



## RCCLA~ President Mary Lynn Rhodes

---

Well, we are definitely living in a new era. The last time our lives were this disrupted, not counting Hurricane Harvey, I think might be September 11<sup>th</sup>. Tom and I happened to be in the air on our way to South Carolina when that happened. I am so glad that we are home now.

Our year of programs and such have been cut short, as if you did not already know. Our trip to Goliad had already been paid for so that trip will be rescheduled for next spring probably.

Our nominating committee is working to complete our new Board. If you are interested in serving on the Board or a committee next year, please call me or Dede Valenti. This group has been great to work with. Getting to know new people and be an integral part of our Rockport Country Club has been rewarding. Since we cannot meet at this time, the new Board will be voted in absentia. We hopefully will be able to have our last meeting in May, and the new Board will be installed. If that is not possible, then it will be done as soon as possible.

The summer will be the time for the new Board to plan for the new year of our organization that will officially start in September. Hope that all of you are safe, healthy, and not going totally crazy. May the next couple of months bring us to the end of this horrible COVID 19.

## Membership Update~ Stan Reeder

Due to the coronavirus and the current Stay in Place orders there is not a lot to talk about this month. This time will pass and we will once again see the new faces around the club. It is however a good time to discuss the real value of a membership.

This is a difficult time for the club in many aspects. But we can still enjoy the benefits of getting out for a round of golf, a game of tennis or a relaxing day around the pool soaking up some sunshine. More importantly, the club is your outlet, your second home. It's an opportunity to get out and put the world behind us and enjoy some friends...at a safe distance or course.

Because of the social networking of a club you have people you can count on. If you need something or just need to talk you have friends at the club you can count on. The same goes for the club itself. Don't go without. If you need something maybe the club can help. Need some eggs or TP? Let us know and we will work to get you whatever you need.

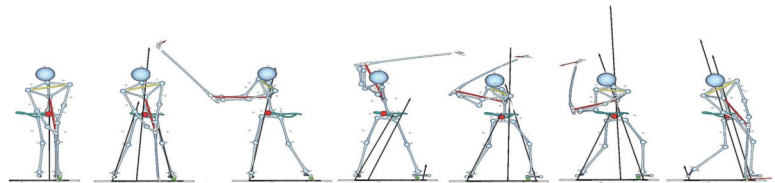
Your club is making every effort possible to keep your second home up and moving. While there are no social gatherings or golf events right now we can make life a little easier by offering take-out food and beverage orders and some home deliveries for those that don't need to get out during this time of caution.

This is a time for all of us to stand together and support one another. Reach out to a friend today and lift them up and let them know that yours and our support is a call away. This club is a part of us all. Let's take care of each other during good and bad times.

Contact: Stan Reeder, Sales and Marketing Director

361-450-4393

**"GOLF IS THE CLOSEST  
GAME TO THE GAME  
WE CALL LIFE. YOU  
GET BAD BREAKS  
FROM GOOD SHOTS;  
YOU GET GOOD  
BREAKS FROM BAD  
SHOTS - BUT YOU  
HAVE TO PLAY THE  
BALL WHERE IT LIES. "**  
-BOBBY JONES



## Special Events & Banquets~ Karen Hernandez

Special Events and Banquets are on hold until further notice.

We will be back to planning specialty nights and many more activities for our Members and Guests soon.

Stay Safe!

Contact: Karen Hernandez , Event Coordinator  
361-729-8324



what is a golf club's  
favorite type of music?



swing

[khernandez@rockportcc.com](mailto:khernandez@rockportcc.com)

# **Playing golf while social distancing?**

## **Here's what you need to know**

**What should a player do throughout the round?**

Hand-sanitizing and hand washing should be as welcomed as hitting the fairway off the tee. As you go through the game, wash your hands with soap and water for at least 20 seconds when you're able to, or alternatively use hand sanitizer liberally. If you have contaminated hands, we don't want you touching your mouth or face. We don't want you to get the virus on your hands. At tee boxes, fairways and greens, practice "social distancing" with groups outside of your own — about 6 feet.

**1. How should you handle your golf clubs?**

Players should wipe down the parts of the club that touch the golf cart, along with the parts of the bag. You should wipe down the edges of the bag, the handle of the club, the parts that touch the golf cart

**2. How should you handle your golf balls?**

Use of hand sanitizer and hand washing should again be as welcomed as picking up your ball from the cup after a birdie. But maybe let that Pro V1 you found in the woods go this time.

**3. How should you handle your golf glove?**

Hand sanitizer for your glove, too, though not ideal, as it will create some slickness. If you're willing to put it on your glove, use it. It's the safest avenue. Something to keep your glove clean is ideal.

**4. How should you handle the golf cart?**

Wipe the steering wheel and seat and minimize the risk of other people who have used the cart.

**5. How should you handle your cellphone during the round?**

Maybe wait till you're home, but if you do have to check it keep it somewhere where it's not put directly on the dashboard of the cart. While using the phone, try to keep it on one person. If you have a phone that can be wiped down, that's great. At a minimum, you should be thinking of hygiene. Just use common sense.



## 6. How should you handle the clubhouse?

Get in, get out and keep your distance. Social distancing is increasingly advised to slow the spread of infection, Sit outdoors with that 6-foot radius from others, if possible. Again, wash your hands or use hand sanitizer after touching any high-touch areas.

## 7. How should you handle playing partners?

If you're playing with friends and family, check that they're feeling well. If you're playing with strangers, keep your social distance. If you're playing with the friendly types, words speak louder than actions this time. In general, don't shake hands and do something else, like an elbow bump, as elbows are not high-contaminated areas, Do welcome your playing partners and say congrats. Just find different ways than a handshake to express gratitude.

Information pulled from Golf and the coronavirus: how to play with confidence, according to an expert , By [Nick Piastowski](#)



## Dining~ Chef Gordon

Thank you for your continued support as we go thru limited times of service on a day to day basis.

We strive to give you the best possible service as you are accustomed to. We are featuring daily specials as a well as fresh made desserts.

From the moment your order is place we have always and continue to take the utmost precautions when preparing your order. The kitchen staff is trained in food prep and safety. We take this job very seriously. With the recent events we have had to cut back on our staff, but let me assure you that we do not cut back on our procedures to keep our kitchen sanitized and to ensure our staff are preparing your meals in a safe manner. We hope to be back to normal dining soon. We can not say Thank You enough for your continued support. Follow us on Facebook for daily specials and any changes to the Menu.



Contact:  
Chef Gordon  
Executive Chef

361-450-4397

[chefgordon@rockportcc.com](mailto:chefgordon@rockportcc.com)

## Dining To Go~ Beverly Dickson

Copper Dining Room To Go Lunch and Dinner.

We are still here to provide you with fresh and delicious take out. Please, when picking up your food, Do Not enter the front entrance, dining room, or bar area. Instead, wait in your car or at the door and we will be out to greet you and get your order. This is for the safety of everyone.

For To GO Orders call 361-729-8324 # 2 or the Copper Room bar directly at 361-729-4390

We do our best to make sure your ticket matches your member number. Please DO NOT sign a ticket that does not show your correct name and member number.

We are looking forward to getting on the other side of this and back to Social time at the Club. We sure do miss our Members, servers, bartenders and staff. We will all be back together soon. For now take care of yourself and your families. Have a Safe and Happy April...



Contact:  
Beverly Dickson  
Administrative Assistant  
Concierge  
361-450-4980  
[bdickson@rockportcc.com](mailto:bdickson@rockportcc.com)

## Questions about your Statement~ Diane Hipp



**Reminder to always check your receipt when making purchases. Your name and member number should always match.**

Take a moment to double check. log into the website at [Rockportcc.com](http://Rockportcc.com) to view your statement. You can also upload our mobile app to view your statements. Any adjustments are made at the end of each month.

If you have any questions

**Contact Diane**

Contact:  
Diane Hipp  
Director of Finance &  
Operations  
361-729-8324  
[dhipp@rockportcc.com](mailto:dhipp@rockportcc.com)





# April 2020

Reservations 361-729.8324 #2



WiFi  
Guest Password :  
TheRock8324

| Sun | Mon                                                   | Tue                                                   | Wed | Thu | Fri | Sat |
|-----|-------------------------------------------------------|-------------------------------------------------------|-----|-----|-----|-----|
|     |                                                       |                                                       | 1   | 2   | 3   | 4   |
| 5   | 6<br>CLOSED                                           | 7                                                     | 8   | 9   | 10  | 11  |
| 12  | 13<br>CLOSED                                          | 14                                                    | 15  | 16  | 17  | 18  |
| 19  | 20<br>CLOSED                                          | 21                                                    | 22  | 23  | 24  | 25  |
| 26  | 27<br>CLOSED<br>Golf Course Closed<br>Greens Aeration | 28<br>CLOSED<br>Golf Course Closed<br>Greens Aeration | 29  | 30  |     |     |