



The Rock Newsletter

Message from President~ Craig Bohn



I wanted to take a moment and share several things that were discussed in our most recent board meeting. First is how much enjoyment the members are getting from our facilities. All the improvements from storm damage have made our club truly beautiful. It is a great place to be sheltering from the virus.

We are blessed to have a talented general manager and support staff. They have done a splendid job meeting and surpassing all the challenges of the lock down. And this has been done while maintaining the financial integrity of our club. All the wonderful improvements necessitated taking on additional debt yet we have been able to meet and exceed the budget so far this year which allowed us to support our payments without depleting our cash position. I can't say enough about our managers performance to make this possible.

We also discussed the importance of maintaining our club so that it will continue to provide the level of enjoyment we have come to expect. We also approved several capital expenditures to support our course and continue its improvement. Although we have come a long way, we still have numerous tasks to accomplish. We discussed the importance of continued capital expenditures to sustain the quality of our club experience. There are numerous items that will be coming in the near future and we are doing our due diligence to make sure the right things happen and happen appropriately.



With your help we look to finish 2020 strong and a great 2021.
Thanks to each of you for your continued support of RCC.



Message from the GM~ Rick DeLoach

October is now behind us and the Holiday Season is quickly approaching. Many of you have asked about Thanksgiving and will the club be offering a Thanksgiving Lunch. The short answer is yes and for those of you that would like it TO GO, that option will be available as well.

The current plan is to offer a Thanksgiving Buffet (served by the staff) from 11:00 AM – 2:00 PM on Thanksgiving Day. Reservations are now being taken by Beverly and while we must work within state and local guidelines we will ask that reservations not exceed more than ten people and if a reservation is larger than six, they must all be family members.

We are in the process of finalizing the menu for the day but you can expect a full selection of Thanksgiving goodies for both dine in and TO GO. As a reminder to all, this event will sell out so make your reservations early.

We are also planning our Annual Member Christmas Come and Go event on December 18th and 19th as well as a New Year's Eve Party on the 31st of December. Mark your calendars now to join your friends at the club for these special events.

As always, thank you for your continued support through some difficult times. Let's all take the necessary steps to keep our club safe during this holiday season by applying all of the safety protocols such as face mask and maintaining social distancing.



Veterans Day

November 11th



THANK YOU TO OUR VETERANS.



Valor is stability, not of legs and arms,
but of courage and the soul.
- John F. Kennedy



Golf Operations~ Thane Emerson



Final preparations are being made for our November Golf Events. First on the list is the Ladies "Birdie Kup" November 7th & 8th which is always a spirited FourBall match play event with the Blue Heron team defending their title from last year over the Roseate Spoonbill's. We have already begun taking sign-ups for the Showdown at the Rock to be held November 14th & 15th. The Showdown is a men's match play event between the defending champion Outlaw team versus the Gunslinger team. December 7th we will host our 1st RCC Superintendent's Revenge Scramble which will be a benefit tournament to assist the golf course maintenance department in purchasing additional needed equipment. We encourage everyone to put a scramble team together and face the fun challenge of the golf course being set up as never seen before. Our Annual Turkey-Shoot Scramble will be held on Sunday, November 22nd.

For more information on any of these events or to sign up please call the Golf Shop
361-729-4182

We are fast approaching the end of the year and as a friendly reminder that all Golf Shop credit must be spent before December 31st. However, any credit issued in December will carry over into 2021.

HOLE-IN-ONE CLUB REMINDER!

The Golf Shop offers a Hole-in-One Club to our golfing Members that is FREE to join.

In the event one of the Members in the club makes a Hole-in-One with at least two witnesses each member is billed \$5. The total amount billed gets credited to the lucky person's credit book account in the golf shop. To sign up stop by or call the Golf Shop at 729-4182 and we will be happy to add your name to the club so when you hit that perfect (or lucky) shot, it will be even more rewarding.



Daylight Savings Time

Sunday November 1st

Set your Clocks BACK One Hour

Change the Batteries in your Smoke Detectors

Check the Pressure in your Fire Extinguishers



MGA~ President Jeff Hulse



The MGA held a 1-2-3 Low Net 3 Man Teams Tournament on Thursday, October 15th. We had 10 Teams of 3 Players. Each player teed off on each hole. The team would select which drive they would individually play from (except on Par 3's) and each player would play their own ball into the hole. On the Par 3's each player would play their own ball off the tee and into the hole. The team score was determined by counting the best net players score.

Par 5's- 1 Best Ball Net

Par 4's-2 Best Ball Net

Par 3's- 3 Best Ball Net



We also played a Yellow Ball Net Score Tournament within the 1-2-3 Net Tournament. Each player would take turns playing the yellow ball keeping the same order. The players Yellow Ball Net Tournament Score was recorded separate than the 1-2-3 Net Score Tournament. If the yellow ball was lost that team was out of that Competition.

1-2-3 Tournament Results:

1st Place - Score of 126

Paul Gerhard
John Landry
Ed Patterson

2nd Place - Score of 131

Buddy Davison
Mike Whitney
Dick Yeager

Yellow Ball Tournament results:

1st Place - Score of 65

Mike Couvillion
Keith Gibson
John Williams

The MGA held a Select Drive 2 Low Net Tournament on October 24th. (1 A&D score and 1 B&C score). Each team had to use a minimum of two drives per player during the round. One drive on holes 1-9 and one drive on holes 10-18. We had 7 four man teams / 28 participants. Results below:



1st Place-Score of 114

Tiebreak score of 6 on #10

Scott Bibeau
Bruce Hood
Lee Sandell
Ron Watson



2nd Place-Score of 114

Tiebreak score of 8 on #10

Mike Couvillion
Michael Hord
Jim Valenti
Ron Watson

Thank You to all our MGA members who participated.

The November MGA Tournament dates are Thurs, November 5th and Sat, November 28th. Both events are 9:00am shotgun start times. Information will be sent out in an email from our golf pro Thane Emerson and there will be a sign-up sheet for the event in the Pro Shop. Our Men's Golf Association would like to welcome our new members to our RCC family. If you have an interest in joining the MGA please contact MGA President Jeff Hulse or our Golf Pro Thane Emerson to sign up.

Let's take care of our course. Please remember to fill your fairway divots with sand and repair your ball marks on the greens.



RCCLA~ Aida 'DeDe' Valenti

Dear RCCLA Members

Our weather has cooled off; everyone seems to have a completely wonderful outlook!

As you know, the pandemic affected the Sept and Oct RCCLA Luncheon/Meetings which had to be cancelled.

The board is happy to announce the November RCCLA Luncheon, will happen, rain or shine! (I best not get too cocky)

'Love the Pearls' is returning. They were here January of 2019 and we had a wonderful turn out.

Make your reservation for Friday November 13th. Arrival time is 10:30 AM. (See the attached flyer)

There will be limited seating as we are required to use social distancing. Wearing of masks is mandatory upon entering the Club House and once you leave the table.

Hope to see everyone on Friday the 13th of November!



RCCLA

ROCKPORT COUNTRY CLUB LADIES ASSOCIATION

PRESENTS 'LOVE THE PEARLS'



Friday, November 13th

Pearl Gift for Attendees, Pearl Prizes & Pearl Shopping

Our guest speaker is a global pearl producer who will deliver an entertaining informative, and fun new presentation about the Wonderful World of Pearls. Enjoy Shopping the world's largest collection of pearl jewelry designs at incredible savings direct from the producer.



This is a great time for early Holiday shopping!

Arrival Time is 10:30 AM - Program & Shopping 11AM to 12

Lunch at Noon - \$17.00 Per Person Inclusive

*** Limited Seating Due to the Pandemic**

RSVP to Beverly Dickson at bdickson@rockportcc.com

or 361-729-7324 - Ext. 2 By Nov. 05, 2020

Masks Required

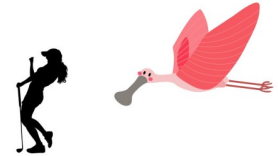




Fun filled Blue and Pink rivalry is quite evident as the Roseate Spoonbills square off with the Blue Herons at the Birdie Kup Match Play Tournament on November 7 & 8. Much appreciation to Laura Wilson, Chair and Ann Barkley, Co-Chair for organizing this popular event. Cheers to our Team Captains, Retta White and Eunice Hellums (Roseate Spoonbills) and Elaine Davis and Shelley Gatlin (Blue Herons) for their efforts putting the teams together. And finally, thank you Kay Kubelka for graciously offering her home to host the pre-event cocktail party. The LGA would like to welcome our latest new member, Beverly Robinson. If others are interested in joining, we have membership forms in the Golf Shop. October's Golfer of the Month is Shelley Gatlin. Shelley had a clean sweep this fall with winning the Ladies Club Championship and now Golfer of the month. Way to go Shelley!



LGA Birdie Kup
November 7th & 8th
The Rosette Spoonbills
vs
The Blue Herons



Ladies Nine Hole Golf – “The Niners”

Ladies if you are interested in a nine hole non-competitive round of golf RCC has what you are looking for. The Niner's, as they call themselves, play on-ly nine holes with a primary focus on just having fun and making new friends.

If you are interested please contact Barbs Meader at 361.205.6606 or Jeanne Arnold at 512.585.4019.

Course Update~ Derick Hashimoto

October was a good month for Golf Course Maintenance, we were able to get all the tees except for the tees that have zoysia overseed with ryegrass. This will give us a good playing surface all winter long. The maintenance team has been hard at work on hole 1,6 and 9 removing the material that was bad and add fresh new material with paspalum sod from hole 9 and the chipping greens. This will allow a grass that is more salt tolerant to help fight the issues that these fairways tend to have.

The chipping green had some damage done to it last month and we were able to get some insurance to re sod the entire green. Because of the time of year and the less growing time we have we have decided to overseed the chipping green for the winter and will come back and do the resoding work in the spring.

We will also continue to work on these high focus areas.

- Removal of the St. Augustine grass from the playing areas. This will be a slow process before it is all gone but we are working towards that goal.
- Continue to work on the weak turf areas on the greens, tees and fairways. These areas are getting a heavy dose of fertilizer to assist the process.
- We will continue to manage traffic control ropes in the playing area to assist with the grow in.

Finally, we need your help in assisting us with cart traffic. With the single cart use program, we are seeing more areas on the course showing signs of the additional cart traffic. PLEASE avoid weak areas and PLEASE observe all cart rules throughout the course.





PRO SHOP

Friendly Reminder

All Member Credit Book Must be Redeemed
Prior To
December 31st, 2020



Rockport Country Club



Rockport Country Club



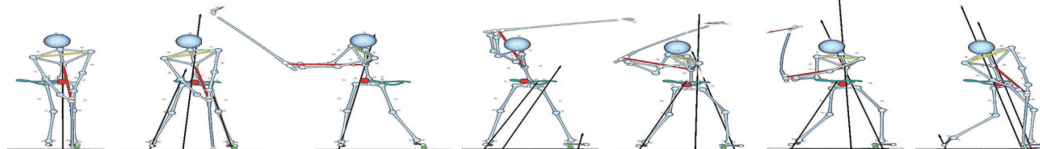
Rockport Country Club



Rockport Country Club

~ Player Development ~

Sign up in the Pro Shop



November
Sat Nov 7th
Sat Nov 14th
Sat Nov 21st
Sat Nov 28th



Congratulations!

Jack Wright aced Hole #12 with an 8 iron from 117 yards.
Witnessed by Jeff Hunt and Jim Valenti.

RCC Couples Tournament Results

October 17, 2020

| First Flight | | Score |
|-----------------------|-------------------------------|-------|
| 1 st Place | John & Cynthia Bryson | 62 |
| 2 nd Place | Jason Gordon & Shelley Gatlin | 65 |
| 3 rd Place | Jeff & Bilinda Hulse | 65 |
| Second Flight | | |
| Score | | |
| 1 st Place | Chuck & Jan Schwing | 63 |
| 2 nd Place | Chuck & Beverly Robinson | 67 |
| 3 rd Place | David & Laura Wilson | 70 |



2020 RCC CLUB CHAMPIONSHIP

OCTOBER 3RD & 4TH

MENS CLUB CHAMPIONSHIP RESULTS



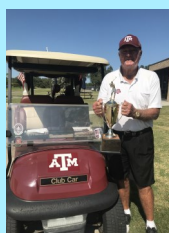
| | | |
|-----------------------|--------------|-----------|
| Club Champion | Bill Woodley | 78-78=156 |
| 2 nd Place | Pat Vrba | 80-84=164 |
| 3 rd Place | Luke Wester | 85-82=167 |

| | | |
|---------------------------|--------------|-----------|
| 1 st Place Net | John Schwarz | 71-72=143 |
|---------------------------|--------------|-----------|



| | | |
|---------------------------|--------------|-----------|
| White Tee Champion | Dan Holitzke | 72-77=149 |
|---------------------------|--------------|-----------|

| | | |
|---------------------------|---------------|-----------|
| 1 st Place Net | Chuck Schwing | 78-76=154 |
|---------------------------|---------------|-----------|



| | | |
|-----------------------------|--------------------------------------|------------|
| Senior Club Champion | Tommy Wright | 77-82=159* |
| | Fred Kahn | 83-76=159 |
| | *Won Sudden Death Playoff on Hole #1 | |
| 3 rd Place | Ed Patterson | 78-84=162 |

| | | |
|---------------------------|-----------|-----------|
| 1 st Place Net | Fred Kahn | 78-71=149 |
|---------------------------|-----------|-----------|

| | | |
|---------------------------|------------|-----------|
| 2 nd Place Net | Craig Bohn | 79-75=154 |
|---------------------------|------------|-----------|

SENIOR 2ND FLIGHT

| | | |
|-----------------------|-------------|-----------|
| 1 ST Place | Jack Wright | 85-89=174 |
|-----------------------|-------------|-----------|

| | | |
|-----------------------|-------------|-----------|
| 2 nd Place | Dick Yeager | 86-91=177 |
|-----------------------|-------------|-----------|

| | | |
|---------------------------|---------------|-----------|
| 1 st Place Net | Frank Shumate | 68-76=144 |
|---------------------------|---------------|-----------|

| | | |
|---------------------------|-------------|-----------|
| 2 nd Place Net | Gary Clouse | 76-76=152 |
|---------------------------|-------------|-----------|

LADIES CLUB CHAMPIONSHIP RESULTS



| | | |
|----------------------|---------------|-----------|
| Club Champion | Shelly Gatlin | 93-91=184 |
|----------------------|---------------|-----------|

| | | | |
|------------------------|-----------|--------------|-----------|
| 1 ST Flight | Low Gross | Elaine Davis | 95-93=188 |
|------------------------|-----------|--------------|-----------|

| | | | |
|--|---------|----------------|-----------|
| | Low Net | Tina Atteberry | 74-82=146 |
|--|---------|----------------|-----------|

| | | | |
|------------------------|-----------|-------------------|-----------|
| 2 nd Flight | Low Gross | Charlotte Sherman | 92-95=187 |
|------------------------|-----------|-------------------|-----------|

| | | | |
|--|---------|------------|-----------|
| | Low Net | Elyce Kahn | 71-69=140 |
|--|---------|------------|-----------|

| | | |
|-----------------------------|------------------|-----------|
| Senior Club Champion | Shirley Hartnett | 95-91=186 |
|-----------------------------|------------------|-----------|

| | | |
|---------------------|------------|-----------|
| 1 ST Net | Linda Bohn | 68-78=142 |
|---------------------|------------|-----------|



Membership Update

Giving Thanks for all our New Members this Year!

Have a blessed Thanksgiving!

Sandra Richard & Mary Lessor

Marita Groenhuyzen

Brian Rutledge

Harry & Betsy Johns

Barry Sieh

Dan and Marie Guarino

Mike, Stephanie and Michael Horvath

Melbourne and Dickie O'Banion



Membership
Contact: Chris DeLoach
361-450-4393

cdeloach@rockportcc.com

We will be participating in **Shop Small on Saturday, November 28th, 9am to 4pm.**

If you shop small you have a chance to win raffle prizes.

Welcome station is Goin' Coastal Outfitters to pick up map and Ending Location is The Dockside Trading Company.

Collect Round About Cards throughout the day. 1 Card for visit and 2nd card if you make a purchase.

Turn in cards by 4pm at Ending location for chance to win prizes.

You do not have to be present to win.

Special Events & Banquets~ Karen Hernandez

Tis The Season for Parties and Get Togethers.
Hosting a Private Gathering at Your Home?

Let us do all the planning for you.

Contact:
Karen Hernandez
Event Coordinator
361-729-8324

khernandez@rockportcc.com





Rockport Country Club

Presents

“Showdown At The Rock”

Saturday & Sunday November 14th & 15th

Format: Match Play

Team: “Outlaws”

vs

Team: “Gunslingers”

Team Member Selection: Thursday November 12th 5:30pm At The Clubhouse

*** 9:00AM Shotgun Each Day ***

Saturday November 14th

Holes 1-6 Scramble

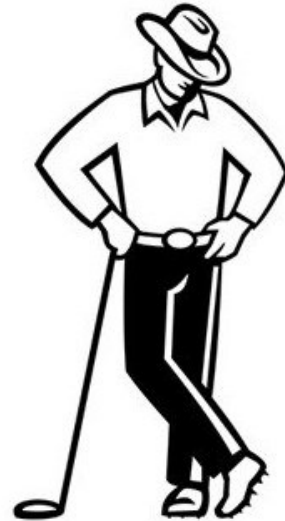
Holes 7-12 Alternate Shot

Holes 13-18 One Best Ball Net

Each Match Worth 1 Point

Sunday November 15th

Single Matches



Entry Fee \$50.00 Per Player

Includes: Lunch Each Day & Beverages During Play

Entry Deadline: Wednesday November 11th by 5:00PM

For Additional Information and to Sign Up

Contact The Pro Shop 361-729-4182

Rockport Country Club

Presents

Thanksgiving Day Buffet

November 26th

11am ~ 2pm

Adults \$28.95

Children 6 to 12yrs \$14.95

Children Under 5yrs Eat for Free

Menu

**Herb & Butter Roasted Turkey, Giblet Gravy
Honey Baked Ham with Honey Bourbon Sauce
Crab Stuffed Flounder with Lemon Butter Sauce**

~Sides~

Mixed Greens Salad, Waldorf Salad, Deviled Eggs, Charcuterie

Mashed Potatoes, Green Bean Casserole

Chardonnay Glazed Carrots, Cranberry Sauce

Cornbread Dressing, Sweet Potato Soufflé, Rolls

~Desserts~

Pecan Pie, Pumpkin Pie, Chocolate Cake & Assorted Cheesecakes

TO GO PLATES

Turkey or Ham, Mashed Potatoes & Giblet Gravy

Cornbread Dressing, Cranberry Sauce,

Green Bean Casserole, Rolls, Chefs Choice Dessert \$19.95

ALL To Go Orders Must Be Placed by November 23rd

Reservations Required for Dine in & Curbside Pickup

361-729-8324 # 2 bdickson@rockportcc.com

Dining~ Chef Gordon



Contact:
Chef Gordon
Executive Chef

361-450-4397

chefgordon@rockportcc.com

CHEF GORDONS WEEKLY SPECIALS

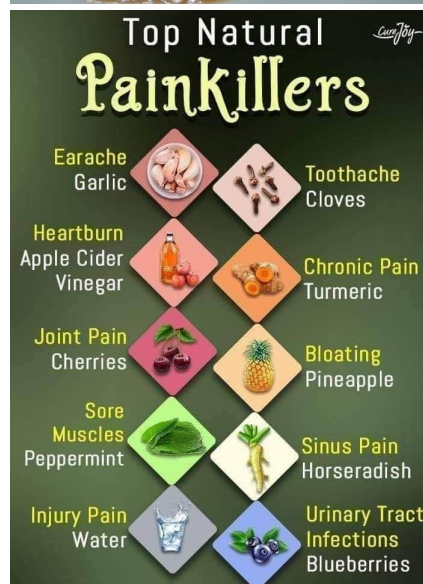
Thursdays, Fridays & Saturdays

5pm—Close or Until Sold Out

Greeting from the Kitchen Staff.

Another Month of Sell Out Weekly Specials. We are so Thankful for your continued support. Ask you server about our New House Made Onion Rings and Cheese Sticks. Take a look at the Calendar for this Month and don't forget to make your Reservations for Thanksgiving Day Dinner.

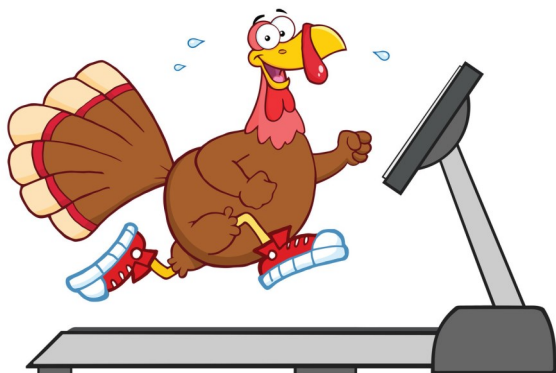
We will be preparing a Traditional Thanksgiving Feast with all your favorite sides.



FITNESS CENTER

Thank You to ALL of those that have followed the State and Local Guidelines when using the Fitness Center.

Do Not Forget to sign in your Guests.



Reservationist ~ Beverly Dickson



Contact:
Beverly Dickson
Administrative Assistant
Concierge
361-450-4980
bdickson@rockportcc.com



Copper Room Dining Reservations and Curbside Pick Up

Sunday Brunch — No Curbside or To Go. Dine in Only 10am-2pm

Monday — Closed

Tuesday — Dine in 11am-3pm * Curbside 11am-3pm Only

Kitchen Closes at 3pm * Copper Room Bar 11am-6pm

Wednesday — Dine in 11am-3pm Only. Curbside 11am-6pm Order must be place by 5:30pm. Pick Up no later than 6pm * Copper Room Bar 11am-6pm

Thursday — Dine in 11am-7:45pm. Curbside 11am-7pm Order must be placed by 5:30pm * Copper Room Bar 11am-8pm

Friday — Dine in 11am-7:45pm. Curbside 11am-7pm Order must be placed by 5:30pm * Copper Room Bar 11am-8pm

Saturday — Dine in 11am-7:45pm. Curbside 11am-7pm Order must be placed by 5:30pm * Copper Room Bar 11am-6pm

To Make your Reservation or to Place your To Go Curbside Pick up Please contact

361-729-8324 # 2 ~ bdickson@rockportcc.com



Curbside Pick Up & Delivery

Let us Do the Cooking for You.

Delicious Weekly Specials & All of Your Favorite Menu Items.

Place Your Order and Drive Up to the Front Entrance. We will bring it out to your vehicle.

Delivery Within the Country Club Estates Thursday—Saturday

Questions about your Statement~ Diane Hipp



Reminder to always check your receipt when making purchases. Your name and member number should always match.

Take a moment to double check. log into the website at Rockportcc.com to view your statement. You can also upload our mobile app to view your statements. Any adjustments are made at the end of each month.

If you have any questions

Contact Diane

Contact:
Diane Hipp

Director of Finance &
Operations

361-729-8324

dhipp@rockportcc.com



November 2020 Dining



Reservations 361-729.8324 #2
bdickson@rockportcc.com



WiFi
Guest Password :
TheRock8324

| Sun | Mon | Tue | Wed | Thu | Fri | Sat |
|---|----------------------------|---|---|--|---|--|
| 1 Set Your Clocks Back Sunday Brunch 10am—2pm | 2 CLOSED | 3 | 4 Dining Hours Lunch 11am-3pm Only Dinner 4pm-6pm Curbside Only Copper Room Bar 11am-6pm | 5 Chef Gordons Weekly Special 5pm -close Thursday—Saturday | 6 Home Style Meat Loaf Pot Roast Pork Chop | 7 Chef Gordons Weekly Special 5pm -close Thursday—Saturday |
| 8 Sunday Brunch 10am—2pm | 9 CLOSED | 10 Dining Hours Lunch 11am-3pm Only Copper Room Bar 11am-6pm | 11 | 12 Chef Gordons Weekly Special 5pm -close Thursday—Saturday | 13 Surf & Turf Filet & Scallops | 14 Chef Gordons Weekly Special 5pm -close Thursday—Saturday |
| 15 Sunday Brunch 10am—2pm | 16 CLOSED | 17 Dining Hours Lunch 11am-3pm Only Copper Room Bar 11am-6pm | 18 Dining Hours Lunch 11am-3pm Only Dinner 4pm-6pm Curbside Only Copper Room Bar 11am-6pm | 19 Fried Chicken Buffet is BACK Limited Seating | 20 Chefs Choice TBA | 21 Chef Gordons Weekly Special 5pm -close Thursday—Saturday |
| 22 Sunday Brunch 10am—2pm | 23 CLOSED | 24 Dining Hours Lunch 11am-3pm Only Copper Room Bar 11am-6pm | 25 Dining Hours Lunch 11am-3pm Only Dinner 4pm-6pm Curbside Only Copper Room Bar 11am-6pm | 26 Thanksgiving Day Buffet | 27 Chefs Choice TBA | 28 Chef Gordons Weekly Special 5pm -close Thursday—Saturday |
| 29 Sunday Brunch 10am—2pm | 30 CLOSED | | | Curbside Pick up ALL To Go Orders Must Be Placed NO Later than 5:30pm | | |



November 2020 Golf

361-729.8324



WiFi
Guest Password :
TheRock8324

Sun

Mon

Tue

Wed

Thu

Fri

Sat

| | | | | | | |
|---|------------------|--|---|------------------------------------|------------------------------------|---|
| 1 Set Your Clocks Back | 2 CLOSED | 3 ELECTION DAY | 4 LGA~9am | 5 MGA Tournament 9am Shotgun | 6 | 7 Ladies Birdie Kup Match Play Player Development Clinic 10:00 - 11:00 AM at Driving Range |
| 8 Ladies Birdie Kup Match Play | 9 CLOSED | 10 | 11 VETERANS DAY THANK YOU FOR YOUR SERVICE LGA~9am | 12 | 13 | 14 Showdown At The ROCK Match Play Player Development Clinic 10:00 - 11:00 AM at Driving Range |
| 15 Showdown At The ROCK Match Play | 16 CLOSED | 17 Gulf Coast Superintendents Assn 8:30am Shotgun | 18 LGA~9am | 19 | 20 | 21 MGA/LGA Tournament 9am Shotgun Player Development Clinic 10:00 - 11:00 AM at Driving Range |
| 22 Turkey Shoot Scramble 12:30 Shotgun | 23 CLOSED | 24 A good golfer never really respects of his golf game. | 25 LGA~9am | 26 Happy Thanksgiving | 27 | 28 LGA Play Day Player Development Clinic 10:00 - 11:00 AM at Driving Range |
| 29 | 30 CLOSED | | | | "It's going to be a long day!" | |