




R O A M F R E E

EXCLUSIVE MEMBERSHIP PACKAGES

---




---

You aspire to be more, make more, golf more,  
hunt more; you enjoy luxury but not at the expense of  
comfort; you crave meaningful connections with friends,  
colleagues and nature. As in rugged land, lavish fairways  
and vivid sunsets. We know just the place.

Welcome to Dismal River Club, your retreat from  
everyday life. Nestled among the Sandhills of western  
Nebraska, we boast a mix of sporting, lodging and dining  
that's both rustic and refined, fascinating avid golfers,  
big game hunters and outdoor enthusiasts. Like you.

---



---

# Dismal River

Welcome to Dismal River! Our world class club offers the perfect escape from everyday life. Connect and reconnect with friends and colleagues in all that nature has to offer; and most importantly, make yourself at home.

Revered for our golf, hunting and outdoor excursions, our Red and White courses are designed by world-renowned architects Jack Nicklaus and Tom Doak, offering a diversity of play, and our professional guides boast more than 17 hunting and fishing experiences. Not to mention, there's a number of recreational activities including hiking, horseback riding, canoeing, kayaking and mountain biking. Enjoy a drink poolside or unwind in our full service spa.

As for membership, we feature a variety of packages - and one that is perfect for you. We're sure of it. Please take a moment to browse through all we have to offer. You'll fall in love.

Looking forward to seeing you out there,



Joel Jacobs  
CEO



**THE COURSE IS CALLING.** At Dismal River Club, we offer links golf at its purest level. Our championship-caliber courses feature fescue fairways, bent grass greens and tee boxes with sweeping views that promise to challenge and reward even the most seasoned golfer.







You'll find the ever-changing wind blows from every direction, influencing the contours of the bunkers and the selection of your golf club – a morning 9 iron may become an afternoon 5 iron. Every day is different.



As featured on: Golf Channel, ESPN, Golf Digest, LINKS Magazine, Golfweek, The Wall Street Journal, Omaha World-Herald



Designed by Jack Nicklaus, the White Course offers elevated championship tees with magnificent views in every direction. Playing at 7,353 yards from the tips, this Par 72 features 18 unique holes. Stop by Jack's Shack before tee-off or after your round for a delicious meal or refreshment.

"The experience of arriving at the Dismal River site was like stepping back in time and seeing what the dunes of Northeast Scotland must have looked like a hundred years ago. In every direction I looked, I saw great golf holes." ~ Jack Nicklaus



The Red Course was discovered and designed by world-renowned architect and friend, Tom Doak, and his team at Renaissance Golf Design. The 18th hole delivers breathtaking vistas of the clubhouse, cabins and 400-foot sand dunes overlooking the river itself. Playing at 6,994 yards from the tips, this Par 71 features 18 unique holes you won't soon forget.

"The best designs of all are organic, evolving from the subtleties of the ground they inhabit." ~ Tom Doak

Dismal River

**PLAY. EXPLORE. ESCAPE.**

**HUNT, FISH, RIDE AND HIKE ON THE WILD SIDE.**

Our 100,000-acre sportsman's paradise is filled with a wide variety of big game, upland birds and fish to keep you busy for months. Your trophy awaits.





Membership grants you exclusive access to our private hunting grounds with up to 17 guided hunting and fishing experiences. We also provide trained dogs, cleaning and packaging facilities as well as shotguns and shells if needed.

#### **BIG GAME**

Buffalo  
Trophy Mule Deer  
Whitetail Deer  
Predator Hunts

#### **BIRD**

Merriam's Turkey  
Pheasant  
Prairie Chicken | Grouse  
Chukar  
Quail  
Dove

#### **FISHING**

Bass  
Perch  
Crappie  
Trout



Looking to perfect your shot? Trap shooting, long-range shooting (up to 1 mile targets), five shooting stations and other skill training events are all included.

#### **SHOOTING**

- 1 Mile Long-Range Shooting Facility
- 5 Stand Sporting Clays (8 Stations)
- Trap Shooting
- Archery Range

#### **EXTRAS**

- Personalized Shooting Instructions
- Professional Guides | Trained Dogs
- Bird Cleaning and Packaging
- Variety of Guns Available For Rental
- Ammo Available for All Hunting and Shooting Activities



In addition to extraordinary hunting and fishing, we offer an array of outdoor excursions including horseback riding, canoeing, kayaking, hiking and mountain biking. Every excursion includes professional guides and equipment to ensure that you are fully immersed in the wilderness and, most importantly, return safe and secure.

#### **EXCURSION DETAILS**

- Horseback Riding
- Kayaking, Tubing and Tanking on the Dismal and Middle Loup Rivers
- Hiking
- Mountain Biking
- UTV Tours
- Photography
- Star Gazing
- Buffalo Tours

Dismal River

**PLAY. EXPLORE. ESCAPE.**



**WHERE BIG SKY MEETS BIG SCREEN.** Because every sporting enthusiast requires down time, we've designed our indoor amenities to rival the beauty of the outdoors. You'll find that our rugged yet lavish cabins, available as single, double or luxury-four bedroom, blend seamlessly into the scenery. Each room is designed with rustic, rough-hewn timber and furnished with TVs, Wi-Fi, cozy upholstery and amazing views.







Our expansive 27,000-sq. ft. lodge greets you with a fully stocked whiskey and cigar lounge, gaming tables handcrafted from restored barn wood and a fitness/weight room. There's also a three-screen theater room with leather recliners—*lots of leather recliners*—and an outdoor terrace complete with a fire pit perfect for taking in the stars.

Dining options are just as exquisite. Whether you're craving a delicious Hooker County steak (the best around), BBQ or wood-fired pizza, our outstanding chef will not disappoint. While Dismal River Club is designed for escape, we know that business still calls; we feature private meeting rooms, a mini business center and Wi-Fi to meet your needs.

#### CLUBHOUSE AMENITIES

- Outdoor Pool
- 10-Person Hot Tub
- Four-Season Whiskey and Cigar Patio
- Theatre Room
- Billiards and Card Room
- Full Service Spa
- Golf and Hunt Simulator
- Updated Fitness Center
- Family Room

#### Lodging Features:

- One, Two and Four-Bedroom Cabins with King Beds (XL available)
- Keurig
- Mini Fridge
- Premium Mattresses and Linens
- Flat Screen TVs
- Copper Walk-In Showers
- Wi-Fi

#### Dining Options:

- DRC - Fine Dining
- Buffalo Bill's Pub - Bar and Grill
- Jack Shack - On-Course Fare

#### Specialty Member Functions:

- Golfing and Hunting Tournaments
- Holiday Events
- Family Focused Events
- Tastings and Private Dinners

Dismal River

**PLAY. EXPLORE. ESCAPE.**



## RUSTIC RELAXATION

We all know wellness is the key ingredient to a balanced lifestyle. At Dismal River, you'll find all the amenities necessary to maintain your health and beauty. Whether it's working up a sweat in the fitness center or pampering yourself at the pool and Spa, you'll find it all here. After your workout, take a dip, get a massage and feel all your cares drift away.

Our full service Spa is staffed with professionals ready to spoil you with a multitude of services to choose from. Which will come in handy after a strenuous workout in our newly finished Fitness Center featuring numerous machines and weights aimed at keeping you in the best shape possible.

## The Spa at Dismal River Features:

### MASSAGES

Thai | Hot Stone | Rejuvenation | Deep Tissue

### MANICURES & PEDICURES

Mini | Signature | Deluxe | VIP

### SPECIALTY PEDICURES

Margarita | Napa Exfoliant | Hot Stone | Sports

### HERBAL CLASSES

Herb Balms | Herbal Teas | Herbs for Vitality and Sensuality

## Fitness Center:

State of the Art Endurance and Cardio Equipment

Full Free Weights Set

Variety of Cable and Resistance Machines

Dismal River

**PLAY. EXPLORE. ESCAPE.**

# Dismal River

## INDIVIDUAL CLUB MEMBERSHIP

You aspire to be more, make more, golf more, hunt more; you enjoy luxury but not at the expense of comfort; you crave meaningful connections with friends, colleagues and nature. As in rugged land, lavish fairways and vivid sunsets. We know just the place. Welcome to Dismal River Club, your retreat from everyday life. Nestled among the Sandhills of western Nebraska, we boast a mix of sporting, lodging and dining that's both rustic and refined, fascinating avid golfers, big game hunters and outdoor enthusiasts. Like you.

### CLUB MEMBERSHIP ACCESS

**INCLUDES** - Unlimited year round club privileges including golf, special member pricing on one of a kind upland bird hunting and access to big game hunting. Upland bird hunting and fishing are available to members following state guidelines. Member rates on lodging with priority access to hunts and in-season member events. All expenditures applied towards prepaid credit. Memberships are limited. Members have access to sporting clays, long range shooting, archery and fishing. All hunts must be guided.

## INDIVIDUAL CLUB MEMBERSHIPS RATES

(INCLUDES MEMBER, SPOUSE AND DEPENDANTS UNDER 25)

### MEMBERSHIP - 2020

Initiation Fee <sup>1</sup>	\$12,500
Initiation Fee (under 40) <sup>1</sup>	\$10,000
Prepaid Credit <sup>2</sup>	\$2,400
Annual Dues <sup>3</sup>	\$2,400
Total Annual Spend	\$4,800

**Plan your escape. Call (308) 546-2900 or email [membership@dismalriver.com](mailto:membership@dismalriver.com).**

1) Membership rates subject to change 2) Billed annually on January 1 3) Dues go towards member discounts, free golf





## CORPORATE CLUB MEMBERSHIPS

Whether you're building relationships on the course or hosting an off-site company retreat, we pride ourselves on providing the full experience to our corporate members, be it a five-star meal prepared by our Executive Chef; a round of golf on one of our nationally ranked courses, access to world-class hunting or taking in breathtaking, panoramic views of our unique slice of paradise. We offer a variety of ways to forge new partnerships, strengthen intercompany relationships and build your team's morale - or just relax and forget about work for awhile.

### CLUB MEMBERSHIP

**INCLUDES** - Unlimited year round club privileges including world-class golf, special member pricing on one of a kind upland bird hunting, and access to big game hunting. Upland bird hunting and fishing are available to members following state guidelines. Member rates on lodging with priority access to hunts and in-season member events. All expenditures applied towards prepaid credit. Memberships are limited. Members have access to sporting clays, long range shooting, archery and fishing.

\*Prepaid Club Credit can be shared amongst designees

---

## LARGE CORPORATE (INCLUDES 4 DESIGNEES)

### MEMBERSHIP - 2020

Initiation Fee <sup>1</sup>	\$40,000
Prepaid Credit <sup>2</sup>	\$8,000
Annual Prepaid <sup>3</sup>	\$8,000
Minimum Usage	\$16,000

---

## SMALL CORPORATE (INCLUDES 2 DESIGNEES)

### MEMBERSHIP - 2020


Initiation Fee <sup>1</sup>	\$20,000
Prepaid Credit <sup>2</sup>	\$4,500
Annual Dues <sup>3</sup>	\$4,500
Total Annual Spend	\$9,000

---

**Plan your escape. Call (308) 546-2900 or email [membership@dismalriver.com](mailto:membership@dismalriver.com).**

1) Membership rates subject to change 2) Billed annually on January 1 3) Dues go towards member discounts, free golf

---




---

“The experience of arriving at the Dismal River site was like stepping back in time and seeing what the dunes of Northeast Scotland must have looked like a hundred years ago. In every direction I looked, I saw great golf holes.”

— Jack Nicklaus

---



---

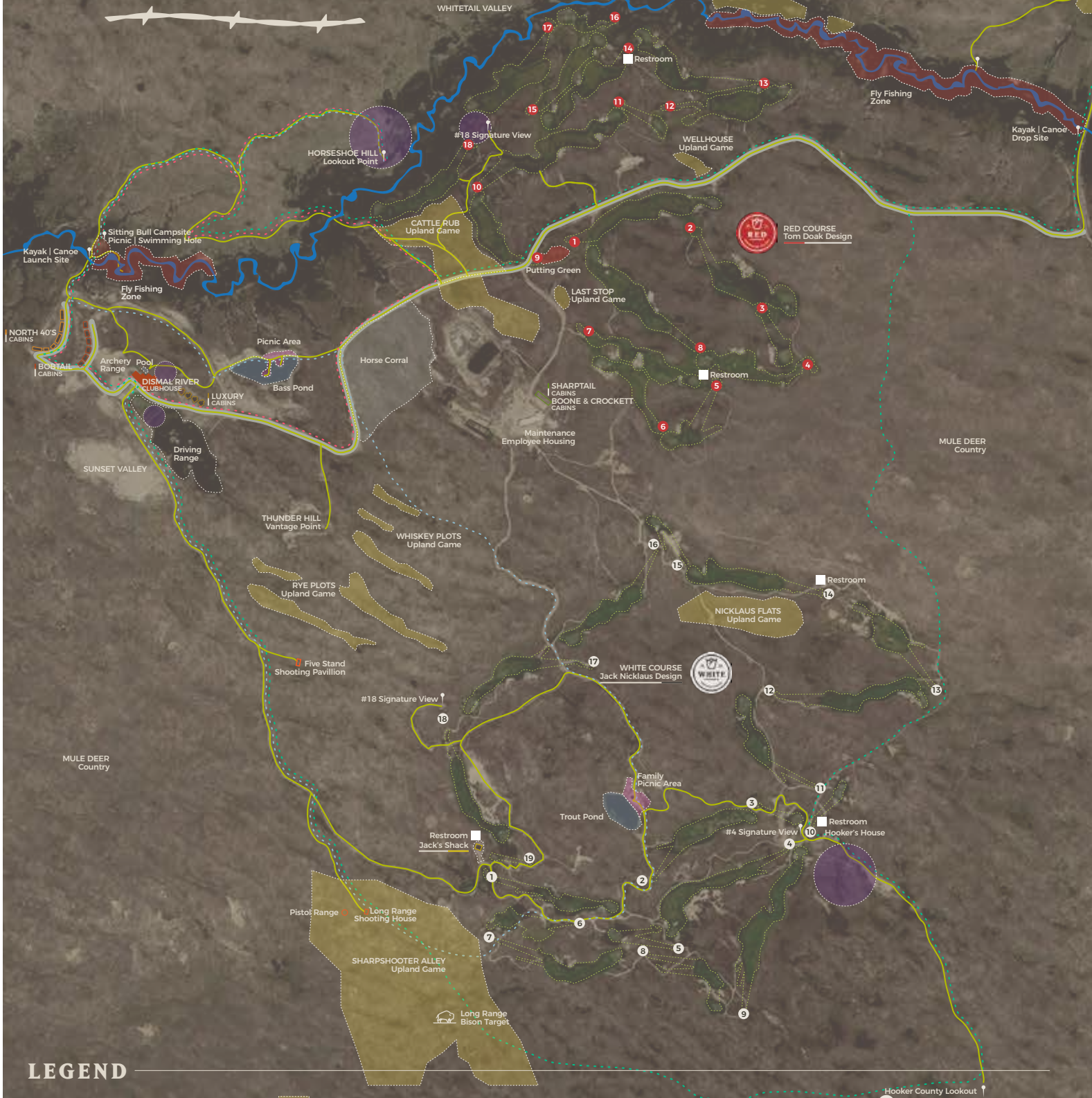
“The best designs of all are organic, evolving from the subtleties of the ground they inhabit.”

— Tom Doak

---



# Dismal River



## LEGEND

- UPLAND HUNTING (SEASON PERMIT)
- STARGAZING SPOTS
- FLY FISHING ZONE
- FISHING PONDS
- PICNIC AREAS

- ALL-ACCESS TRAILS (HIKING, BIKING, HORSE)
- HORSESHOE HILL UTV TOUR
- ACTIVITIES UTV TOUR
- HOOKER COUNTY UTV TOUR
- RESTROOMS

- WHITE COURSE HOLES TEE BOXES
- RED COURSE HOLES TEE BOXES
- COURSE GUIDE

1

1

1

1

1

1

1

1

1

1

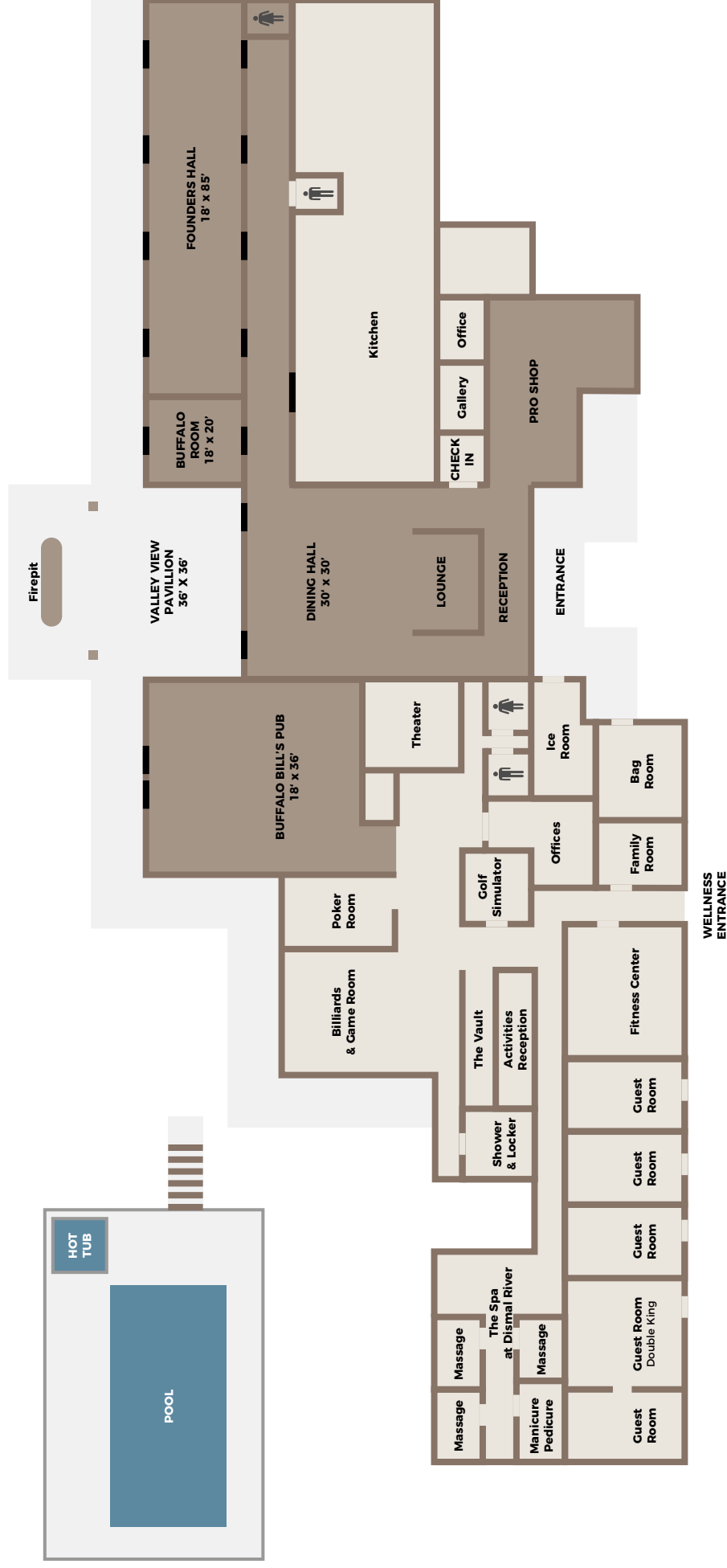
1

1



# Dismal River

## CLUBHOUSE MAP



Entertains up to 200 people | Private Rooms | Meeting Capabilities | Private Dining



# Dismal River

41.8525000 Latitude, -101.0379400 Longitude